

LOC/DME I-EUG 110.1 Chan 38	APP CRS 164°	Rwy Ldg 8009	TDZE 364	Apt Elev 374
--	------------------------	------------------------	--------------------	------------------------

ILS RWY 16R (SA CAT I)

MAHLON SWEET FLD (EUG)

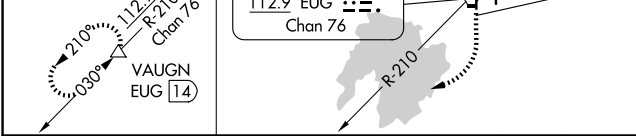
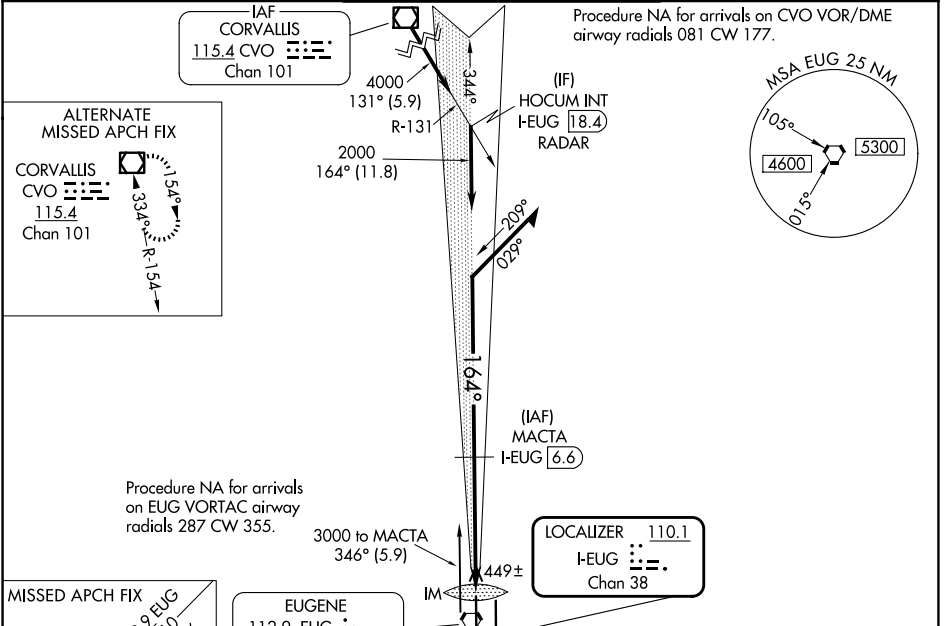
DME required.

Simultaneous approach authorized. Requires specific OPSPEC, MSPEC, or LOA approval and use of HUD to DH. SA Cat I minimums NA when control tower closed.

ALSIF-2

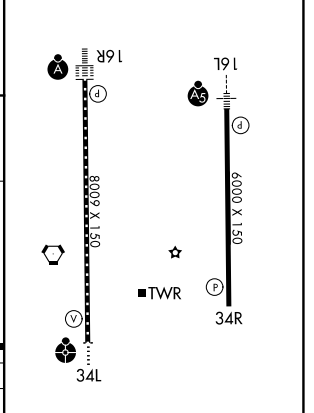
MISSED APPROACH: Climb to 1000 then climbing right turn to 5000 on heading 230° and on EUG VORTAC R-210 to VAUGN/EUG 14 DME and hold, continue climb-in-hold to 5000.

ATIS 125.225	CASCADE APP CON★ 119.6 348.7	EUGENE TOWER★ 118.9 (CTAF) 371.9 (16R/34L) 124.15 371.9 (16L/34R)	GND CON 121.7 269.5	UNICOM 122.95
------------------------	--	--	-------------------------------	-------------------------



MACTA I-EUG 116.6	1000	5000	VAUGN
6000	↑	hdg 230°	EUG R-210
2000	Use I-EUG DME when on localizer course.		

ELEV 374	TDZE 364
----------	----------



CATEGORY	A	B	C	D
S-ILS 16R	RA 164/14 150 DA 514			

SA CATEGORY I ILS - SPECIAL AIRCREW & AIRCRAFT CERTIFICATION REQUIRED

TDZL/RCLS Rwy 16R

REIL Rwy 34R

HIRL Rwy 16L-34R and 16R-34L

NW-1, 11 JUN 2026 to 09 JUL 2026

NW-1, 11 JUN 2026 to 09 JUL 2026