

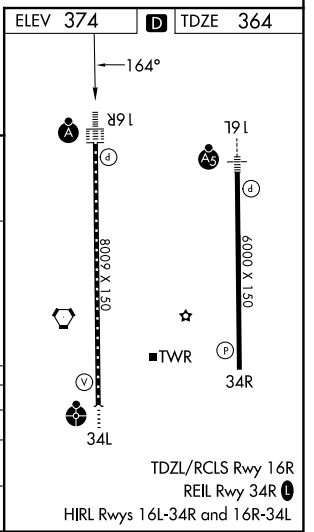
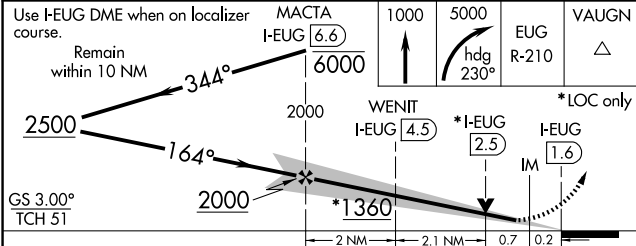
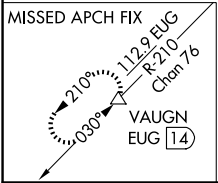
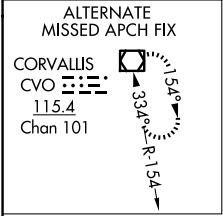
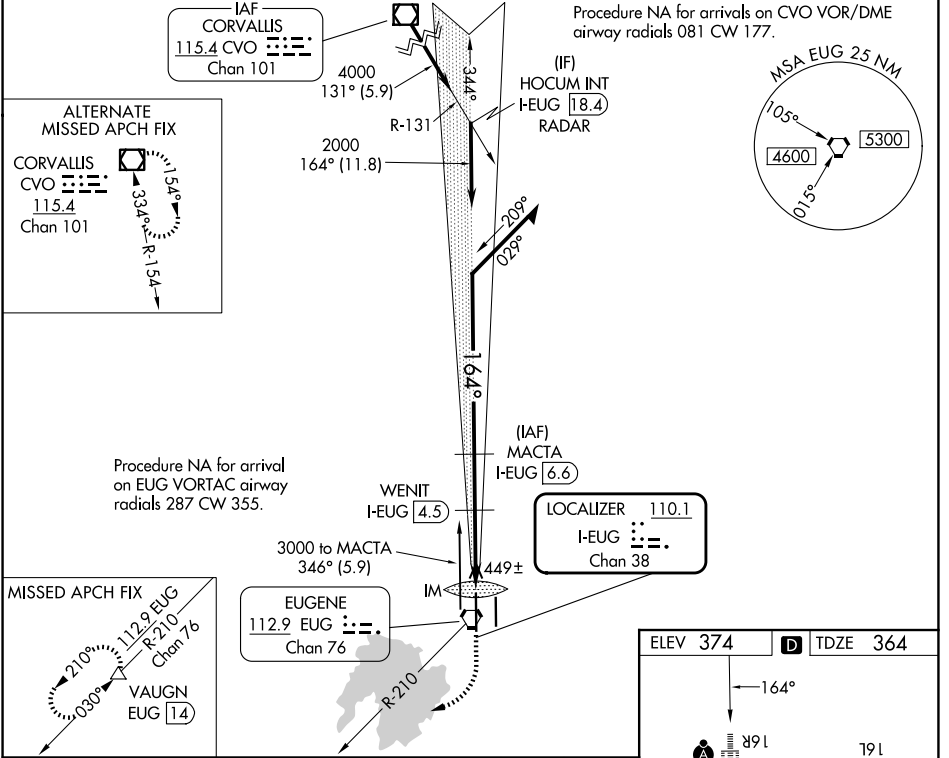
LOC/DME I-EUG <b>110.1</b> Chan 38	APP CRS <b>164°</b>	Rwy Ldg TDZE Apt Elev	<b>8009</b> <b>364</b> <b>374</b>
--	------------------------	-----------------------------	---

# ILS or LOC RWY 16R

MAHLON SWEET FLD (EUG)

DME required.	ALS-F-2	MISSED APPROACH: Climb to 1000 then climbing right turn to 5000 on heading 230° and on EUG VORTAC R-210 to VAUGN/EUG 14 DME and hold, continue climb-in-hold to 5000.
<p>Simultaneous approach authorized.</p>		

ATIS <b>125.225</b>	CASCADE APP CON★ <b>119.6 348.7</b>	EUGENE TOWER★ <b>118.9</b> (CTAF) <b>371.9</b> (16R/34L) <b>124.15 371.9</b> (16L/34R)	GND CON <b>121.7 269.5</b>	UNICOM <b>122.95</b>
------------------------	--	--	-------------------------------	-------------------------



Use I-EUG DME when on localizer course.	MACTA I-EUG 6.6	1000	5000	VAUGN
Remain within 10 NM	6000	↑	hdg 230°	△
2500	2000	WENIT I-EUG 4.5	*I-EUG 2.5	*LOC only
GS 3.00° TCH 51	2000	IM	I-EUG 1.6	
		2 NM	2.1 NM	0.7
				0.2

NW-1, 11 JUN 2026 to 09 JUL 2026

NW-1, 11 JUN 2026 to 09 JUL 2026