

# RNAV (RNP) Z RWY 16R

MAHLON SWEET FLD (EUG)

APP CRS	Rwy Ldg	<b>8009</b>
<b>164°</b>	TDZE	<b>364</b>
	Apt Elev	<b>374</b>

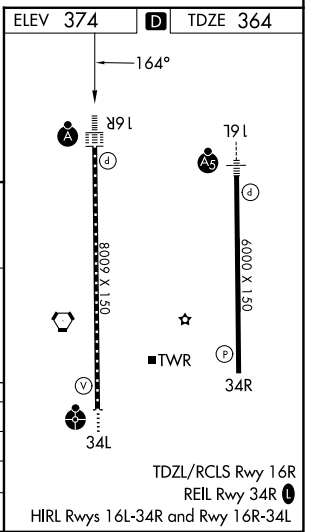
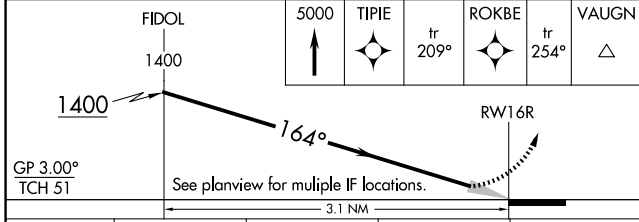
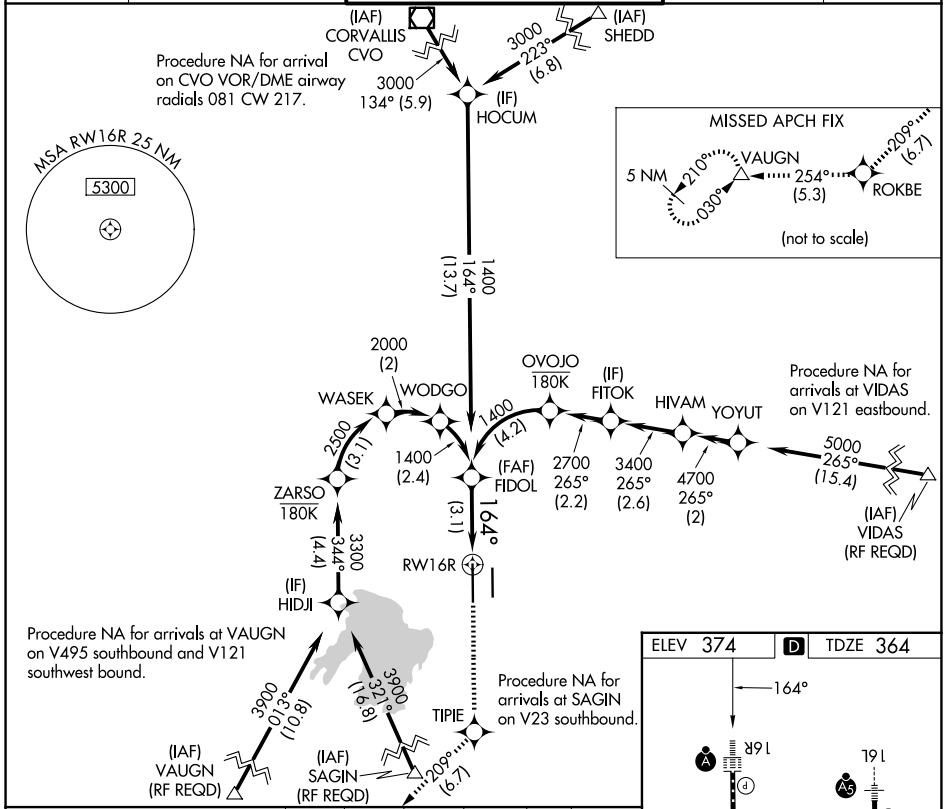
RNP AR APCH.

▼ For uncompensated Baro-VNAV systems, procedure NA below -9°C or above 54°C. Simultaneous approach authorized. For inop ALS, increase RNP 0.17 all Cats visibility to RVR 4000 and RNP 0.30 all Cats visibility to RVR 5500.

ALSF-2

MISSED APPROACH: Climb to 5000 direct TIPIE, and on track 209° to ROKBE, and track 254° to VAUGN and hold, continue climb-in-hold to 5000.

ATIS <b>125.225</b>	CASCADE APP CON ★ <b>119.6 348.7</b>	EUGENE TOWER ★ <b>118.9 (CTAF) 371.9 (16R/34L)</b> <b>124.15 371.9 (16L/34R)</b>	GND CON <b>121.7 269.5</b>	UNICOM <b>122.95</b>
------------------------	---	--	-------------------------------	-------------------------



CATEGORY	A	B	C	D
RNP 0.17 DA		614/24	250 (300-½)	
RNP 0.30 DA		711/30	347 (400-¾)	

## AUTHORIZATION REQUIRED

NW-1, 11 JUN 2026 to 09 JUL 2026