

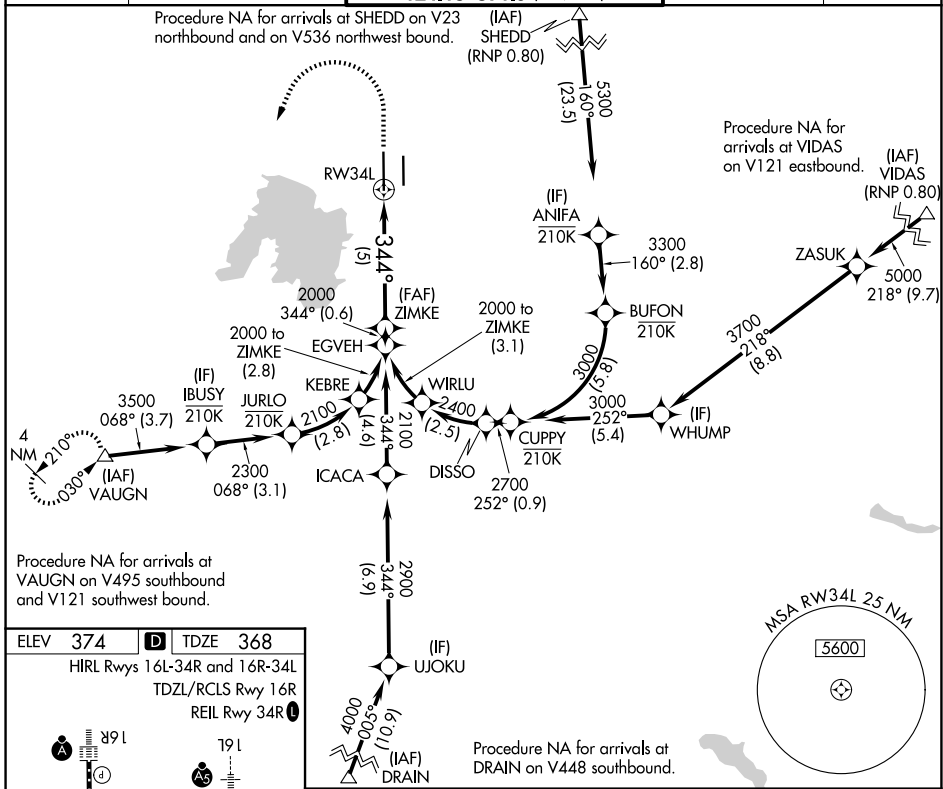
APP CRS	Rwy Ldg	8009
344°	TDZE	368
	Apt Elev	374

RNAV (RNP) Z RWY 34L

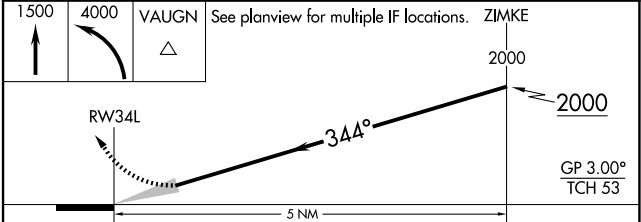
MAHLON SWEET FLD (EUG)

RNP AR APCH - GPS.		ODALS	MISSED APPROACH: Climb to 1500, then climbing left turn to 4000 direct VAUGN and hold.
<p>Simultaneous approach authorized. For uncompensated Baro-VNAV systems, procedure NA below -6°C or above 54°C. For inop ALS, increase RNP 0.20 all Cats visibility to RVR 5500; increase RNP 0.30 Cats A, B visibility to RVR 6000.</p>			

ATIS 125.225	CASCADE APP CON* 119.6 348.7	EUGENE TOWER* 118.9 (CTAF) 371.9 (16R/34L) 124.15 371.9 (16L/34R)	GND CON 121.7 269.5	UNICOM 122.95
------------------------	--	---	-------------------------------	-------------------------



ELEV 374	D TDZE 368
HIRL Rwy 16L-34R and 16R-34L	
TDZL/RCLS Rwy 16R	
REIL Rwy 34R	



CATEGORY	A	B	C	D
RNP 0.20 DA		720/45	352 (400-7%)	
RNP 0.30 DA		761/50	393 (400-1)	

AUTHORIZATION REQUIRED

NW-1, 11 JUN 2026 to 09 JUL 2026

NW-1, 11 JUN 2026 to 09 JUL 2026