

WAAS CH <b>81827</b> <b>W16A</b>	APP CRS <b>164°</b>	Rwy Ldg TDZE Apt Elev	<b>6000</b> <b>369</b> <b>374</b>
--	------------------------	-----------------------------	---

# RNAV (GPS) Y RWY 16L

MAHLON SWEET FLD (EUG)

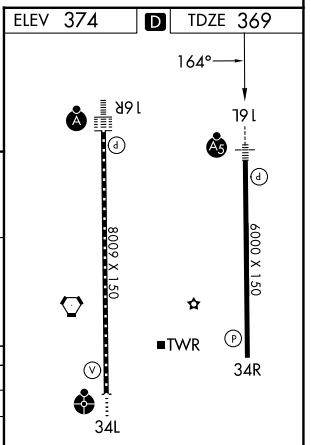
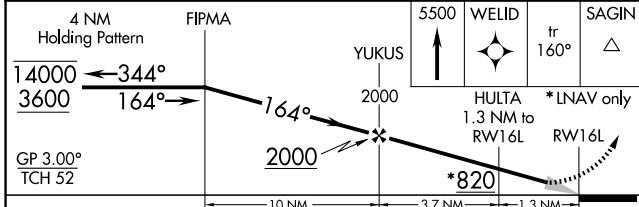
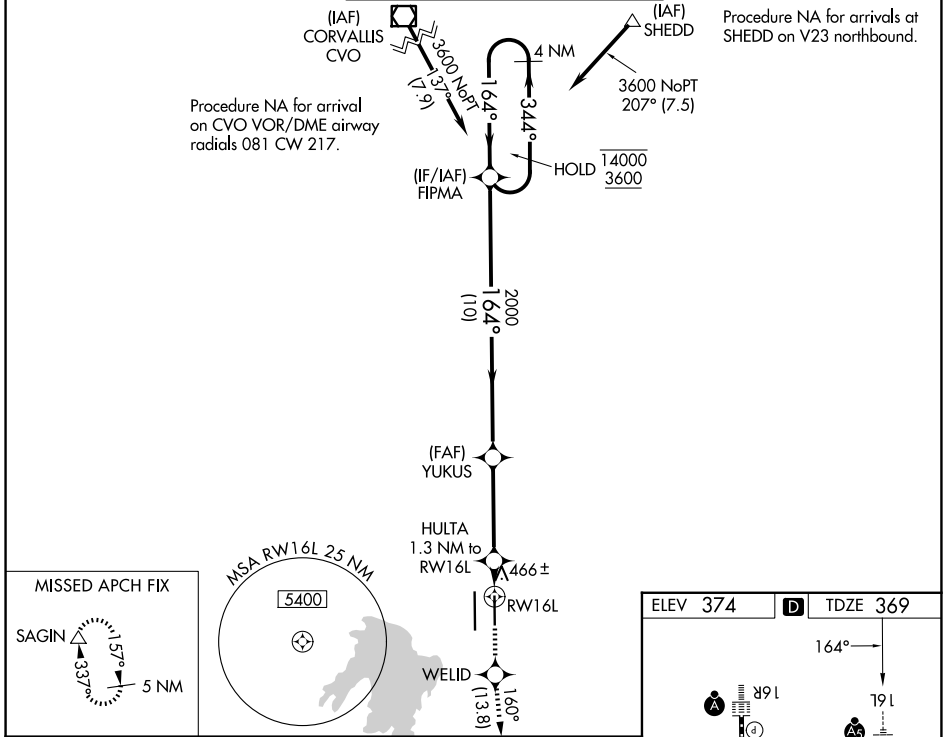
RNP APCH.

⚠ Simultaneous approach authorized. LNAV procedure NA during simultaneous operations. Use of FD or AP providing RNAV track guidance required during simultaneous operations. For uncompensated Baro-VNAV systems, LNAV/VNAV NA below -10°C or above 54°C. For Inop ALS, increase LNAV/VNAV all Cats visibility to ½ SM, increase LNAV Cat C/D visibility to 1 SM.

MALSRL

MISSED APPROACH: Climb to 5500 direct WELID and on track 160° to SAGIN and hold, continue climb-in-hold to 5500.

ATIS <b>125.225</b>	CASCADE APP CON* <b>119.6 348.7</b>	EUGENE TOWER* <b>118.9 (CTAF) 371.9 (16R/34L)</b> <b>124.15 371.9 (16L/34R)</b>	GND CON <b>121.7 269.5</b>	UNICOM <b>122.95</b>
------------------------	--	---	-------------------------------	-------------------------



CATEGORY	A	B	C	D
LPV DA		569-½	200 (200-½)	
LNAV/VNAV DA		632-½	263 (300-½)	
LNAV MDA	720-½	351 (400-½)	720-⅝	351 (400-⅝)
CIRCLING	820-1 446 (500-1)	840-1 466 (500-1)	1000-1¾ 626 (700-1¾)	1140-2½ 766 (800-2½)

TDZL/RCLS Rwy 16R  
REIL Rwy 34R

HIRL Rws 16L-34R and Rwy 16R-34L

NW-1, 11 JUN 2026 to 09 JUL 2026

NW-1, 11 JUN 2026 to 09 JUL 2026