


LOC I-PAE 109.3	APP CRS 163°	Rwy Ldg TDZE Apt Elev	9010 570 608
---------------------------	------------------------	-----------------------------	---

ILS Z RWY 16R (SA CAT II)

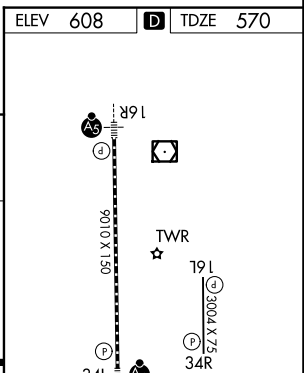
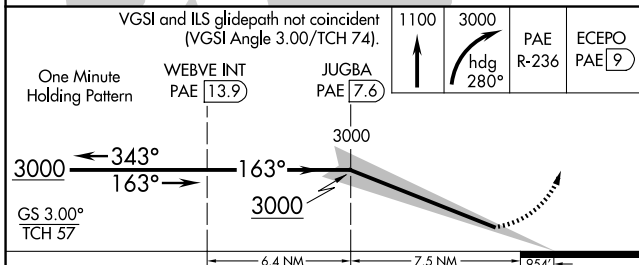
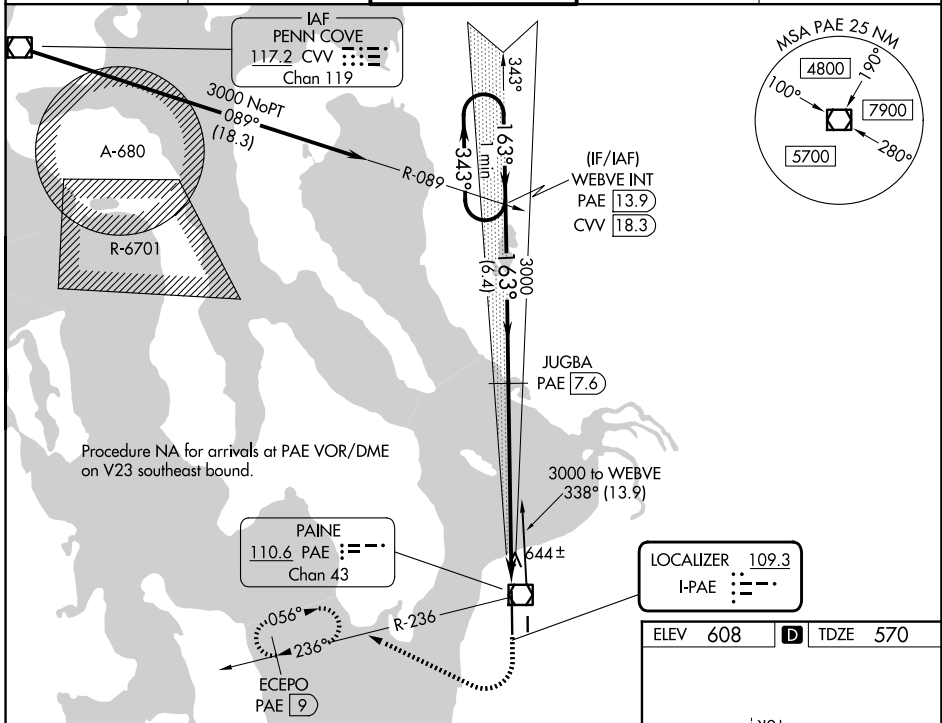
SEATTLE PAINE FLD INTL (PAE)

⚠ DME required. Reduced Lighting: Requires specific OPSPEC, MSPEC, or LOA approval and use of autoland or HUD to touchdown.
⚠ DME from PAE VOR/DME. Simultaneous reception of I-PAE and PAE DME required. Procedure NA when control tower closed.

MALSR 

MISSED APPROACH: Climb to 1100 then climbing right turn to 3000 on heading 280° and PAE VOR/DME R-236 to ECEPO/PAE 9 DME and hold, continue climb-in-hold to 3000.

ATIS 128.65	SEATTLE APP CON 128.5 306.9	PAINE TOWER* 132.95 (CTAF) 256.7	GND CON 121.8 339.8	UNICOM 122.95
-----------------------	---------------------------------------	--	-------------------------------	-------------------------



CATEGORY	A	B	C	D
S-ILS 16R	RA 116/12 100 DA 670			

SA CATEGORY II ILS - SPECIAL AIRCREW & AIRCRAFT CERTIFICATION REQUIRED

TDZL/RCLS Rwy 16R
 HIRL Rwy 16R-34L
 REIL Rwy 16L and 34R
 MIRL Rwy 16L-34R

NW-1, 11 JUN 2026 to 09 JUL 2026

NW-1, 11 JUN 2026 to 09 JUL 2026