

LOC I-PAE <b>109.3</b>	APP CRS <b>163°</b>	Rwy Ldg TDZE Apt Elev	<b>9010</b> <b>570</b> <b>608</b>
---------------------------	------------------------	-----------------------------	---

# ILS Z or LOC Z RWY 16R

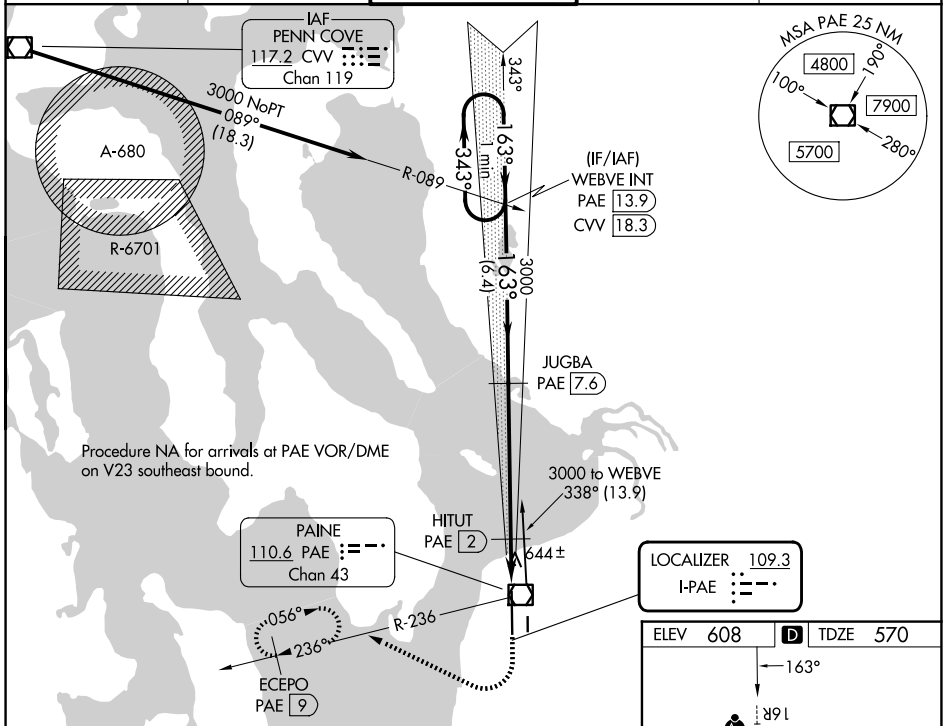
SEATTLE PAINE FLD INTL (P.A.E.)

**⚠** Circling Rwy 34R NA at night. DME required. For inop ALS, increase S-LOC 16R Cats C/D visibility to RVR 5500. DME from PAE VOR/DME. Simultaneous reception of I-PAE and PAE DME required.

**MALSR**  
AS

**MISSED APPROACH:** Climb to 1100 then climbing right turn to 3000 on heading 280° and PAE VOR/DME R-236 to ECEPO/PAE 9 DME and hold, continue climb-in-hold to 3000.

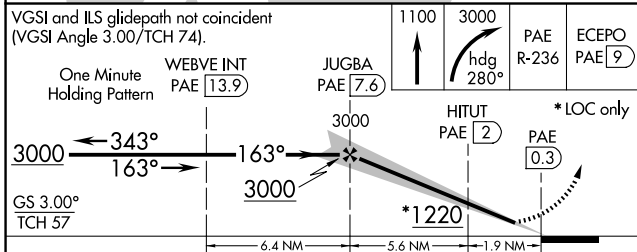
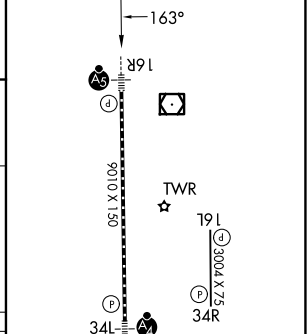
ATIS <b>128.65</b>	SEATTLE APP CON <b>128.5 306.9</b>	PAINE TOWER* <b>132.95 (CTAF) 256.7</b>	GND CON <b>121.8 339.8</b>	UNICOM <b>122.95</b>
-----------------------	---------------------------------------	--	-------------------------------	-------------------------



Procedure NA for arrivals at PAE VOR/DME on V23 southeast bound.

**LOCALIZER 109.3**  
I-PAE

ELEV 608	<b>D</b> TDZE 570
----------	-------------------



CATEGORY	A	B	C	D
S-ILS 16R	770/18 200 (200-½)			
S-LOC 16R	940/24 370 (400-½)		940/35 370 (400-¾)	
CIRCLING	1100-1 492 (500-1)		1120-1½ 512 (600-1½)	
			1160-2 552 (600-2)	

TDZL/RCLS Rwy 16R  
HIRL Rwy 16R-34L  
REIL Rws 16L and 34R  
MIRL Rwy 16L-34R

NW-1, 11 JUN 2026 to 09 JUL 2026

NW-1, 11 JUN 2026 to 09 JUL 2026