

VOR/DME PAE 110.6 Chan 43	APP CRS 160°	Rwy Ldg TDZE Apt Elev	N/A N/A 608
---	------------------------	-----------------------------	--

VOR-A

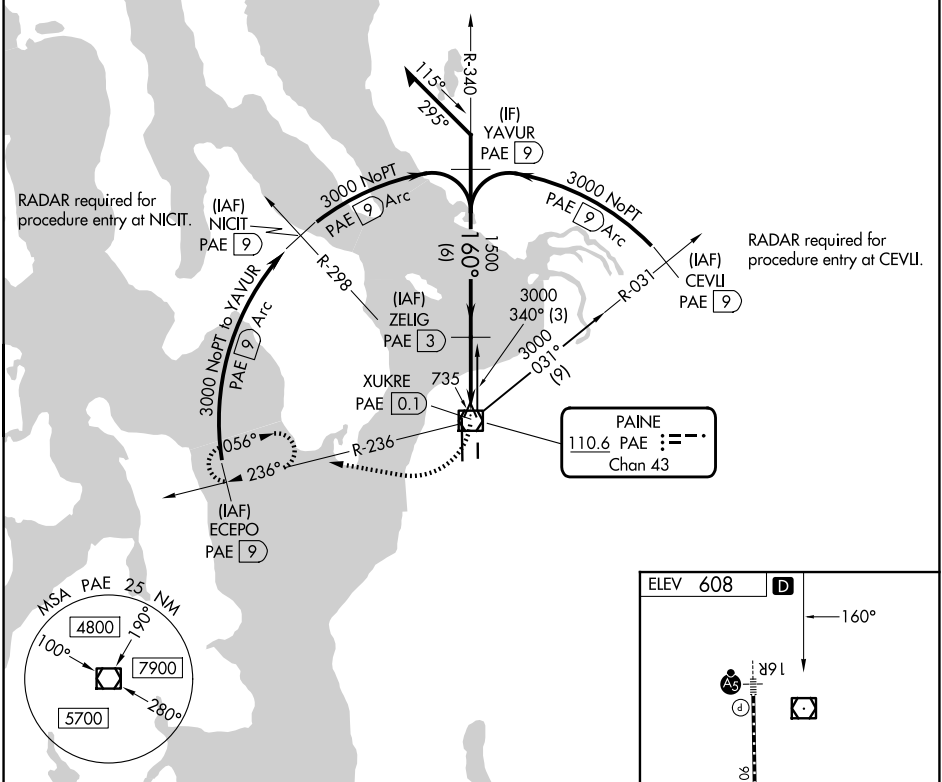
SEATTLE PAINE FLD INTL (P.A.E)

▼ Circling Rwy 34R NA at night. DME required.

MISSED APPROACH: Climbing right turn to 2000 on heading 260° and PAE VOR/DME R-236 to ECEPO/PAE 9 DME and hold.

ATIS 128.65	SEATTLE APP CON 128.5 306.9	PAINE TOWER* 132.95 (CTAF) 0 256.7	GND CON 121.8 339.8	UNICOM 122.95
-----------------------	---------------------------------------	--	-------------------------------	-------------------------

DME REQUIRED



NW-1, 11 JUN 2026 to 09 JUL 2026

NW-1, 11 JUN 2026 to 09 JUL 2026

