

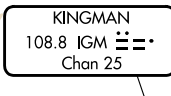
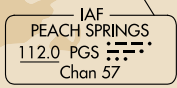
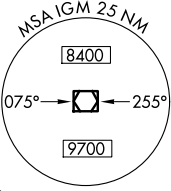
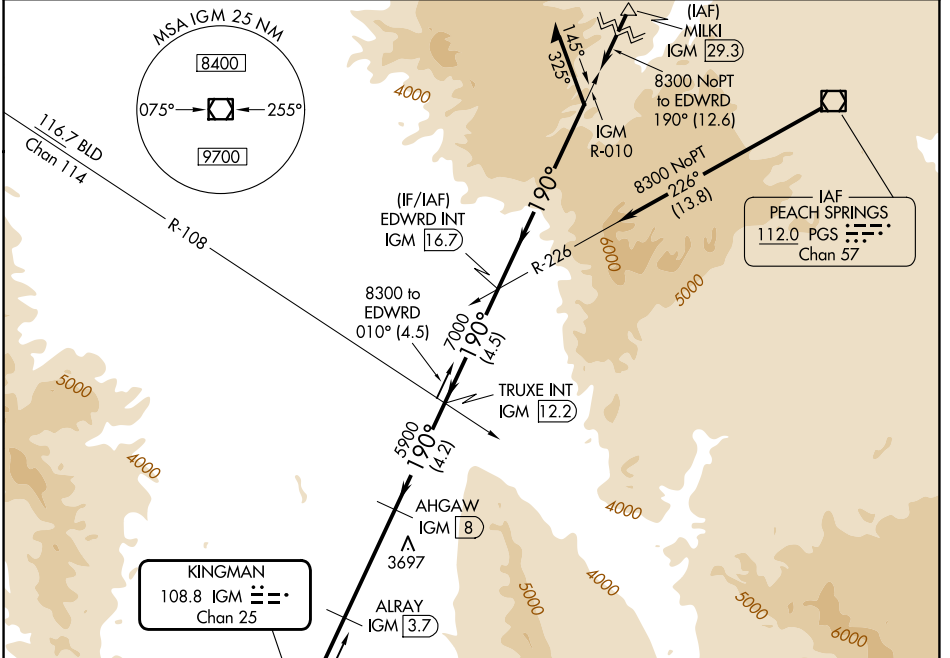
VOR/DME IGM <b>108.8</b> Chan 25	APP CRS <b>190°</b>	Rwy Ldg TDZE <b>6827</b> <b>3403</b> Apt Elev <b>3449</b>
--	------------------------	---

# VOR/DME RWY 21

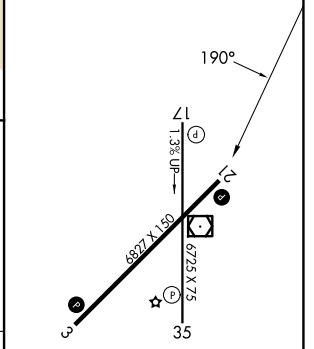
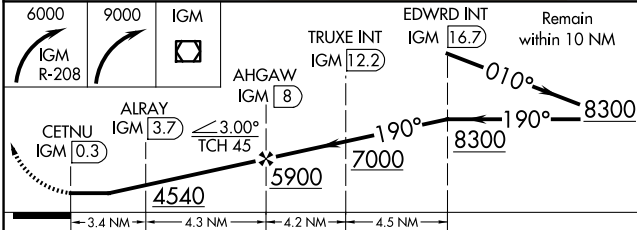
KINGMAN (IGM)

**⚠** Circling Rwy 35 NA at night. **⚠** MISSED APPROACH: Climbing right turn to 6000 via IGM VOR/DME R-208 then climbing right turn to 9000 direct IGM VOR/DME and hold.

ASOS <b>119.275</b>	LOS ANGELES CENTER <b>124.85 319.2</b>	UNICOM <b>122.8</b> (CTAF) <b>📻</b>
------------------------	---	--



ELEV 3449	<b>D</b> TDZE 3403
-----------	--------------------



CATEGORY	A	B	C	D
S-21	3880-1	477 (500-1)	3880-1¼ 477 (500-1¼)	3880-1½ 477 (500-1½)
CIRCLING	3980-1 531 (600-1)	4100-1 651 (700-1)	4420-3 971 (1000-3)	5340-3 1891 (2000-3)

MIRL Rwy 3-21 and 17-35 **📻**  
REIL Rwy 3 and 21 **📻**

SW-4, 11 JUN 2026 to 09 JUL 2026

SW-4, 11 JUN 2026 to 09 JUL 2026