

KNOXVILLE, TENNESSEE

AL-218 (FAA)

26022

WAAS CH 81902 W23A	APP CRS 231°	Rwy Ldg TDZE Apt Elev	9495 984 986
--	------------------------	-----------------------------	---

RNAV (GPS) RWY 23R

MC GHEE TYSON (T'YS)

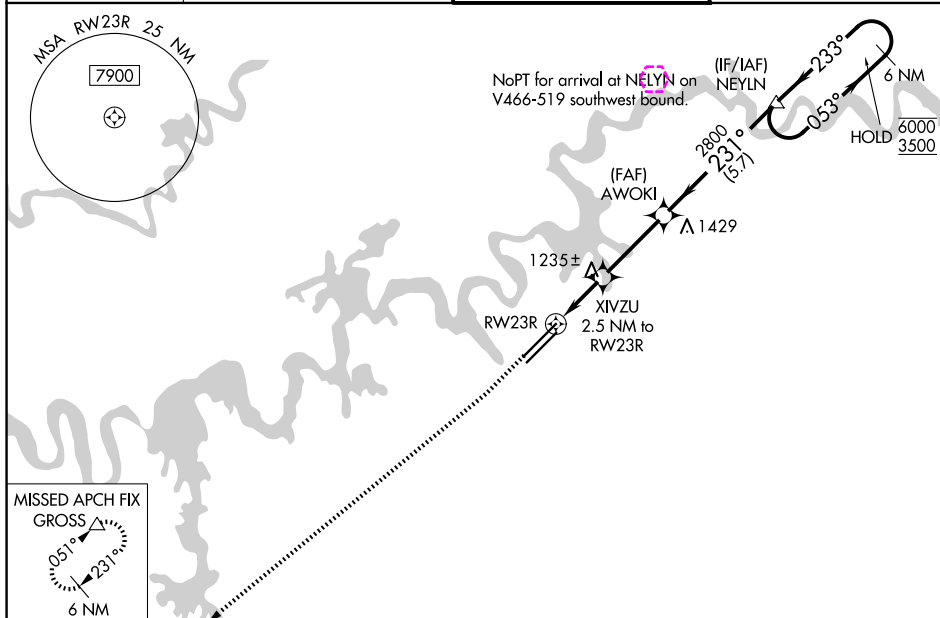
RNP APCH - GPS.

▲ For uncompensated Baro-VNAV systems, LNAV/VNAV NA below -10°C or above 54°C. For inop ALS, increase LNAV Cat C/D visibility to 1½ SM.

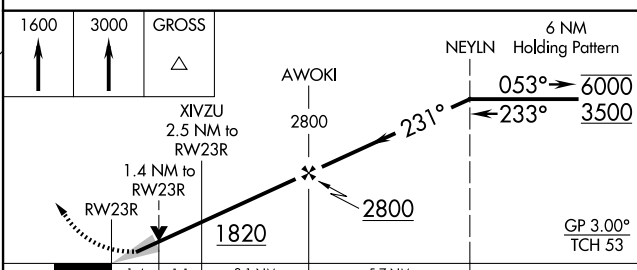
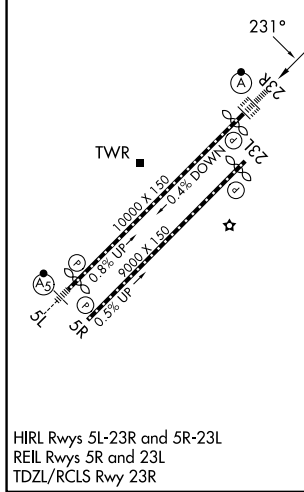
ALS F-2

MISSED APPROACH: Climb to 1600 then climb to 3000 direct GROSS and hold.

ATIS 128.35	KNOXVILLE APP CON 123.9 360.8	KNOXVILLE TOWER 121.2 257.8	GND CON 121.9 348.6
-----------------------	---	---------------------------------------	-------------------------------



ELEV	986	D	TDZE	984
------	-----	----------	------	-----



CATEGORY	A	B	C	D
LPV DA	1184/18		200 (200-½)	
LNAV/VNAV DA	1529-1½		545 (600-1½)	
LNAV MDA	1500/24	516 (600-½)	1500/55	516 (600-1)
CIRCLING	1500-1 514 (600-1)	1560-1 574 (700-1)	1660-2 674 (700-2)	1900-3 914 (1000-3)

KNOXVILLE, TENNESSEE
Amdt 3 12AUG21

35°49'N-84°00'W

RNAV (GPS) RWY 23R

SE-1, 14 MAY 2026 to 11 JUN 2026

SE-1, 14 MAY 2026 to 11 JUN 2026

KNOXVILLE, TENNESSEE

AL-218 (FAA)

26162

WAAS CH 81902 W23A	APP CRS 231°	Rwy Ldg TDZE Apt Elev	9495 984 986
--	------------------------	-----------------------------	---

RNAV (GPS) RWY 23R

MC GHEE TYSON (T'YS)

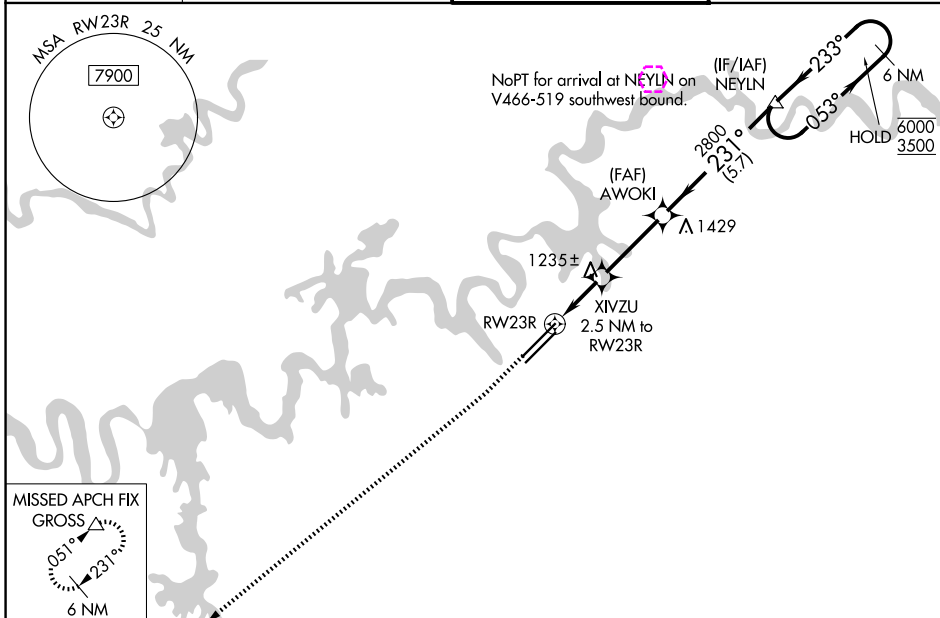
RNP APCH - GPS.

⚠ For uncompensated Baro-VNAV systems, LNAV/VNAV NA below -10°C or above 54°C. For inop ALS, increase LNAV Cat C/D visibility to 1½ SM.

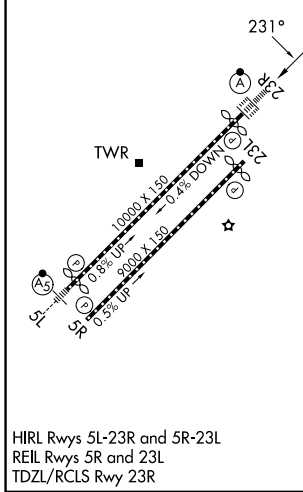
ALS-F-2

MISSED APPROACH: Climb to 1600 then climb to 3000 direct GROSS and hold.

ATIS 128.35	KNOXVILLE APP CON 123.9 360.8	KNOXVILLE TOWER 121.2 257.8	GND CON 121.9 348.6
-----------------------	---	---------------------------------------	-------------------------------



ELEV 986	D	TDZE 984
----------	----------	----------



CATEGORY	A	B	C	D
LPV DA		1184/18	200 (200-½)	
LNAV/VNAV DA		1529-1½	545 (600-1½)	
LNAV MDA	1500/24	516 (600-½)	1500/55	516 (600-1)
CIRCLING	1500-1 514 (600-1)	1560-1 574 (700-1)	1660-2 674 (700-2)	1900-3 914 (1000-3)

KNOXVILLE, TENNESSEE
Amdt 3 12AUG21

35°49'N-84°00'W

RNAV (GPS) RWY 23R

SE-1, 11 JUN 2026 to 09 JUL 2026

SE-1, 11 JUN 2026 to 09 JUL 2026