

DREAM SEVEN DEPARTURE (DREAM7.DREAM)

NELLIS AFB (KLSV)

LAS VEGAS, NEVADA

ATIS 270.1
CLNC DEL
120.9 289.4
GND CON
121.8 275.8
TOWER
132.55 327.0
DEP CON
135.1 350.225

**TOP ALTITUDE:
FL190**

[USAF]

| Rwy | Knots | 60 | 120 | 180 | 240 | 300 | 360 |
|------------|----------|-----|-----|------|------|------|------|
| * 3 L (a) | V/V(fpm) | 305 | 610 | 915 | 1220 | 1525 | 1830 |
| * 3 R (b) | V/V(fpm) | 251 | 502 | 753 | 1004 | 1255 | 1506 |
| † 3 L (c) | V/V(fpm) | 498 | 996 | 1494 | 1992 | 2490 | 2988 |
| † 3 R (c) | V/V(fpm) | 496 | 992 | 1488 | 1984 | 2480 | 2976 |
| * 21 L (d) | V/V(fpm) | 387 | 774 | 1161 | 1548 | 1935 | 2322 |
| * 21 R (d) | V/V(fpm) | 393 | 786 | 1179 | 1572 | 1965 | 2358 |
| † 21 L (c) | V/V(fpm) | 453 | 906 | 1359 | 1812 | 2265 | 2718 |
| † 21 R (c) | V/V(fpm) | 457 | 914 | 1371 | 1828 | 2285 | 2742 |

NOT FOR CIVIL USE

* Minimum † ATC Climb Rate

- (a) to 3600
- (b) to 3300
- (c) to 17,000
- (d) to 8900

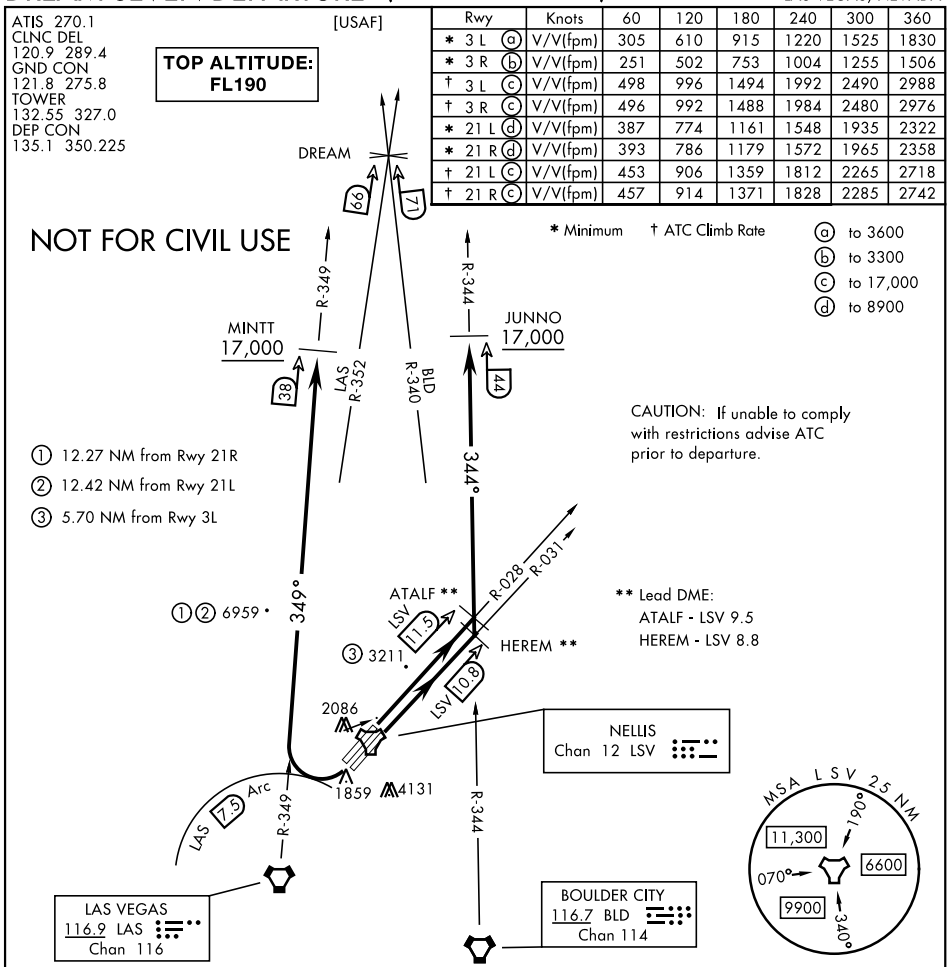
CAUTION: If unable to comply with restrictions advise ATC prior to departure.

- ① 12.27 NM from Rwy 21R
- ② 12.42 NM from Rwy 21L
- ③ 5.70 NM from Rwy 3L

** Lead DME:
ATALF - LSV 9.5
HEREM - LSV 8.8

SW-4, 11 JUN 2026 to 09 JUL 2026

SW-4, 11 JUN 2026 to 09 JUL 2026



DEPARTURE ROUTE DESCRIPTION

TAKEOFF RWY 3L: Fly runway heading to intercept the LSV TACAN R-028 then direct ATALF, intercept the BLD VORTAC R-344 then direct JUNNO, cross JUNNO at or above 17,000, thence...

TAKEOFF RWY 3R: Fly runway heading to intercept the LSV TACAN R-031 then direct HEREM, intercept the BLD VORTAC R-344 then direct JUNNO, cross JUNNO at or above 17,000, thence...

TAKEOFF RWY 21L/R: Turn right to intercept LAS VORTAC R-349 outbound. Remain North of LAS 7.5 DME turning Northbound. Intercept LAS R-349 between 5000 and 6000, do not proceed West of LAS R-349. Cross MINTT at above 17,000, thence...

...maintain FL190, then via assigned route.

DREAM SEVEN DEPARTURE (DREAM7.DREAM)

Amdt 7 12JUN25

LAS VEGAS, NEVADA

NELLIS AFB (KLSV)