

LAS VEGAS, NEVADA

HI-TACAN RWY 3R

TACAN LSV Chan 12	APCH CRS 029°	Rwy ldg TDZE Arprt Elev	10,051 1833 1869
----------------------	------------------	-------------------------------	------------------------

AL-227 (USAF)

NELLIS AFB (KLSV)

RADAR required.

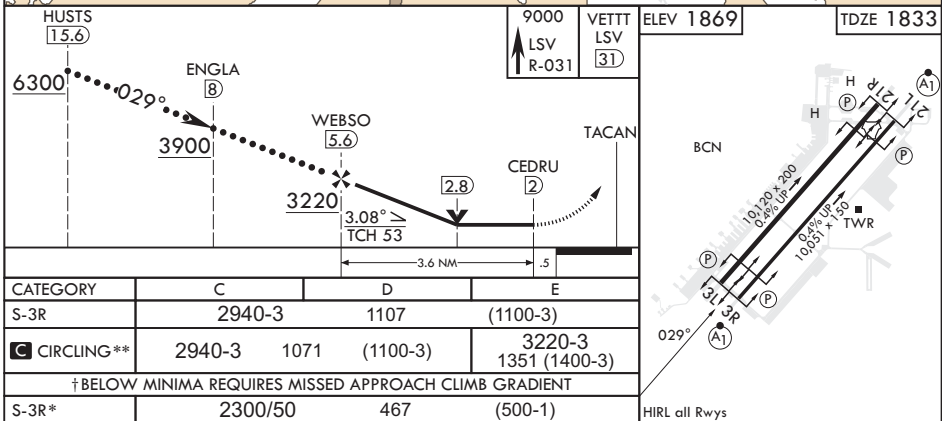
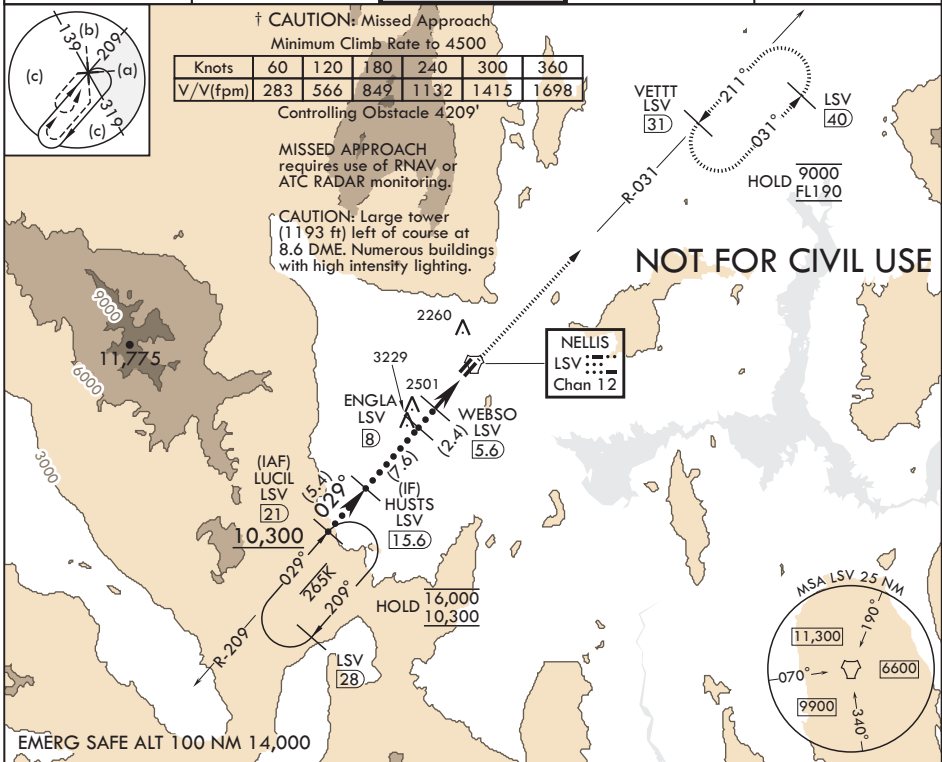
⚠ * When ALS inop, increase vis to 1 3/8 miles.
 ** Circling NA SE of Rwy 3R-21L.

ALSF-1



MISSED APPROACH: Climb to 9000 on LSV TACAN R-031 to VETT and hold.

ATIS 270.1	APP CON 124.95 273.55	TOWER 132.55 327.0	GND CON 121.8 275.8	CLNC DEL 120.9 289.4
---------------	--------------------------	-----------------------	------------------------	-------------------------



SW-4, 11 JUN 2026 to 09 JUL 2026

SW-4, 11 JUN 2026 to 09 JUL 2026

LAS VEGAS, NEVADA

36°14'N - 115°02'W

NELLIS AFB (KLSV)

Amdt 10 10AUG23

HI-TACAN RWY 3R