

# LOC Y RWY 21L

LOC I-DIQ <b>109.1</b>	APCH CRS <b>209°</b>	Rwy ldg 21L <b>10,051</b> TDZE <b>1865</b> Arpt Elev <b>1869</b>	Rwy ldg 21R <b>10,120</b> TDZE <b>1869</b>
---------------------------	-------------------------	--	--

[USAF]

NELLIS AFB (KLSV)

RADAR or DME required. RNAV or RADAR required for missed apch.



**MISSED APPROACH:** Climb to 8000, intercept the LAS VORTAC R-018 to 10.3 DME (IREEN), then to LAS and hold, continue climb in hold to 8000.

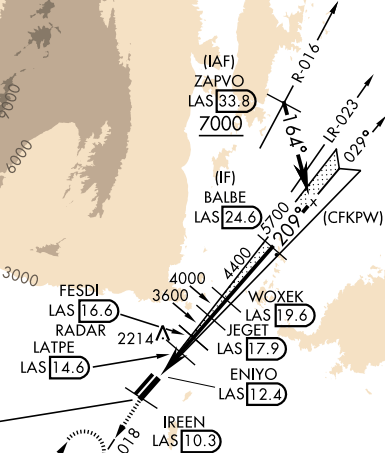
- \* When ALS inop, increase vis to 1 1/2 miles.
- \*\* Circling not authorized SE of Rwy 3R-21L.

ATIS <b>270.1</b>	APP CON <b>124.95 273.55</b>	TOWER <b>132.55 327.0</b>	GND CON <b>121.8 275.8</b>	CLNC DEL <b>120.9 289.4</b>
----------------------	---------------------------------	------------------------------	-------------------------------	--------------------------------

Knots	60	120	180	240	300	360
V/V(fpm)	450	900	1350	1800	2250	2700

ATC climb of 450 ft/NM to 8000

## FOR USE BY NELLIS AFB ASSIGNED AIRCRAFT ONLY

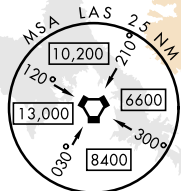


LAS VEGAS VORTAC DME not usable for missed approach holding.

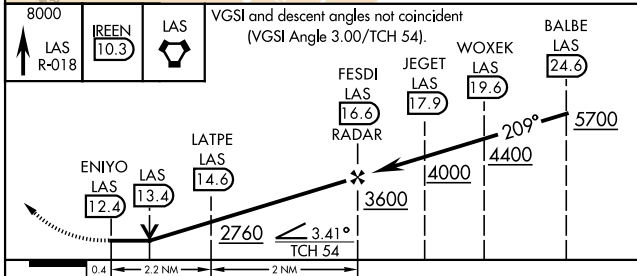
Localizer unusable beyond 25° right of course.

LOCALIZER 109.1  
I-DIQ

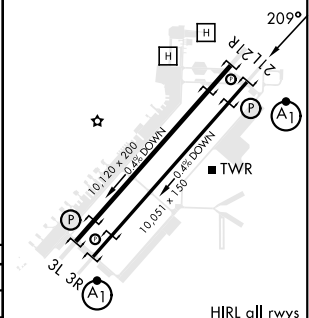
LAS VEGAS  
116.9 LAS  
Chan 116



EMERG SAFE ALT 100 NM 14,000



ELEV 1869	TDZE 21L 1865
	TDZE 21R 1869



CATEGORY	C	D	E
S-21L *	2360/50	495 (500-1)	
SIDESTEP 21R	2360-1 3/8	491 (500-1 3/8)	
CIRCLING **	2560-2 691 (700-2)	2840-3 971 (1000-3)	3140-3 1271 (1300-3)

FAF to MAP 4.2 NM					
Knots	60	90	120	150	180
Min:Sec	4:12	2:48	2:06	1:41	1:24

# LOC Y RWY 21L

SW-4, 11 JUN 2026 to 09 JUL 2026

SW-4, 11 JUN 2026 to 09 JUL 2026