

# SIN CITY VISUAL RWY 03L/R

AL-227 (USAF)

NELLIS AFB (KLSV)

LAS VEGAS, NEVADA

RADAR required

GASS PEAK  
● 6943

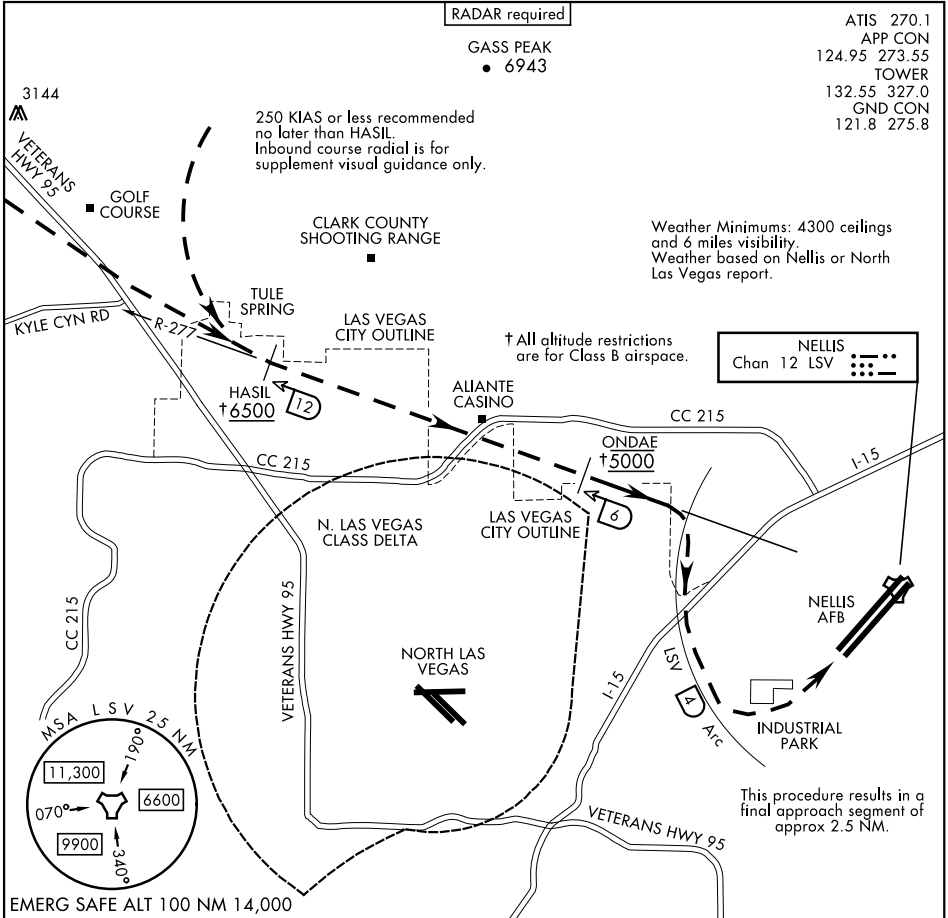
ATIS 270.1  
 APP CON 124.95 273.55  
 TOWER 132.55 327.0  
 GND CON 121.8 275.8

250 KIAS or less recommended  
 no later than HASIL.  
 Inbound course radial is for  
 supplement visual guidance only.

Weather Minimums: 4300 ceilings  
 and 6 miles visibility  
 Weather based on Nellis or North  
 Las Vegas report.

† All altitude restrictions  
 are for Class B airspace.

NELLIS  
 Chan 12 LSV



SW-4, 11 JUN 2026 to 09 JUL 2026

SW-4, 11 JUN 2026 to 09 JUL 2026

EMERG SAFE ALT 100 NM 14,000

1	2	3	4	5	6	7	8	9	10	11	12	13	14	15	16
---	---	---	---	---	---	---	---	---	----	----	----	----	----	----	----

## SIN CITY VISUAL RWY 03L/R

Expect RADAR vectors to HASIL (LSV TACAN R-277/12 DME) and report Northwest Las Vegas city outline in sight (ATC Clearance - "Cleared Sin City Visual Rwy 03 Approach")  
 Cross HASIL at or above 6500, proceed visually via LSV R-277 and descend to cross ONDAE at 5000.

Based on traffic conditions, ATC may assign a different DME and/or an altitude to maintain until established visually on LSV R-277; pilots shall advise ATC if unable to comply with the revised clearance and any remaining published altitude restrictions. - example: "Cleared Sin City Visual Rwy 03 Approach via 10 DME, maintain (altitude) until established inbound on LSV R-277".

Continue visual descent in right turn to join LSV TACAN 4 DME Arc until extended final Rwy 03. Make base turn to remain within 4 DME to protect against Las Vegas Approach airspace/traffic. Tower will assign either RWY 03 L/R.

## SIN CITY VISUAL RWY 03L/R

Amdt 3 10AUG23

36°14'N-115°02'W

LAS VEGAS, NEVADA  
NELLIS AFB (KLSV)