

LAS VEGAS, NEVADA

# TACAN X RWY 21L

TACAN LSV Chan 12 APCH CRS 210°

Rwy ldg 21L 21R  
 TDZE 10,051 10,120  
 Arprt Elev 1865 1869

AL-227 (USAF)

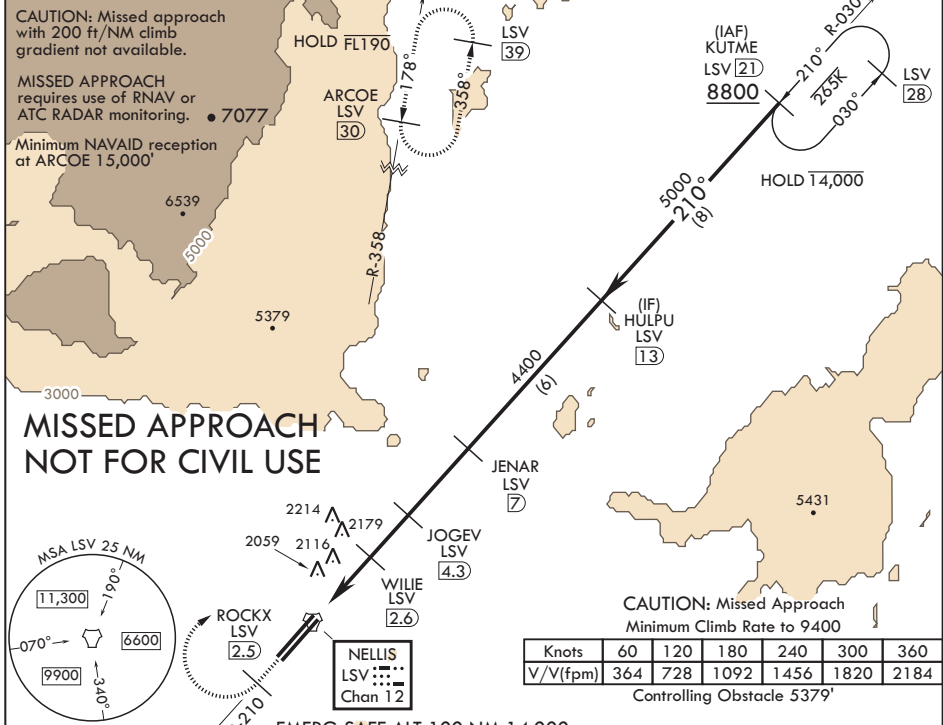
NELLIS AFB (KLSV)

**V** \* When ALS inop, increase CAT AB RVR to 55, vis to 1 mile, CAT CDE vis to 1 5/8 miles.  
 \*\* Circling not authorized SE of Rwy 3R-21L.

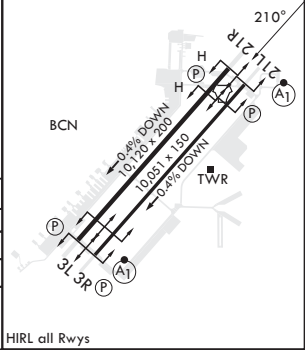
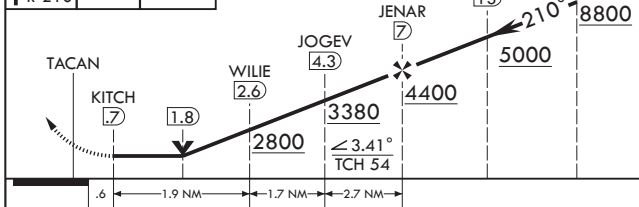


**MISSED APPROACH:** Climb to 15,000, intercept LSV TACAN R-210 to 2.5 DME (ROCKX), then climbing right turn heading 043° to intercept LSV R-358 to ARCOE and hold, climb in hold to 15,000. Missed approach not for civil use.

ATIS <b>270.1</b>	APP CON <b>124.95 273.55</b>	TOWER <b>132.55 327.0</b>	GND CON <b>121.8 275.8</b>	CLNC DEL <b>120.9 289.4</b>
----------------------	---------------------------------	------------------------------	-------------------------------	--------------------------------



15,000 LSV R-210	ROCKX LSV 2.5	hdg 043°	VGSI and descent angles not coincident (VGSI Angle 3.00/TCH 54).	ELEV 1869	TDZE 21L 1865 TDZE 21R 1869
------------------	---------------	----------	--	-----------	--------------------------------



CATEGORY	A	B	C	D	E
S-21L*	2440/24 575 (600-½)		2440-1¼ 575 (600-1¼)		
SIDESTEP 21R	2440-1 571 (600-1)		2440-1⅝ 571 (600-1⅝)		
<b>C</b> CIRCLING**	2440-1 571 (600-1)	2460-1 591 (600-1)	2560-2 691 (700-2)	2840-3 971 (1000-3)	3140-3 1271 (1300-3)

LAS VEGAS, NEVADA  
 Amdt 10 10AUG23

36°14'N - 115°02'W

NELLIS AFB (KLSV)

# TACAN X RWY 21L

SW-4, 11 JUN 2026 to 09 JUL 2026

SW-4, 11 JUN 2026 to 09 JUL 2026