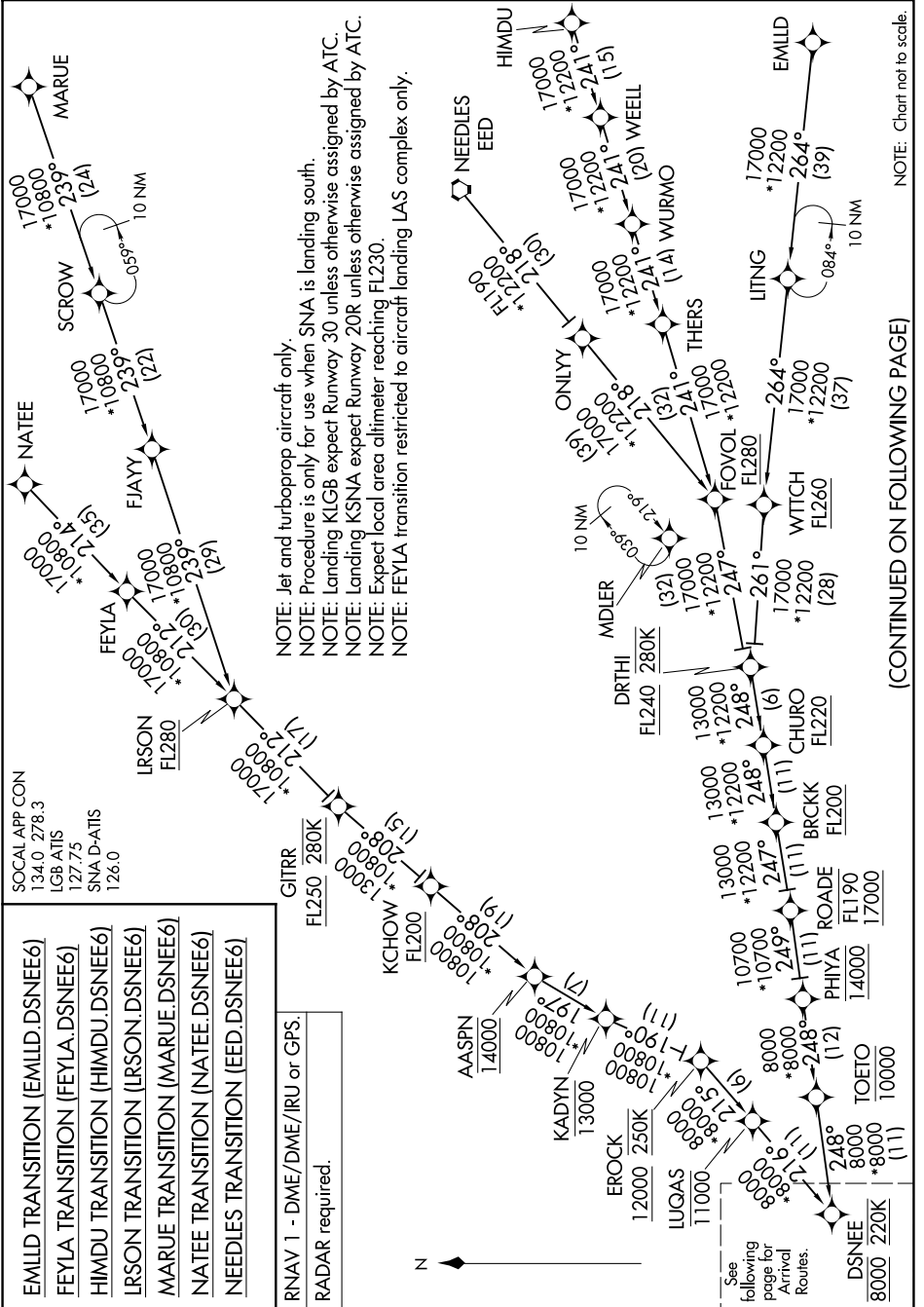


DSNEE SIX ARRIVAL (RNAV) Transition Routes

LONG BEACH, CALIFORNIA

9200 TUF 60 of 9200 TUF 11 '8-M



(CONTINUED ON FOLLOWING PAGE)

SW-3, 11 JUN 2026 to 09 JUL 2026

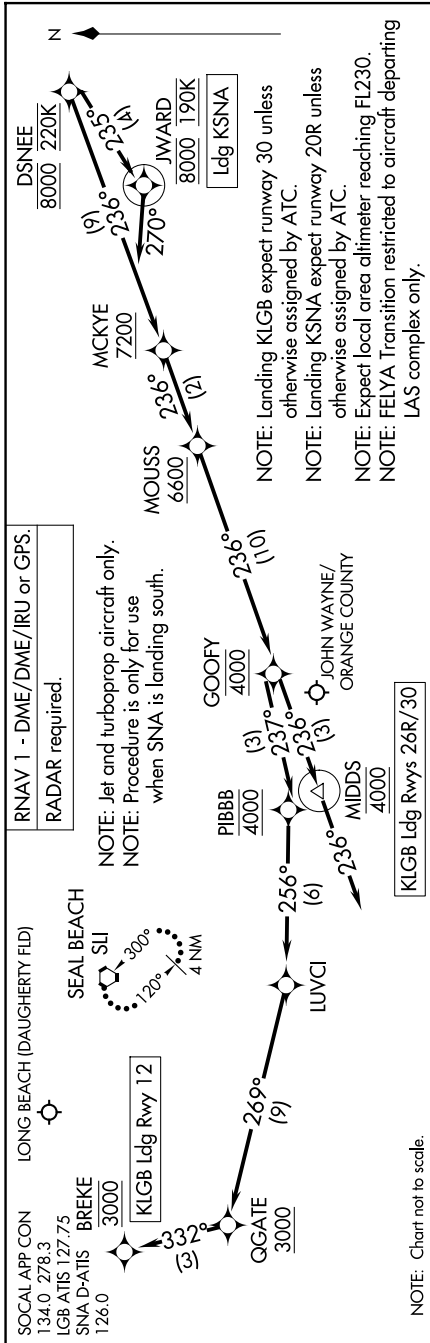
DSNEE SIX ARRIVAL (RNAV) Transition Routes

LONG BEACH, CALIFORNIA

DSNEE SIX ARRIVAL (RNAV) Arrival Routes

LONG BEACH, CALIFORNIA

9202 7107 60 01 8202 N007 11 '8-WS



ARRIVAL ROUTE DESCRIPTION

LANDING KLGB RUNWAY 12: From DSNEE on track 236° to cross MCKYE at or above 7200, then on track 236° to cross MOUSS at or above 6600, then on track 236° to cross GOOFOY at 4000, then on track 237° to cross PIBBB at 4000, then on track 256° to LUVCI, then on track 269° to cross QGATE at or above 3000, then on track 332° to cross BREKE at 3000. Expect RNAV (RNP) RWY 12 approach.

LANDING KLGB RUNWAYS 26R, 30: From DSNEE on track 236° to cross MCKYE at or above 7200, then on track 236° to cross MOUSS at or above 6600, then on track 236° to cross GOOFOY at 4000, then on track 236° to cross MIDDS at 4000, then on track 236° Expect RADAR vectors for the ILS or RNAV RWY 26R, 30 approaches.

LANDING KSNNA: From DSNEE on track 235° to cross JWARD at 8000 and at 190K, then on heading 270°. Expect RADAR vectors for ILS or RNAV RWY 20R approach.

LOST COMMUNICATIONS:

LANDING LGB RUNWAYS 26R/30: After MIDDS proceed on the RNAV (RNP) Y RWY 30 or ILS or LOC RWY 30 approach.
LANDING LGB RUNWAY 12: After BREKE proceed on the RNAV (RNP) RWY 12 approach, if unable to conduct approach, after BREKE proceed to SLI VORTAC and hold.
LANDING SNA: After DSNEE proceed on the RNAV (RNP) Z RWY 20R approach. If unable to conduct approach, after DSNEE maintain 6000 proceed to SLI VORTAC and hold.

DSNEE SIX ARRIVAL (RNAV) Arrival Routes

LONG BEACH, CALIFORNIA