

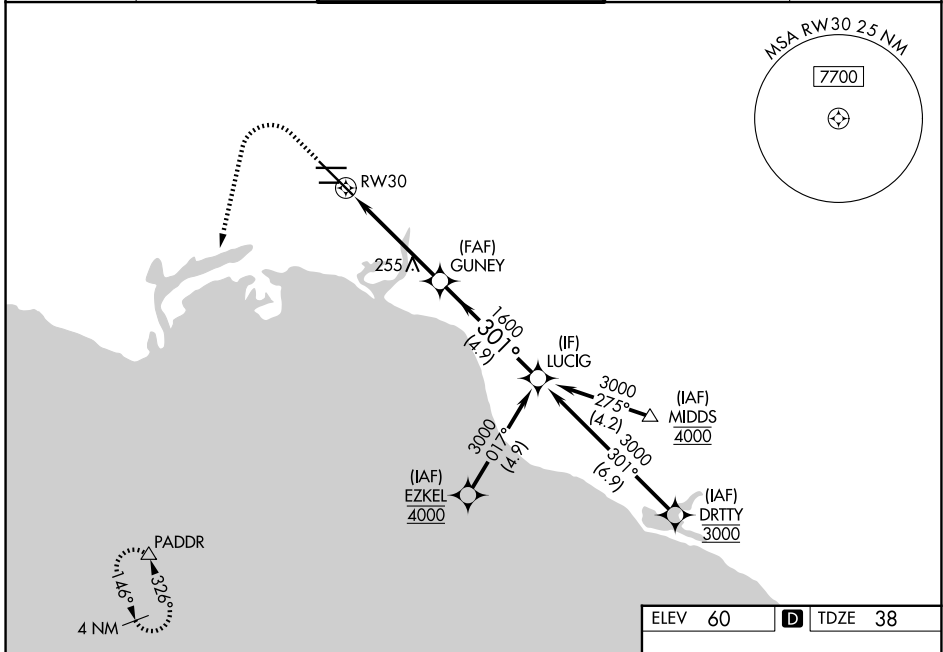
WAAS CH <b>99521</b> <b>W30A</b>	APP CRS <b>301°</b>	Rwy Ldg TDZE Apt Elev	<b>7414</b> <b>38</b> <b>60</b>
--	------------------------	-----------------------------	---------------------------------------

# RNAV (GPS) Z RWY 30

LONG BEACH (DAUGHERTY FLD) (LGB)

RNP APCH. ▼ For uncompensated Baro-VNAV systems, LNAV/VNAV NA below 4°C or above 54°C. For inop ALS, increase LNAV Cat C and D visibility to 1½ SM.	MALSR 	MISSED APPROACH: Climb to 800 then climbing left turn to 3000 direct PADDR and hold
--	-----------	---

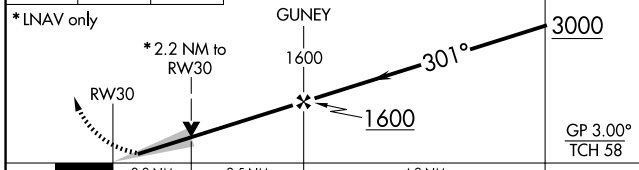
ATIS <b>127.75</b>	SOCAL APP CON <b>125.35 316.125</b>	LONG BEACH TOWER ★ <b>120.5 257.6 (12)</b> <b>119.4 (CTAF) 257.6 (30)</b>	GND CON <b>133.0 257.6</b>	UNICOM <b>122.95</b>
-----------------------	--	---	-------------------------------	-------------------------



SW-3, 11 JUN 2026 to 09 JUL 2026

SW-3, 11 JUN 2026 to 09 JUL 2026

ELEV 60	<b>D</b> TDZE 38
---------	------------------



CATEGORY	A	B	C	D
LPV DA	261/18 223 (300-½)			
LNAV/VNAV DA	568/55 530 (600-1)			
LNAV MDA	520/24 482 (500-½)	520/50 482 (500-1)		
CIRCLING	840-1 780 (800-1)	840-1⅓ 780 (800-1⅓)		

