

TANDY SIX ARRIVAL

AL-236 (FAA)

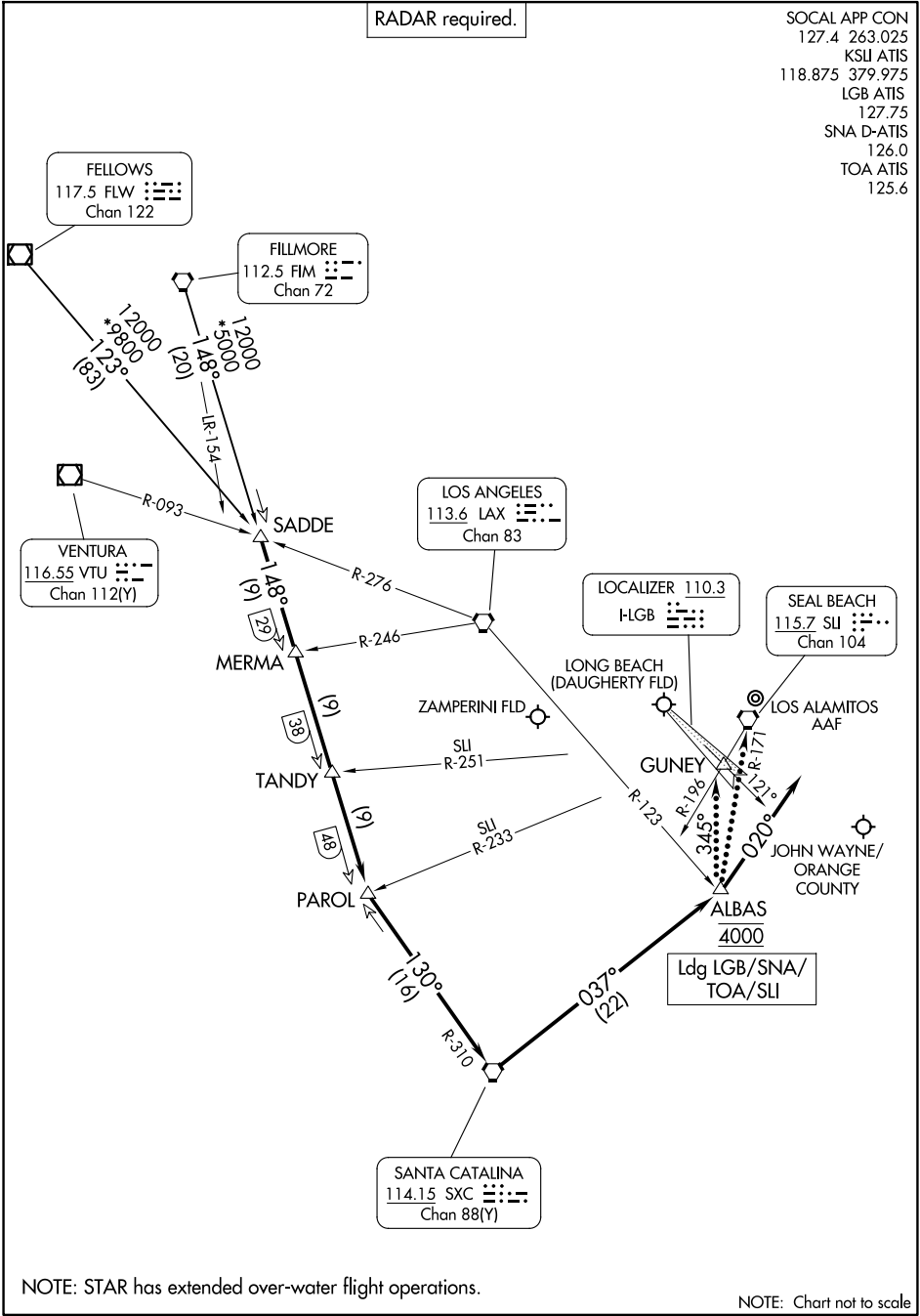
LONG BEACH, CALIFORNIA

RADAR required.

- SOCAL APP CON 127.4 263.025
- KSJ ATIS 118.875 379.975
- LGB ATIS 127.75
- SNA D-ATIS 126.0
- TOA ATIS 125.6

SW-3, 11 JUN 2026 to 09 JUL 2026

SW-3, 11 JUN 2026 to 09 JUL 2026



NOTE: STAR has extended over-water flight operations.

NOTE: Chart not to scale

TANDY SIX ARRIVAL

LONG BEACH, CALIFORNIA

ARRIVAL ROUTE DESCRIPTION

FELLOWS TRANSITION (FLW.TANDY6): From over FLW VOR/DME on FLW R-123 to SADDE. Thence. . . .

FILLMORE TRANSITION (FIM.TANDY6): From over FIM VORTAC on FIM R-148 to SADDE. Thence. . . .

LANDING ALL AIRPORTS: From over SADDE on FIM R-148 to PAROL. From over PAROL on SXC R-310 to SXC VORTAC. Then from over SXC VORTAC on SXC R-037 to cross ALBAS at 4000, then fly heading 020°. Expect RADAR vectors to final approach course.

LOST COMMUNICATIONS

LGB: From over ALBAS, maintain 4000 and turn left heading 345° to intercept the SLI R-196 to GUNEY INT, then proceed on ILS 30 approach or proceed on SLI R-171 to SLI VORTAC, then proceed on the VOR or TACAN RWY 30 approach.

TOA: Proceed on ILS RWY 29R approach.

SNA: After ALBAS, maintain 4000 and proceed on SLI R-171 to SLI VORTAC, then proceed on the ILS 20R approach.

SLI: After ALBAS, maintain 4000 and proceed on SLI R-171 to SLI VORTAC. Then proceed on the VOR or TACAN RWY 22L approach.

SW-3, 11 JUN 2026 to 09 JUL 2026

SW-3, 11 JUN 2026 to 09 JUL 2026