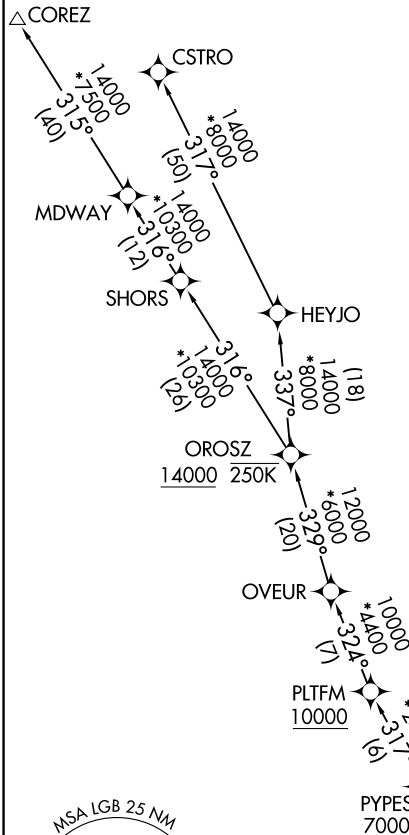


TOPMM FIVE DEPARTURE (RNAV)

RNAV 1 - DME/DME/IRU or GPS.
RADAR required.

TOP ALTITUDE:
15000

SOCAL DEP CON
125.35 316.125 (Rwy 12)
134.9 360.7 (Rwys 26R, 30)
ATIS
127.75
CLNC DEL
118.15
GND CON
133.0 257.6



DEPARTURE ROUTE DESCRIPTION

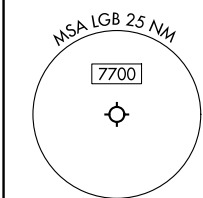
TAKEOFF RUNWAY 12: Climb on heading 121° to 560, then direct to cross OMMAA at 3000, then on track 196° to PLTAA, then on track 269° to AAYJY, then on track 350° to cross QMARY at 4000, then on track 312° to cross TOPMM at or above 2400 and at 200K, thence. . . .

TAKEOFF RUNWAY 26R: Climb on heading 256° to intercept course 302° to cross TOPMM at or above 2400 and at 200K, thence. . . .

TAKEOFF RUNWAY 30: Climb on heading 301° to intercept course 269° to cross TOPMM at or above 2400 and at 200K, thence. . . .

. . . .on (transition). Maintain 15000. Expect filed altitude 10 minutes after departure.

COREZ TRANSITION (TOPMM5.COREZ)
CSTRO TRANSITION (TOPMM5.CSTRO)

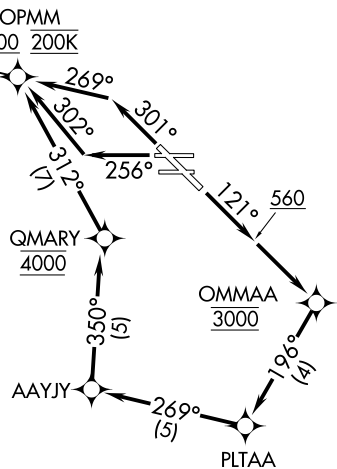


NOTE: Turbojet aircraft only.

TAKEOFF MINIMUMS

Rwy 12: Standard.
Rwy 26R: Standard with minimum climb of 255'/NM to 560.
Rwy 30: Standard with minimum climb of 250'/NM to 560.

NOTE: Chart not to scale.



SW-3, 11 JUN 2026 to 09 JUL 2026

SW-3, 11 JUN 2026 to 09 JUL 2026