

(CHATY5.CHATY) 25331
CHATY FIVE DEPARTURE

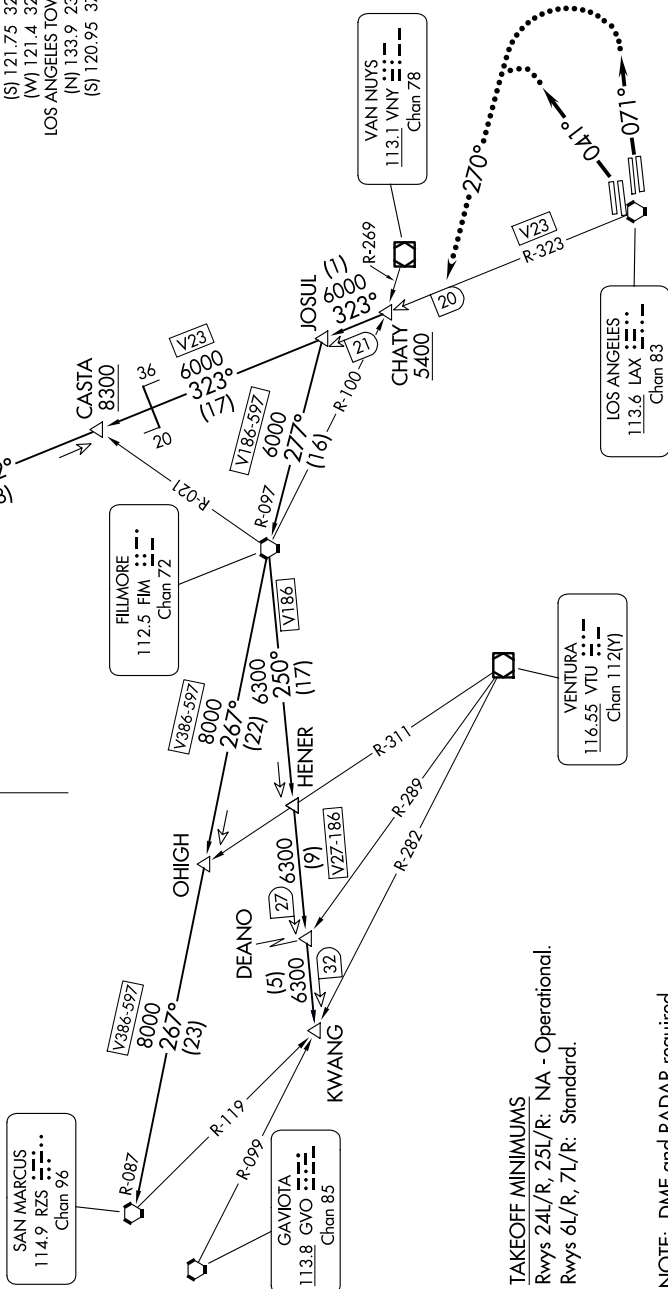
AL-237 (FAA)

LOS ANGELES INTL (LAX)
 LOS ANGELES, CALIFORNIA

SW-3, 11 JUN 2026 to 09 JUL 2026

**TOP ALTITUDE:
 ASSIGNED BY ATC**

SOCAL DEP CON
 125.2 323.275
 D-ATIS DEP
 135.65
 CLNC DEL
 120.35 327.0
 CPDLC
 GND CON
 (N) 121.65 327.0
 (S) 121.75 327.0
 (W) 121.4 327.0
 LOS ANGELES TOWER
 (N) 133.9 239.3
 (S) 120.95 379.1



TAKEOFF MINIMUMS

Rwys 24L/R, 25L/R: NA - Operational.
 Rwys 6L/R, 7L/R: Standard.

NOTE: DME and RADAR required.
 NOTE: Procedure for non turbojet aircraft only.
 NOTE: Chart not to scale.

(CONTINUED ON FOLLOWING PAGE)

SW-3, 11 JUN 2026 to 09 JUL 2026

(CHATY5.CHATY) 27APR17
CHATY FIVE DEPARTURE

LOS ANGELES, CALIFORNIA
 LOS ANGELES INTL (LAX)



DEPARTURE ROUTE DESCRIPTION

TAKEOFF RUNWAYS 6L/R: Climb heading 041° for vector to V23, thence. . . .

TAKEOFF RUNWAYS 7L/R: Climb heading 071° for vector to V23, thence. . . .

. . . .then on (transition) or (assigned route). Expect filed altitude 5 minutes after departure.

LOST COMMUNICATIONS

RUNWAYS 6L/R, 7L/R: If not in contact with departure control within 3 minutes after departure, turn left heading 270°, intercept V23 to CHATY INT and resume the CHATY FIVE DEPARTURE. Continue on course.

GORMAN TRANSITION (CHATY5.GMN): From over CHATY INT on LAX R-323 and GMN R-142 to GMN VORTAC.

HENER TRANSITION (CHATY5.HENER): From over CHATY INT on LAX R-323 to JOSUL, then on FIM R-097 to FIM VORTAC, then on FIM R-250 to HENER INT.

KWANG TRANSITION (CHATY5.KWANG): From over CHATY INT on LAX R-323 to JOSUL, then on FIM R-097 to FIM VORTAC, then on FIM R-250 to KWANG INT.

SAN MARCUS TRANSITION (CHATY5.RZS): From over CHATY INT on LAX R-323 to JOSUL, then on FIM R-097 to FIM VORTAC, then on FIM R-267 to OHIGH INT, then on RZS R-087 to RZS VORTAC.

SW-3, 11 JUN 2026 to 09 JUL 2026

SW-3, 11 JUN 2026 to 09 JUL 2026