

# DIRBY TWO ARRIVAL (RNAV)

AL-237 (FAA)

LOS ANGELES INTL (LAX)  
LOS ANGELES, CALIFORNIA

9200 UNR 60 01 9200 2000 NR 11 'E-WS

## ARRIVAL ROUTE DESCRIPTION

RDHOT TRANSITION (RDHOT.DIRBY2)

TCUPS TRANSITION (TCUPS.DIRBY2)

TILLT TRANSITION (TILLT.DIRBY2)

From DIRBY on track 082° to cross PHUNN at 14000, then on track 034° to cross SHHOW at 12000, then on track 346° to cross ZAPPP at or above 9000, then on track 346° to cross BUJIE at or below 8000, then on track 332° to cross SLI VORTAC at 7000 and at 210K, then on track 326° to cross TRNDO at 5000 and at 210K. Expect ILS or LOC RWY 25L or RNAV (RNP) Z RWY 25L.

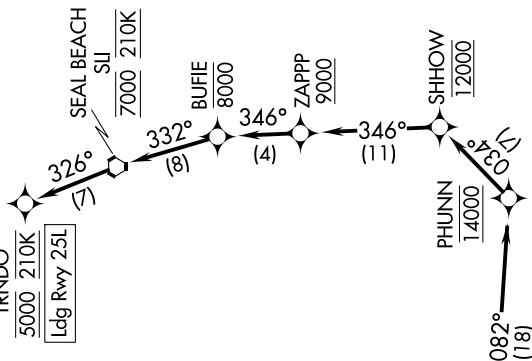
## LOST COMMUNICATIONS

In the event of lost communications: RNP arrivals proceed on the RNAV (RNP) Z RWY 25L approach. All other aircraft proceed on the ILS or LOC RWY 25L.

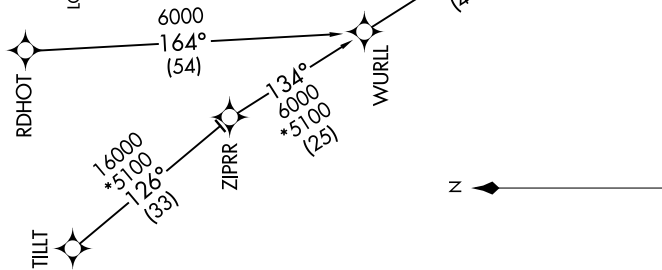
RNAV 1 - DME/DME/IRU or GPS.

RADAR required for non-GPS equipped aircraft.

TRNDO  
5000 210K  
Leg Rwy 25L



SOCAL APP CON  
127.4 387.025  
D-ATIS  
133.8  
LOS ANGELES TOWER  
133.9 239.3 (N)  
120.95 379.1 (S)



NOTE: Jet aircraft only.  
NOTE: Do not file - to be assigned by ATC.  
NOTE: Expect runway 25L unless otherwise assigned by ATC.

NOTE: Chart not to scale.

# DIRBY TWO ARRIVAL (RNAV)

LOS ANGELES, CALIFORNIA  
LOS ANGELES INTL (LAX)

SW-3, 11 JUN 2026 to 09 JUL 2026