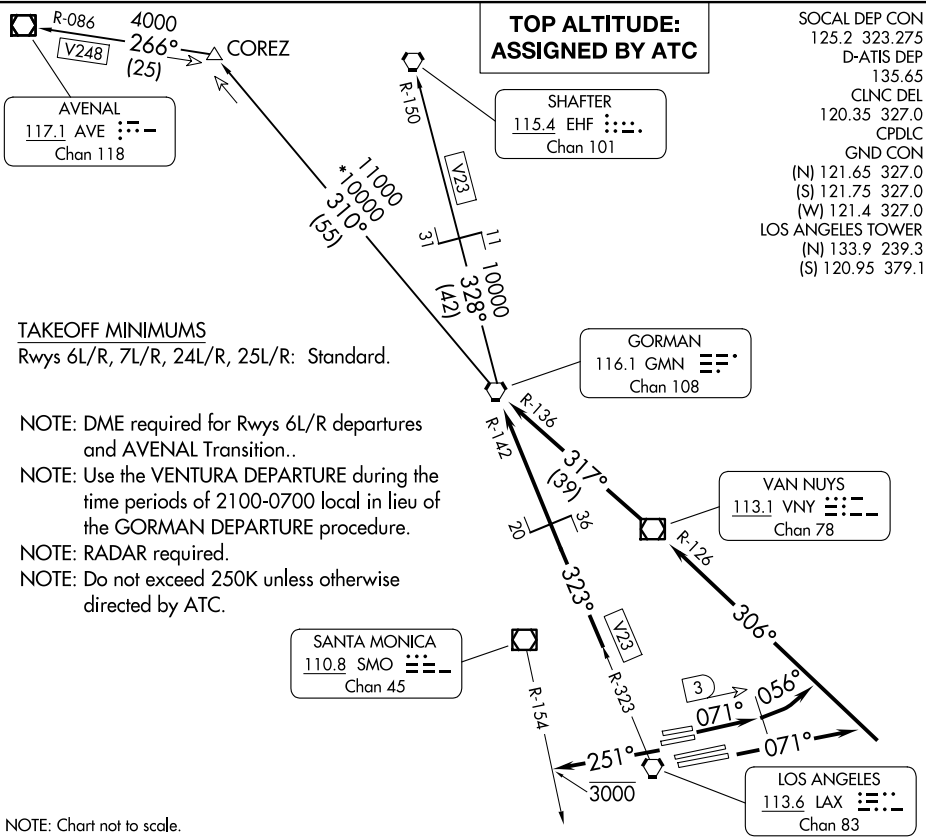


(GMN7.GMN) 25331

# GORMAN SEVEN DEPARTURE

AL-237 (FAA)

LOS ANGELES INTL (LAX)  
LOS ANGELES, CALIFORNIA



### TAKEOFF MINIMUMS

Rwys 6L/R, 7L/R, 24L/R, 25L/R: Standard.

NOTE: DME required for Rwys 6L/R departures and AVENAL Transition..

NOTE: Use the VENTURA DEPARTURE during the time periods of 2100-0700 local in lieu of the GORMAN DEPARTURE procedure.

NOTE: RADAR required.

NOTE: Do not exceed 250K unless otherwise directed by ATC.

NOTE: Chart not to scale.

### DEPARTURE ROUTE DESCRIPTION

**TAKEOFF RUNWAYS 6L/R:** Climb on heading 071° until LAX VORTAC 3 DME, then turn left heading 056° for vector to join VNY R-126 to VNY VOR/DME, then on VNY R-317 and GMN R-136 to GMN VORTAC, thence. . .

**TAKEOFF RUNWAYS 7L/R:** Climb on heading 071° for vector to join VNY R-126 to VNY VOR/DME, then on VNY R-317 and GMN R-136 to GMN VORTAC, thence. . .

**TAKEOFF RUNWAYS 24L/R, 25L/R:** Climb on heading 251° to cross SMO R-154 at or below 3000, then on RADAR vector to LAX R-323 and GMN R-142 to GMN VORTAC, thence. . .

. . . on (transition) or (assigned route). All aircraft expect further clearance to filed flight level 5 minutes after departure.

**LOST COMMUNICATIONS:** If not in contact with Departure Control within five minutes after departure, climb to FL230 or filed altitude whichever is lower. Aircraft filing FL240 or above climb to filed altitude ten minutes after departure.

**AVENAL TRANSITION (GMN7.AVE):** From over GMN VORTAC on GMN R-310 to COREZ then on AVE R-086 to AVE VOR/DME.

**SHAFTER TRANSITION (GMN7.EHF):** From over GMN VORTAC on GMN R-328 and EHF R-150 to EHF VORTAC.

# GORMAN SEVEN DEPARTURE

(GMN7.GMN) 17AUG17

LOS ANGELES, CALIFORNIA  
LOS ANGELES INTL (LAX)

SW-3, 11 JUN 2026 to 09 JUL 2026

SW-3, 11 JUN 2026 to 09 JUL 2026