

9200 200 60 01 8202 N000 11 'E-MS

SOCAL APP CON  
124.5 235.975  
D-ATIS ARR  
133.8  
LOS ANGELES TOWER  
(N) 133.9 239.3  
(S) 120.95 379.1

ARRIVAL ROUTE DESCRIPTION

TOKIO TRANSITION (TOKIO.HUULL2)

From HUULL on track 079° to cross GNZZO between 13000 and 14000, then on track 079° to cross RYDRR at 11000 and at 250K, then on track 103° to cross KEVI at or above 10000, then on track 103° to cross BAYST at or above 9000 and at 240K, then on track 084° to cross CLIFY between 8000 and 9000, then on track 084° to cross DAHJR at 6000 and at 210K, then on track 066° to cross GADDO at 6000 and at 210K, then on track 071° to cross GADDO at 6000, then on track 071°. Expect RADAR vectors to final approach course.

LOST COMMUNICATIONS

In the event of lost communications: RNP LAX arrivals proceed on the RNAV (RNP) Z RWY 24R approach at DAHJR or proceed on the ILS or LOC RWY 24R..

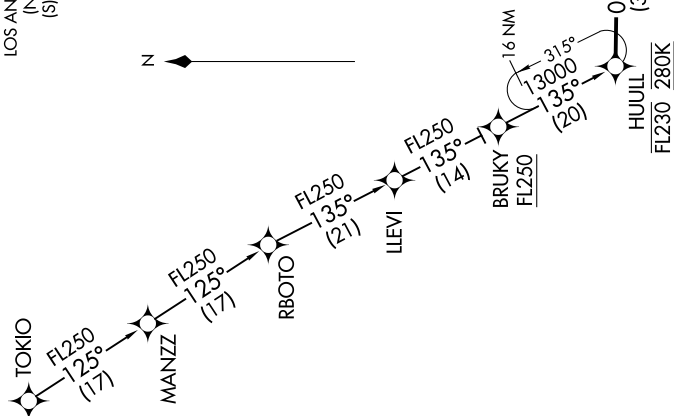
NOTE: RADAR required.

NOTE: RNAV 1.

NOTE: DME/DME/IRU or GPS required.

NOTE: Turbojet aircraft only.

NOTE: Procedure is only for use when Los Angeles landing west.  
NOTE: Expect Runway 24R unless otherwise assigned by ATC.



NOTE: Chart not to scale.