

LOC/DME I-OSS <b>108.5</b> Chan <b>22</b>	APP CRS <b>251°</b>	Rwy Ldg <b>8926</b> TDZE <b>122</b> Apt Elev <b>128</b>
---	------------------------	---

# ILS RWY 24R (CAT II & III)

LOS ANGELES INTL (LAX)

From CRCUS, SEAVU: RNAV 1-GPS required. DME or RADAR required.

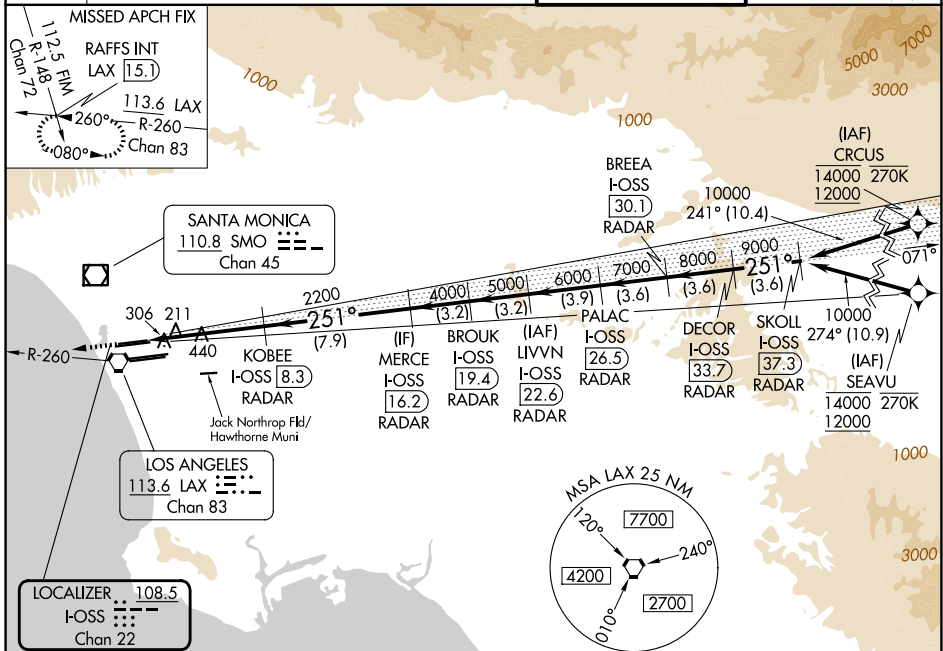
ALSF-2

MISSED APPROACH: Climb to 2000 on heading 251° and LAX VORTAC R-260 to RAFFS INT/LAX 15.1 DME and hold.



Simultaneous approach authorized with HHR. Simultaneous approach authorized. RVR 1000 authorized with specific OPSPEC, MSPEC, or LOA approval and use of autoland or HUD to touchdown.

D-ATIS <b>133.8</b>	SOCAL APP CON <b>124.3 363.2</b> (APCH from W) <b>124.9 269.0</b> (090°-224°) <b>124.5 235.975</b> (225°-044°) <b>128.5 360.7</b> (045°-089°)	LOS ANGELES TOWER <b>133.9 239.3</b> (N) <b>120.95 379.1</b> (S)	GND CON <b>121.65 327.0</b> (N) <b>121.75 327.0</b> (S) <b>121.4 327.0</b> (W)
------------------------	---	--	---



SW-3, 11 JUN 2026 to 09 JUL 2026

SW-3, 11 JUN 2026 to 09 JUL 2026

ELEV 128	TDZE 122	2000 hdg 251°	LAX R-260	RAFFS INT	VGSI and ILS glidepath not coincident (VGSI Angle 3.00/TCH 73).	DECOR I-OSS (33.7) RADAR	SKOLL I-OSS (37.3) RADAR			
		KOBEE I-OSS (8.3) RADAR		MERCE I-OSS (16.2) RADAR	BROUK I-OSS (19.4) RADAR	LIVVN I-OSS (22.6) RADAR	PALAC I-OSS (26.5) RADAR	BREA I-OSS (30.1) RADAR	251°	10000
		10267	6.4 NM	7.9 NM	3.2 NM	3.2 NM	3.9 NM	3.6 NM	3.6 NM	3.6 NM
		CATEGORY	A	B	C	D				
		S-ILS 24R	CAT II RA 118/10 100 DA 222							
		S-ILS 24R	CAT III RVR 06							
<p>TDZ/CL Rwy 6R, 7L, 24R, and 25L HIRL all Rwy</p> <p>GS 3.00° TCH 55</p>										
<p><b>CATEGORY II &amp; III ILS - SPECIAL AIRCREW &amp; AIRCRAFT CERTIFICATION REQUIRED</b></p>										