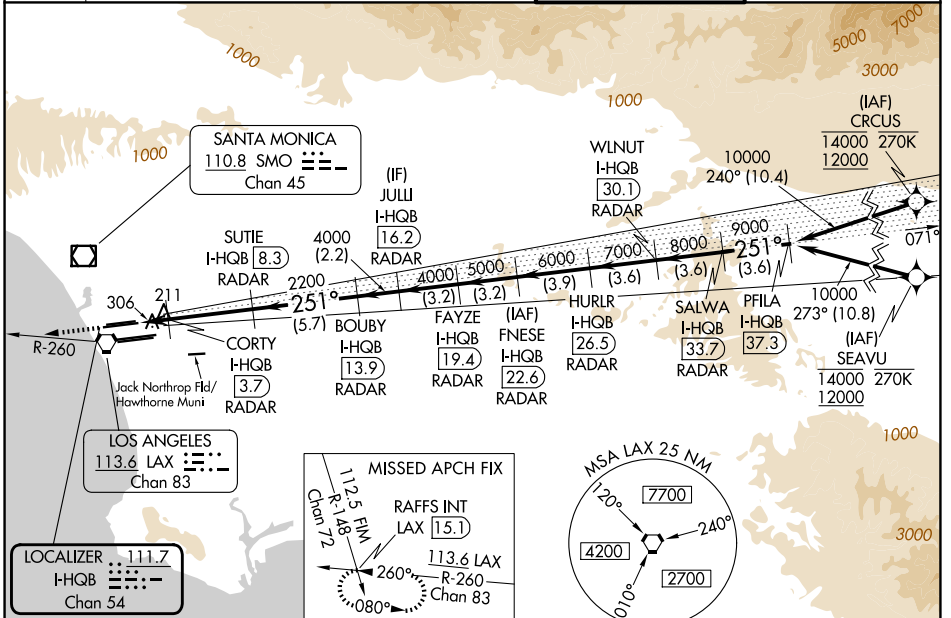


LOC/DME I-HQ	APP CRS	Rwy Ldg	24L	24R
111.7	251°		9483	8926
Chan 54		TDZE	123	122
		Apt Elev	128	128

ILS or LOC RWY 24L

LOS ANGELES INTL (LAX)

RNAV 1-GPS or RADAR required for procedure entry. DME or RADAR required. From CRCUS: RNAV 1-GPS required. From SEAVU: RNAV 1-GPS required.		MALSR Rwy 24L 	ALSF-2 Rwy 24R 	MISSED APPROACH: Climb to 2000 on heading 251° and LAX VORTAC R-260 to RAFFS INT/LAX 15.1 DME and hold.
Simultaneous approach authorized with HHR. Inop table does not apply to Sidestep Rwy 24R Cat A and B. Simultaneous approach authorized. LOC procedure NA during simultaneous operations with HHR LOC RWY 25. For inop ALS, increase Sidestep 24R Cat C visibility to 1½SM. For inop ALS, increase S-LOC 24L Cat C/D visibility to RVR 5500. #RVR 1800 authorized with use of FD or AP or HUD to DA.				
D-ATIS 133.8	SOCAL APP CON 124.3 363.2 (APCH from W) 124.9 269.0 (090°-224°) 124.5 235.975 (225°-044°) 128.5 360.7 (045°-089°)	LOS ANGELES TOWER 133.9 239.3 (N) 120.95 379.1 (S)	GND CON 121.65 327.0 (N) 121.75 327.0 (S) 121.4 327.0 (W)	



ELEV 128	TDZE 24L 123	TDZE 24R 122	VGSI and ILS glidepath not coincident (VGSI Angle 3.00/TCH 79).		
LAX R-260 RAFFS INT MSA LAX 25 NM 7700 4200 2700		SALWA I-HQ 37.3 PFILA I-HQ 37.3 WLNUT I-HQ 30.1 HURLR I-HQ 26.5 FAYZE I-HQ 19.4 BOUBY I-HQ 13.9 JULI I-HQ 16.2 SUTIE I-HQ 8.3 CORTY I-HQ 3.7 BOUBY I-HQ 13.9 FAYZE I-HQ 19.4 HURLR I-HQ 26.5 SALWA I-HQ 33.7 PFILA I-HQ 37.3			
*LOC only. I-HQ 1.9 I-HQ 2.9 I-HQ 3.7 I-HQ 8.3 I-HQ 13.9 I-HQ 16.2 I-HQ 19.4 I-HQ 22.6 I-HQ 26.5 I-HQ 30.1 I-HQ 33.7 I-HQ 37.3		2000 2200 4000 4000 5000 6000 7000 8000 10000			
CATEGORY A S-ILS 24L# 323/24 S-LOC 24L 500/24 377 (400-½)		CATEGORY B CATEGORY C CATEGORY D 200 (200-½) 500/35 377 (400-¾)			
TDZ/CL Rwy 6R, 7L, 24R, and 25L HIRL all Rwy FAF to MAP 6.4 NM		GS 3.00° TCH 59 SIDESTEP 24R 500/55 378 (400-1) 500-1½ 378 (400-1½)			
Knots	60	90	120	150	180
Min:Sec	6:24	4:16	3:12	2:34	2:08

SW-3, 11 JUN 2026 to 09 JUL 2026

SW-3, 11 JUN 2026 to 09 JUL 2026