

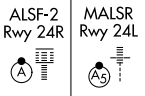
LOC/DME I-OSS 108.5 Chan 22	APP CRS 251°	Rwy Ldg 24R 8926 9483 TDZE 122 123 Apt Elev 128 128
---	------------------------	--

ILS or LOC RWY 24R

LOS ANGELES INTL (LAX)

From CRCUS, SEAVU: RNAV 1-GPS required. DME or RADAR required.

Simultaneous approach authorized with HHR. LOC procedure NA during simultaneous operations with HHR LOC RWY 25. Simultaneous approach authorized. For inop ALS, increase S-LOC 24R Cat C/D visibility to RVR 5500.

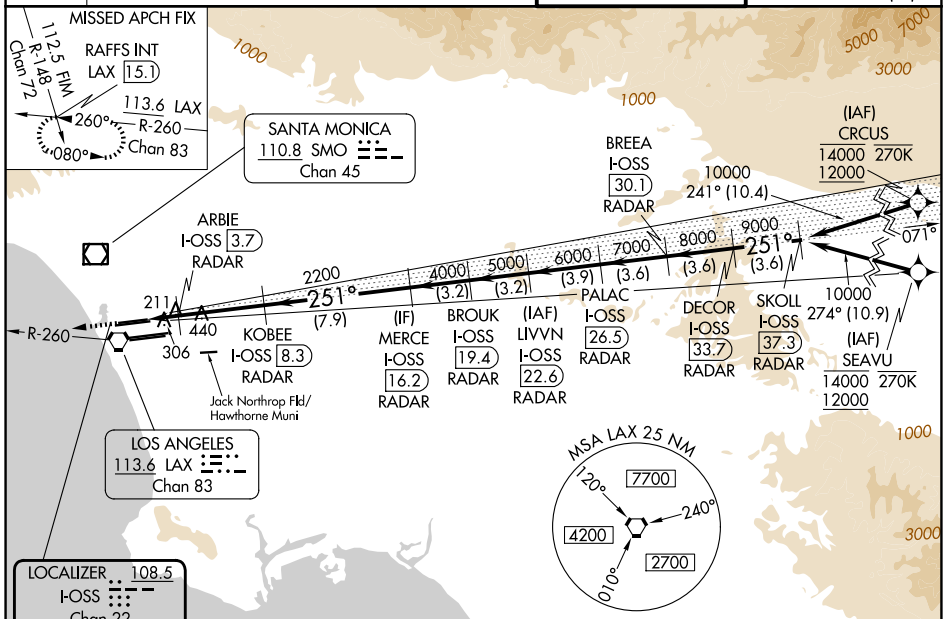


MISSED APPROACH: Climb to 2000 on heading 251° and LAX VORTAC R-260 to RAFFS INT/LAX 15.1 DME and hold.

D-ATIS 133.8	SOCAL APP CON			
	124.3 363.2 (APCh from W)	124.9 269.0 (090°-224°)	128.5 360.7 (045°-089°)	

LOS ANGELES TOWER	
133.9 239.3 (N)	120.95 379.1 (S)

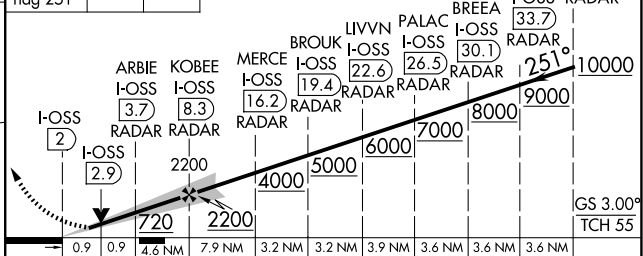
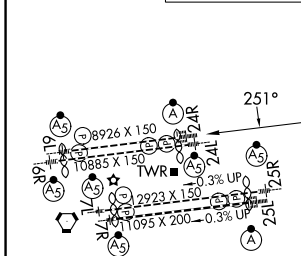
GND CON	
121.65 327.0 (N)	121.75 327.0 (S)
121.4 327.0 (W)	



ELEV 128	TDZE 24R 122	TDZE 24L 123
----------	--------------	--------------

↑ 2000
hdg 251°

VGSI and ILS glidepath not coincident (VGSI Angle 3.00/TCH 73).



TDZ/CL Rwy 6L, 7L, 24R, and 25L HIRL all Rwy	FAF to MAP 6.4 NM
Knots 60 90 120 150 180	Min:Sec 6:24 4:16 3:12 2:34 2:08
S-ILS 24R	322/18 200 (200-½)
S-LOC 24R	480/24 358 (400-½) 480/30 358 (400-¾)
SIDESTEP 24L	500/55 377 (400-1) 500-1½ 377 (400-1½)

SW-3, 11 JUN 2026 to 09 JUL 2026

SW-3, 11 JUN 2026 to 09 JUL 2026