

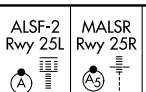
LOC/DME I-LAX	APP CRS	Rwy Ldg	25L	25R
109.9	251°		11095	11134
Chan 36		TDZE	104	104
		Apt Elev	128	128

ILS or LOC RWY 25L

LOS ANGELES INTL (LAX)

RNP APCH - GPS. From CLPUR or CRUCS or SEAVU or TRNDO. DME or RADAR required.

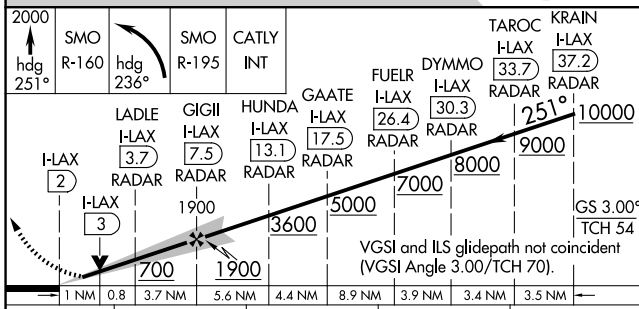
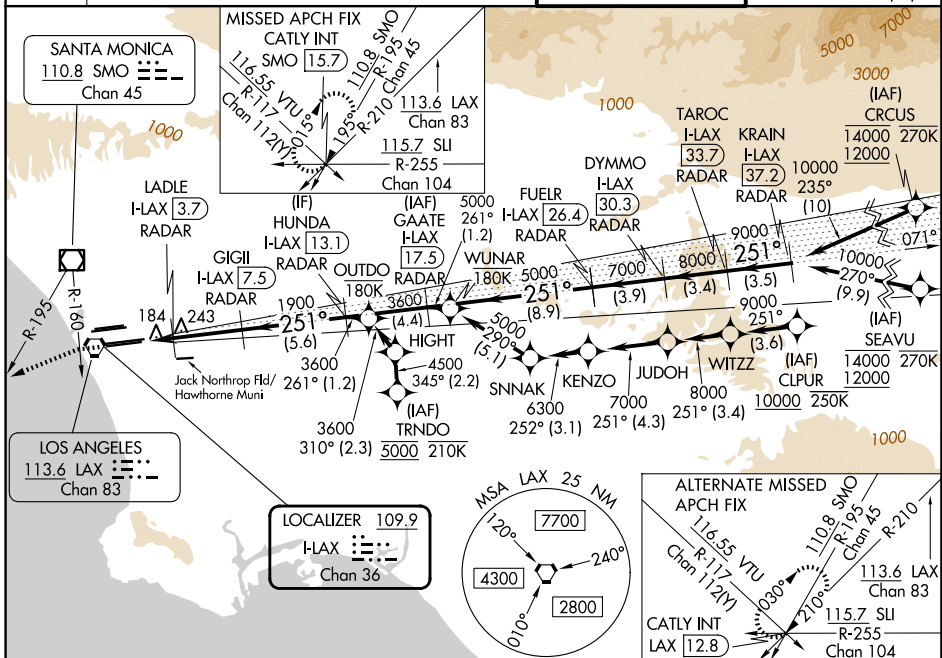
Simultaneous approach authorized. Simultaneous approach authorized with HHR.



MISSED APPROACH: Climb to 2000 on heading 251° until crossing the SMO R-160, then left turn on heading 236° and on the SMO R-195 to CATLY INT/SMO 15.7 DME and hold.

D-ATIS	SOCAL APP CON			
133.8	124.3 363.2 (APCH from W)	124.9 269.0 (090°-224°)		
	124.5 235.975 (225°-044°)	128.5 360.7 (045°-089°)		

LOS ANGELES TOWER	GND CON
133.9 239.3 (N)	121.65 327.0 (N)
120.95 379.1 (S)	121.75 327.0 (S)
	121.4 327.0 (W)



S-ILS 25L	304/18 200 (200-1/2)			
S-LOC 25L	480/24	376 (400-1/2)	480/35	376 (400-3/4)
SIDESTEP 25R	480/55	376 (400-1)	480-1 1/2	376 (400-1 1/2)
TDZ/CL Rwy's 6R, 7L, 24R, and 25L HIRL all Rwy's FAF to MAP 5.5 NM Knots: 60 90 120 150 180 Min:Sec: 5:30 3:40 2:45 2:12 1:50				

SW-3, 11 JUN 2026 to 09 JUL 2026

SW-3, 11 JUN 2026 to 09 JUL 2026