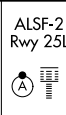


LOC/DME I-CFN 111.1 Chan 48	APP CRS 251°	Rwy Ldg 25R 25L 11134 11095 TDZE 104 104 Apt Elev 128 128
--	------------------------	---

ILS or LOC RWY 25R

LOS ANGELES INTL (LAX)

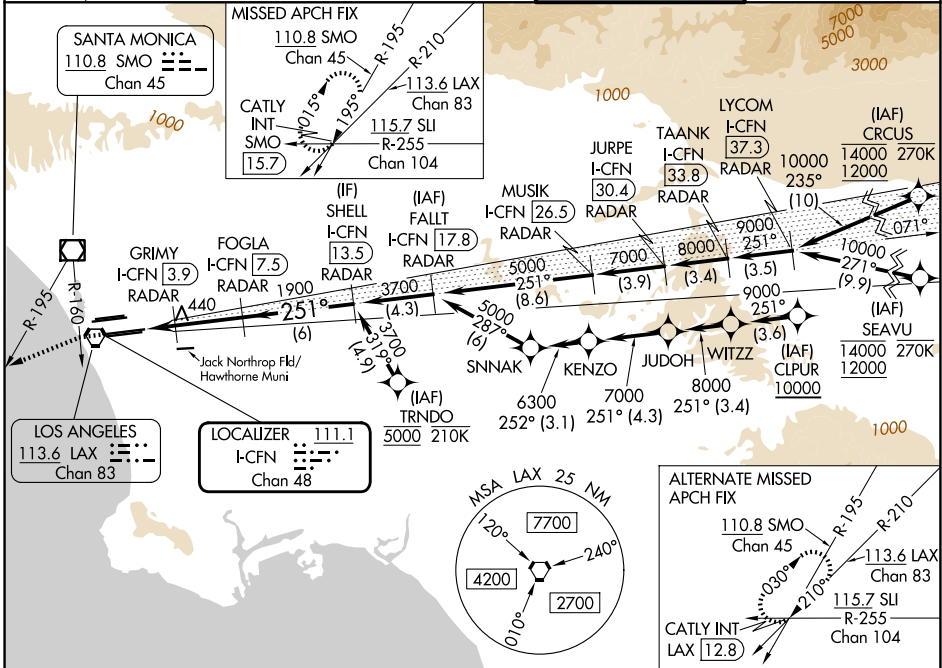
From CRCUS, SEAVU, TRNDO, CLPUR, CLPUR: RNAV 1-GPS required.
DME or RADAR required.



MISSED APPROACH: Climb to 2000 on heading 251° until crossing SMO R-160 then left turn on heading 236° and SMO VOR/DME R-195 to CATLY INT/SMO 15.7 DME and hold.

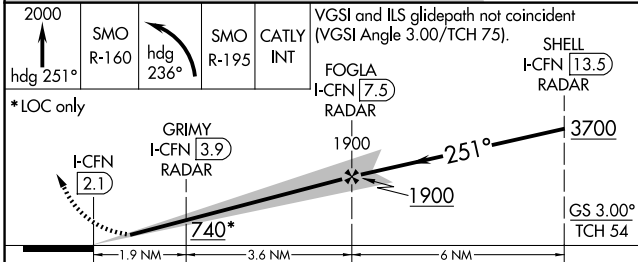
Simultaneous approach authorized. Simultaneous approach authorized with HHR. For inop ALS increase Sidestep 25L Cat C visibility to 1½ SM. #RVR 1800 authorized with use of FD or AP or HUD to DA.

D-ATIS 133.8	SOCAL APP CON 124.3 363.2 (APCH from W) 124.9 269.0 (090°-224°) 124.5 235.975 (225°-044°) 128.5 360.7 (045°-089°)	LOS ANGELES TOWER 133.9 239.3 (N) 120.95 379.1 (S)	GND CON 121.65 327.0 (N) 121.75 327.0 (S) 121.4 327.0 (W)
------------------------	---	--	---

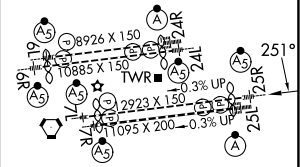


SW-3, 11 JUN 2026 to 09 JUL 2026

SW-3, 11 JUN 2026 to 09 JUL 2026



ELEV 128	TDZE 25R 104	TDZE 25L 104
----------	--------------	--------------



CATEGORY	A	B	C	D
S-ILS 25R#	304/24 200 (200-½)			
S-LOC 25R	700/24 596 (600-½)	700-1¼ 596 (600-1¼)		
SIDESTEP 25L	700/55 596 (600-1)	700-1¼ 596 (600-1¼)		700-1½ 596 (600-1½)

TDZ/CL Rwyys 6R, 7L, 24R, and 25L	HIRL all Rwyys				
FAF to MAP 5.5 NM					
Knots	60	90	120	150	180
Min:Sec	5:30	3:40	2:45	2:12	1:50