

LOC/DME I-GPE 111.7 Chan 54	APP CRS 071°	Rwy Ldg 6R 9748 6L 8566 TDZE 116 119 Apt Elev 128 128
---	------------------------	---

ILS or LOC RWY 6R

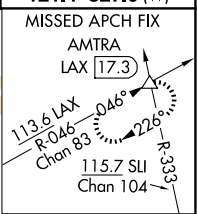
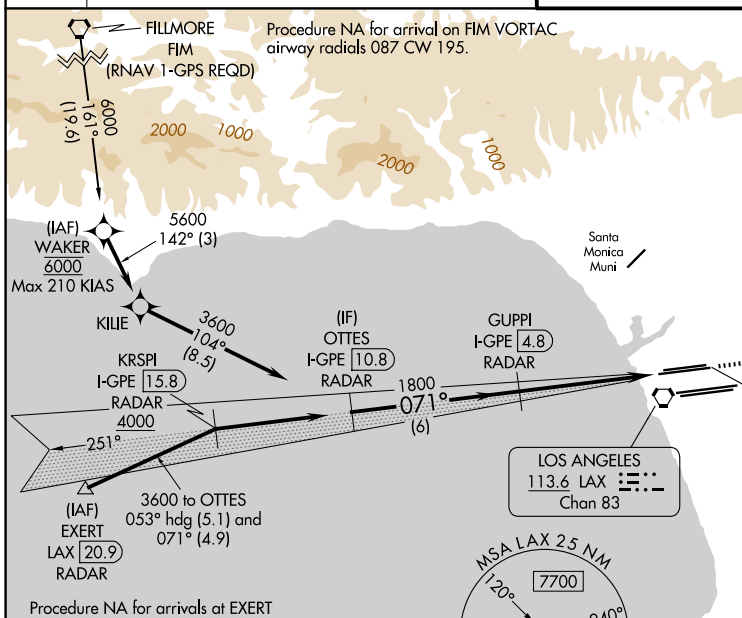
LOS ANGELES INTL (LAX)

Simultaneous approach authorized. For inop ALS, increase S-LOC 6R Cat C/D visibility to RVR 5500. Inop table does not apply to Sidestep 6L Cats A and B.
RVR 1800 authorized with use of FD or AP or HUD to DA.



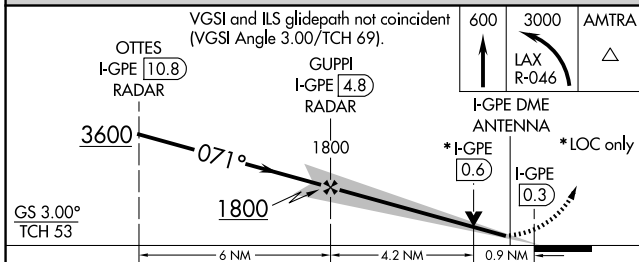
MISSED APPROACH: Climb to 600 then climbing left turn to 3000 on LAX VORTAC R-046 to AMTRA INT/ LAX 17.3 DME and hold.

D-ATIS 133.8	SOCAL APP CON		LOS ANGELES TOWER		GND CON	
	124.3 363.2 (APCh from W)	124.9 269.0 (090°-224°)	133.9 239.3 (N)	121.65 327.0 (N)	121.75 327.0 (S)	121.4 327.0 (W)
	124.5 235.975 (225°-044°)	128.5 360.7 (045°-089°)	120.95 379.1 (S)			

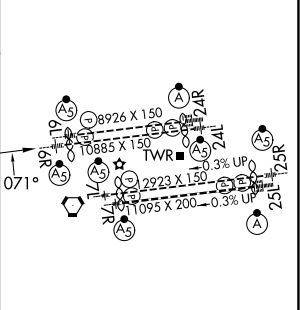


DME or RADAR REQUIRED

Procedure NA for arrivals at EXERT on V25 southwest bound, V27 northwest bound.



ELEV 128	TDZE 6R 116
	TDZE 6L 119



CATEGORY	A	B	C	D
S-ILS 6R#	316/24 200 (200-1/2)			
S-LOC 6R	460/24	344 (400-1/2)	460/30	344 (400-5/8)
SIDESTEP 6L	460/55 341 (400-1)			460-1 1/2 341 (400-1 1/2)

TDZ/CL Rwy 6R, 7L, 24R, and 25L	HIRL all Rwys				
FAF to MAP 5.1 NM					
Knots	60	90	120	150	180
Min:Sec	5:06	3:24	2:33	2:02	1:42

SW-3, 11 JUN 2026 to 09 JUL 2026

SW-3, 11 JUN 2026 to 09 JUL 2026