

LOC/DME I-AS 111.1 Chan 48	APP CRS 071°	Rwy Ldg 11259 11095	7L 128	7R 128
		TDZE 128 128		
		Apt Elev 128 128		

ILS or LOC RWY 7L

LOS ANGELES INTL (LAX)

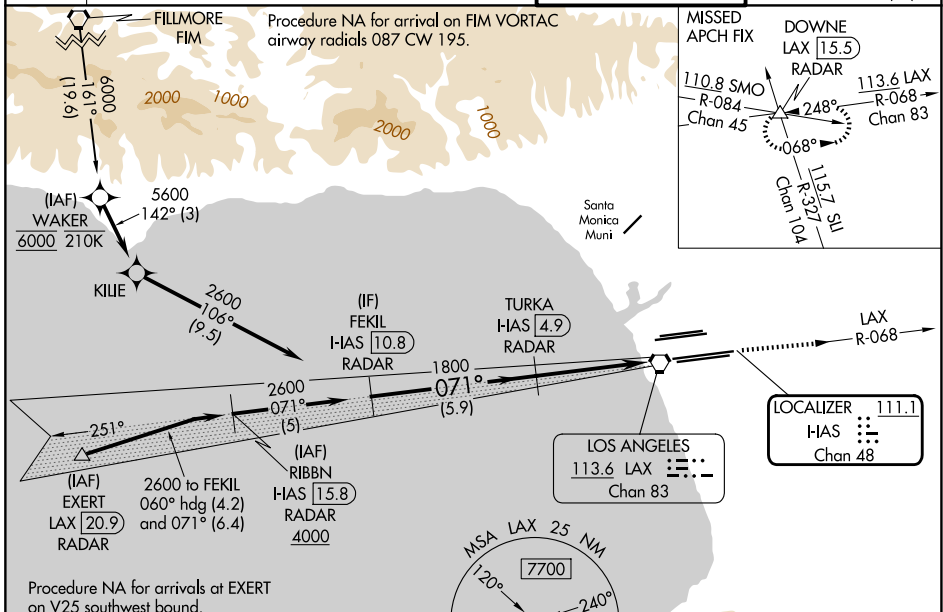
From FIM VORTAC: RNAV 1-GPS required. DME or RADAR required.

Simultaneous approach authorized. Autopilot coupled approach NA below 925. Inop table does not apply to Sidestep Rwy 7R Cats A and B.

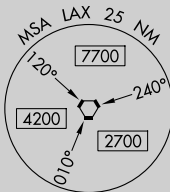


MISSED APPROACH: Climb to 3000 on LAX VORTAC R-068 to DOWNE INT/LAX 15.5 DME/RADAR and hold.

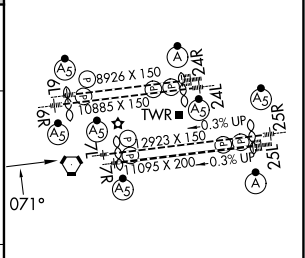
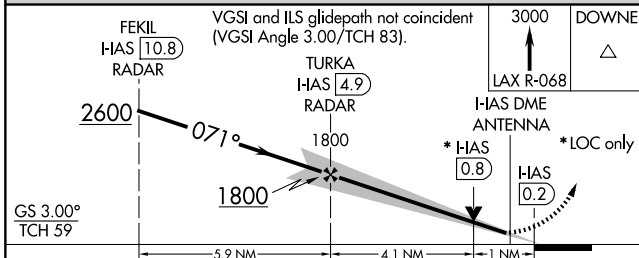
D-ATIS 133.8	SOCAL APP CON		LOS ANGELES TOWER		GND CON
124.3 363.2 (APCH from W)	124.9 269.0 (090°-224°)	124.5 235.975 (225°-044°)	133.9 239.3 (N)	121.65 327.0 (N)	121.75 327.0 (S)
	128.5 360.7 (045°-089°)		120.95 379.1 (S)	121.4 327.0 (W)	



Procedure NA for arrivals at EXERT on V25 southwest bound.



ELEV 128	D TDZE 7L 128	TDZE 7R 128
----------	----------------------	-------------



CATEGORY	A	B	C	D
S-ILS 7L	336/18 208 (300-1/2)			
S-LOC 7L	520/24	392 (400-1/2)	520/35	392 (400-3/8)
SIDESTEP 7R	520/55 392 (400-1)			520-1/2 392 (400-1/2)

TDZ/CL Rwy 6R, 7L, 24R, and 25L	HIRL all Rwy				
FAF to MAP 5.1 NM					
Knots	60	90	120	150	180
Min:Sec	5:06	3:24	2:33	2:02	1:42

SW-3, 11 JUN 2026 to 09 JUL 2026

SW-3, 11 JUN 2026 to 09 JUL 2026