

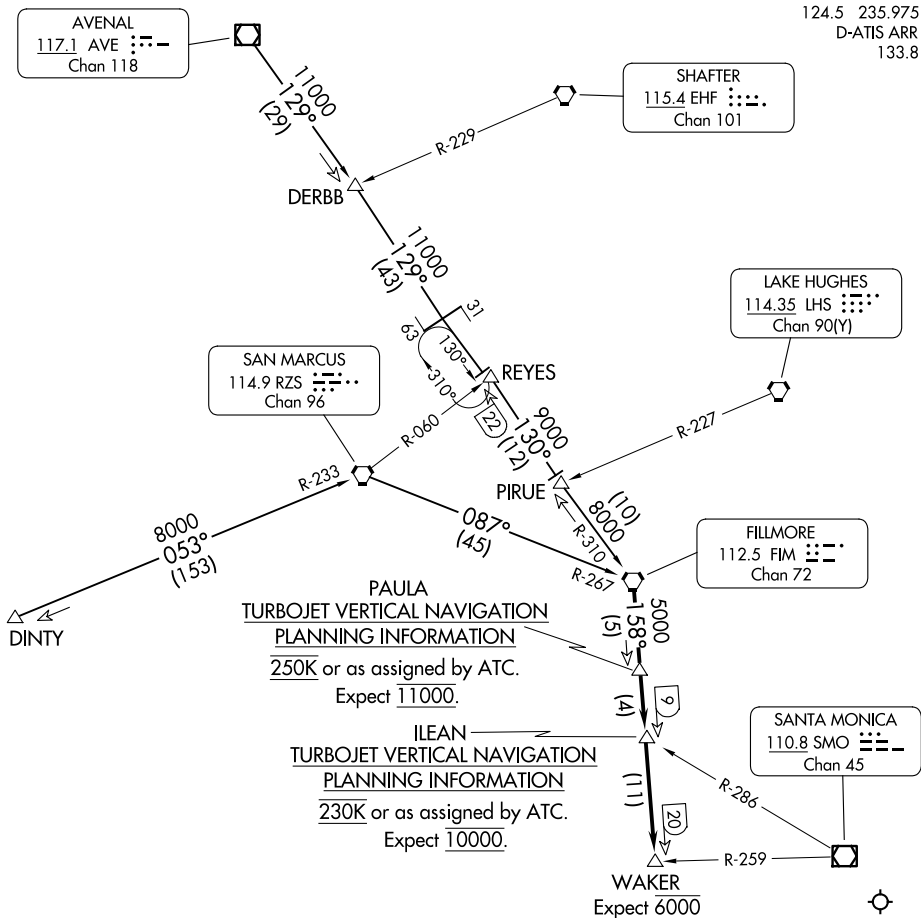
MOORPARK FOUR ARRIVAL

AL-237 (FAA)

LOS ANGELES INTL (LAX)

LOS ANGELES, CALIFORNIA

SOCAL APP CON
124.5 235.975
D-ATIS ARR
133.8



PAULA TURBOJET VERTICAL NAVIGATION PLANNING INFORMATION

250K or as assigned by ATC.
Expect 11000.

ILEAN TURBOJET VERTICAL NAVIGATION PLANNING INFORMATION

230K or as assigned by ATC.
Expect 10000.

NOTE: DME or RADAR required.

NOTE: Chart not to scale.

ARRIVAL ROUTE DESCRIPTION

AVENAL TRANSITION (AVE.MOOR4): From over AVE VOR/DME on AVE R-129 and FIM R-310 to FIM VORTAC. Thence. . .

DERBB TRANSITION (DERBB.MOOR4): From over DERBB INT on AVE R-129 and FIM R-310 to FIM VORTAC. Thence. . .

DINTY TRANSITION (DINTY.MOOR4): From over DINTY INT on RZS R-233 to RZS VORTAC. Then on RZS R-087 and FIM R-267 to FIM VORTAC. Thence. . .

. . . From over FIM VORTAC via FIM R-158 to WAKER INT. For Runways 6L/R or 7L/R: From WAKER INT expect vector to final approach course for Los Angeles Intl Airport.

MOORPARK FOUR ARRIVAL

SW-3, 11 JUN 2026 to 09 JUL 2026

SW-3, 11 JUN 2026 to 09 JUL 2026