

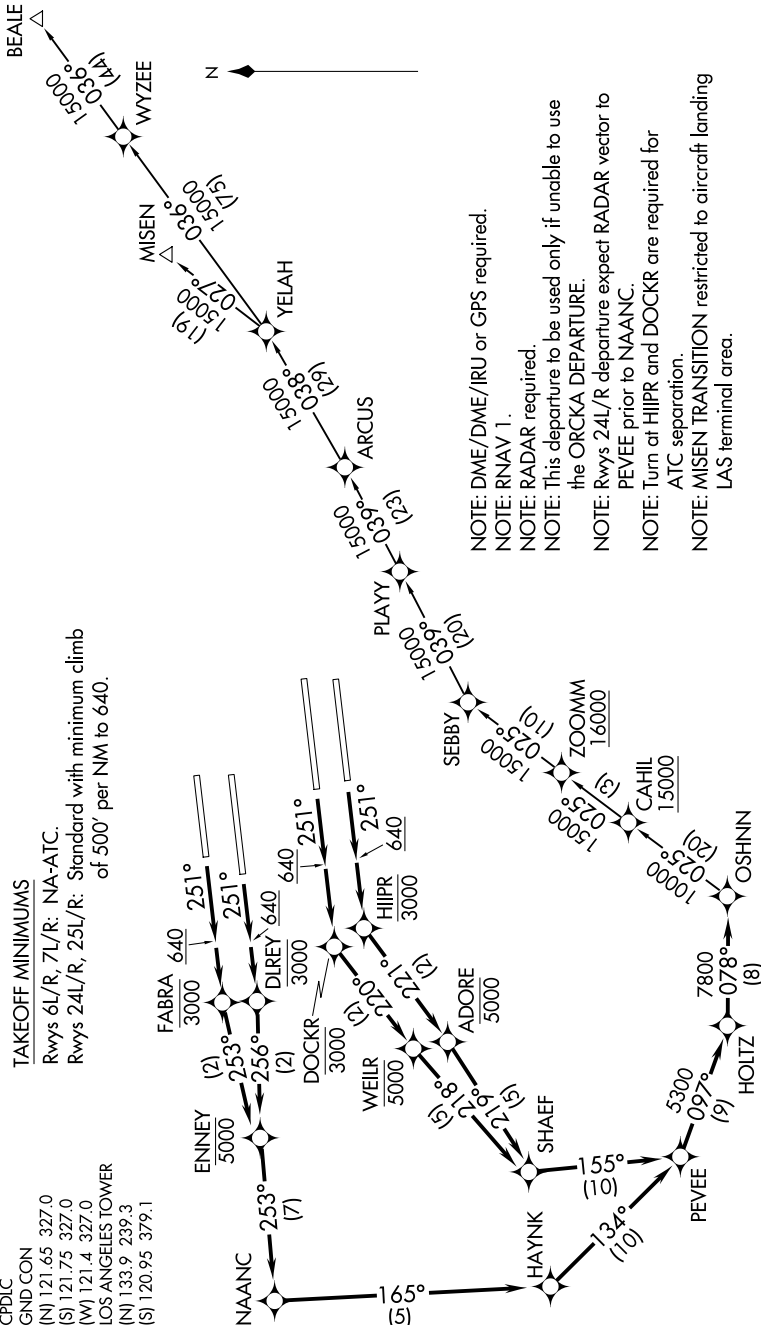
9200 UN 60 01 0206 UN 11 '8-WS

**TOP ALTITUDE:
17000**

TAKEOFF MINIMUMS

Rwys 6L/R, 7L/R: NA-ATC.
Rwys 24L/R, 25L/R: Standard with minimum climb
of 500' per NM to 640.

- SOCAL DEP CON 124.3 363.2
- D-ATIS DEP 135.65
- CLINC DEL 120.35 327.0
- CPBLC
- GND CON (N) 121.65 327.0
- (S) 121.75 327.0
- (W) 121.4 327.0
- LOS ANGELES TOWER (N) 133.9 239.3
- (S) 120.95 379.1



NOTE: DME/DME/IRU or GPS required.

NOTE: RNAV 1.

NOTE: RADAR required.

NOTE: This departure to be used only if unable to use the ORCA DEPARTURE.

NOTE: Rwys 24L/R departure expect RADAR vector to PEVEE prior to NAANC.

NOTE: Turn at HJIPR and DOCKR are required for ATC separation.

NOTE: MISEN TRANSITION restricted to aircraft landing LAS terminal area.

(CONTINUED ON FOLLOWING PAGE)

NOTE: Chart not to scale.



DEPARTURE ROUTE DESCRIPTION

TAKEOFF RUNWAY 24L: Climb on heading 251° to 640, then climb direct to cross DLREY at or below 3000, then on track 256° to cross ENNEY at or below 5000, then on depicted route to OSHNN, thence. . . .

TAKEOFF RUNWAY 24R: Climb on heading 251° to 640, then climb direct to cross FABRA at or below 3000, then on track 253° to cross ENNEY at or below 5000, then on depicted route to OSHNN, thence. . . .

TAKEOFF RUNWAY 25L: Climb on heading 251° to 640, then climb direct to cross HIIPR at or below 3000, then on track 221° to cross ADORE at or below 5000, then on depicted route to OSHNN, thence. . . .

TAKEOFF RUNWAY 25R: Climb on heading 251° to 640, then climb direct to cross DOCKR at or below 3000, then on track 220° to cross WEILR at or below 5000, then on depicted route to OSHNN, thence. . . .

. . . .on (transition). Maintain 17000. Expect filed altitude five minutes after departure.

BEALE TRANSITION (OSHNN1.BEALE)

MISEN TRANSITION (OSHNN1.MISEN)

SW-3, 11 JUN 2026 to 09 JUL 2026

SW-3, 11 JUN 2026 to 09 JUL 2026