

RNAV (RNP) Z RWY 24L


LOS ANGELES INTL (LAX)

APP CRS	Rwy Ldg	9483
251°	TDZE	123
	Apt Elev	128

RNP AR APCH.

Simultaneous approach authorized. Simultaneous approach authorized with HHR.
 For uncompensated Baro-VNAV systems, procedure NA below 5°C or above 54°C. For inop ALS, increase RNP 0.15 all Cats visibility to 1½ SM.

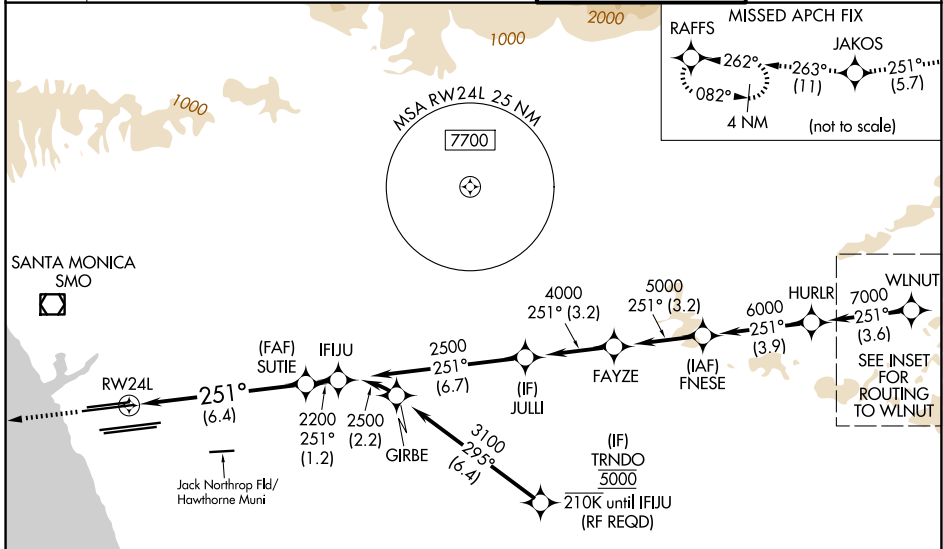
MALSRR



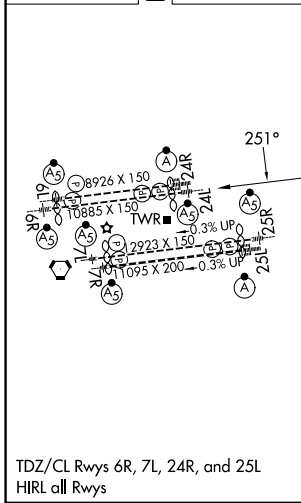
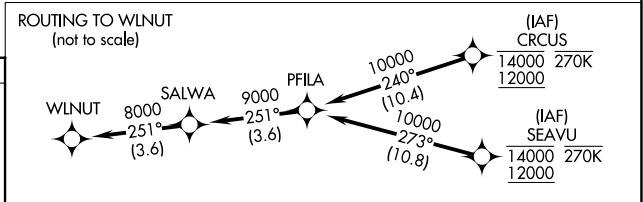
MISSED APPROACH: Climb to 2000 on track 251° to JAKOS and track 263° to RAFFS and hold.

D-ATIS	SOCAL APP CON			LOS ANGELES TOWER	GND CON
	124.3	363.2 (APCH from W)	124.9 269.0 (090°-224°)		
133.8	124.5	235.975 (225°-044°)	128.5 360.7 (045°-089°)	120.95 379.1 (S)	121.75 327.0 (W)

MISSED APCH FIX	
RAFFS	JAKOS
262° 082°	263° 251°
(11)	(5.7)
4 NM (not to scale)	



ELEV	128	D	TDZE	123
------	------------	----------	------	------------



2000	JAKOS	fr 263°	RAFFS	See planview for multiple IF locations.	SUTIE	IFJU
tr 251°					2200	2500
VGSIs and RNAV glidepath not coincident (VGSIs Angle 3.00/TCH 79).						
RWY 24L		6.4 NM			1.2 NM	GP 3.00° TCH 59

CATEGORY	A	B	C	D
RNP 0.15 DA		545/35	422 (500-5%)	
RNP 0.30 DA		592/45	469 (500-7%)	

AUTHORIZATION REQUIRED

SW-3, 11 JUN 2026 to 09 JUL 2026

SW-3, 11 JUN 2026 to 09 JUL 2026