

APP CRS	Rwy Ldg	11095
251°	TDZE	104
	Apt Elev	128


RNAV (RNP) Z RWY 25L

LOS ANGELES INTL (LAX)

RNP AR APCH.

▼ GPS required. For uncompensated Baro-VNAV systems, procedure NA below 5°C or above 54°C. Simultaneous approach authorized. Simultaneous approach authorized with HHR.

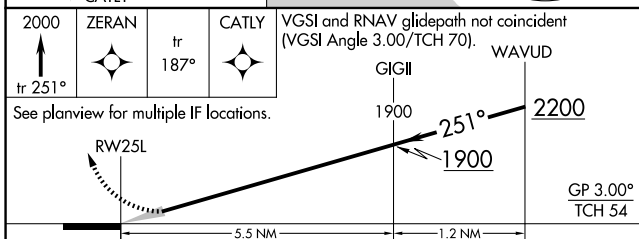
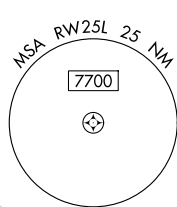
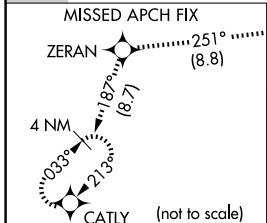
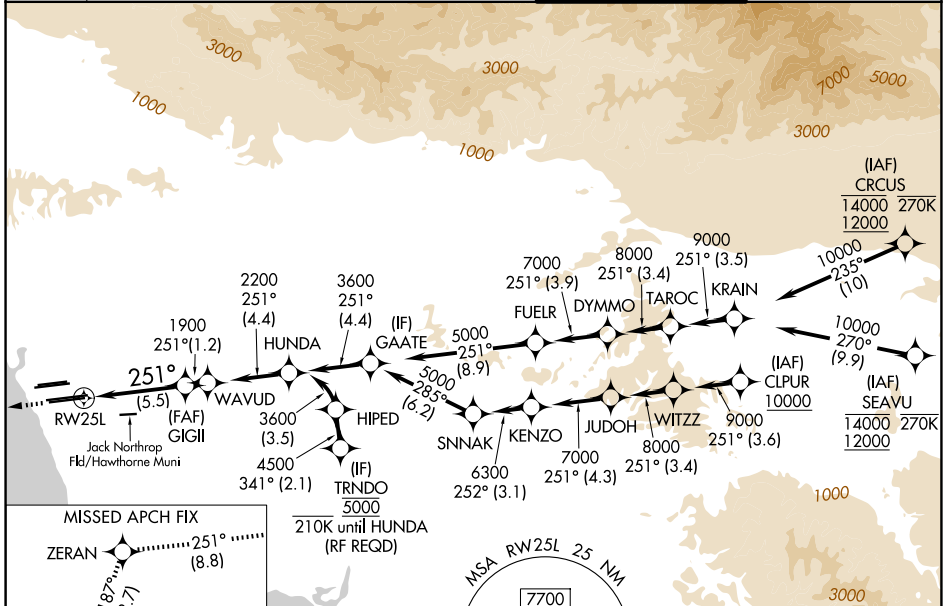
ALSF-2



MISSED APPROACH: Climb to 2000 on track 251° to ZERAN and on track 187° to CATLY and hold.

D-ATIS	SOCAL APP CON			
	124.3 363.2 (APCH from W)	124.9 269.0 (090°-224°)		
133.8	124.5 235.975 (225°-044°)	128.5 360.7 (045°-089°)		

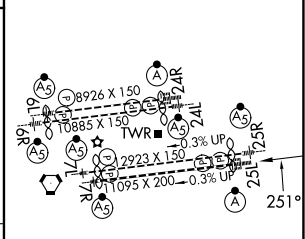
LOS ANGELES TOWER	133.9 239.3 (N)	GND CON
	120.95 379.1 (S)	121.65 327.0 (N)
		121.75 327.0 (S)
		121.4 327.0 (W)



CATEGORY	A	B	C	D
RNP 0.15 DA		445/30	341 (400- $\frac{5}{8}$)	
RNP 0.30 DA		543/50	439 (500-1)	

AUTHORIZATION REQUIRED

ELEV 128	D TDZE 104
----------	-------------------



SW-3, 11 JUN 2026 to 09 JUL 2026

SW-3, 11 JUN 2026 to 09 JUL 2026