

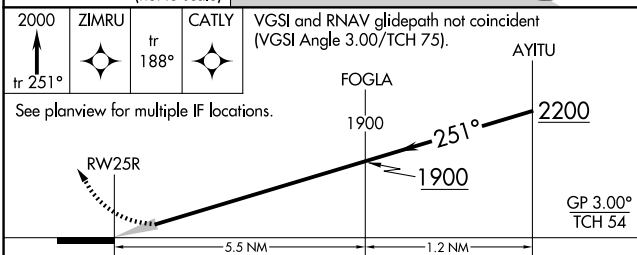
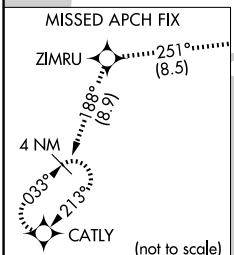
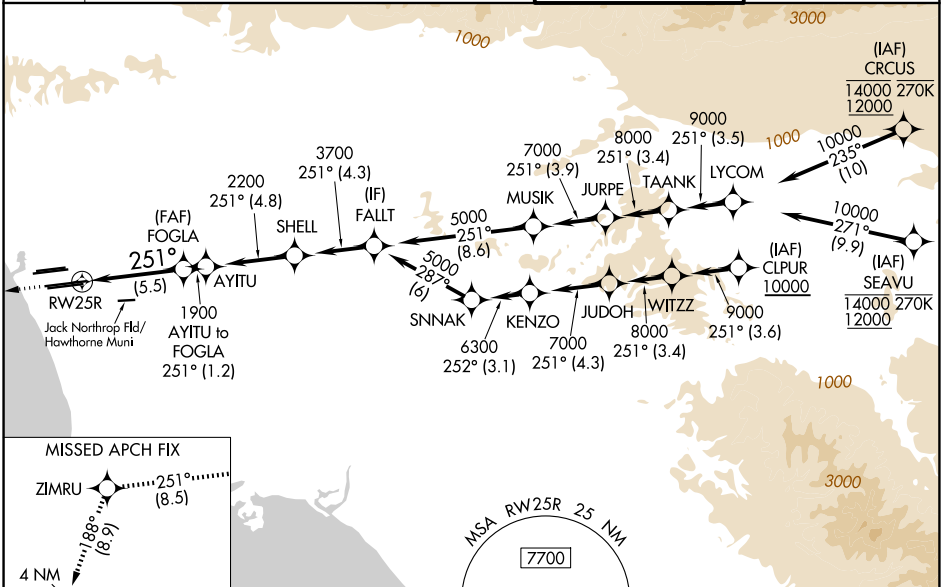
APP CRS	Rwy Ldg <b>11134</b>
<b>251°</b>	TDZE <b>104</b>
	Apt Elev <b>128</b>

# RNAV (RNP) Z RWY 25R

LOS ANGELES INTL (LAX)

<p>For uncompensated Baro-VNAV systems, procedure NA below 5°C (41°F) or above 54°C (130°F). Simultaneous approach authorized. Simultaneous approach authorized with HHR. GPS required. For inop ALS, increase RNP 0.11 all Cats visibility to RVR 6000.</p>	MALSR	MISSED APPROACH: Climb to 2000 on track 251° to ZIMRU and track 188° to CATLY and hold.

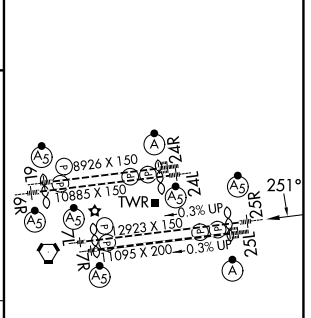
D-ATIS	SOCAL APP CON	LOS ANGELES TOWER	GND CON
<b>133.8</b>	<b>124.3 363.2</b> (APCH from W) <b>124.9 269.0</b> (090°-224°) <b>124.5 235.975</b> (225°-044°) <b>128.5 360.7</b> (045°-089°)	<b>133.9 239.3</b> (N) <b>120.95 379.1</b> (S)	<b>121.65 327.0</b> (N) <b>121.75 327.0</b> (S) <b>121.4 327.0</b> (W)



2000	ZIMRU	tr 188°	CATLY	VGSI and RNAV glidepath not coincident (VGSI Angle 3.00/TCH 75).
tr 251°				

CATEGORY	A	B	C	D
RNP 0.11 DA		453/40	349 (400-¾)	
RNP 0.30 DA		544/50	440 (500-1)	

ELEV 128	TDZE 104
----------	----------



## AUTHORIZATION REQUIRED

TDZ/CL Rwy's 6R, 7L, 24R, and 25L  
HIRL all Rwy's

SW-3, 11 JUN 2026 to 09 JUL 2026

SW-3, 11 JUN 2026 to 09 JUL 2026