


APP CRS	Rwy Ldg	8566
071°	TDZE	119
	Apt Elev	128


RNAV (RNP) Z RWY 6L

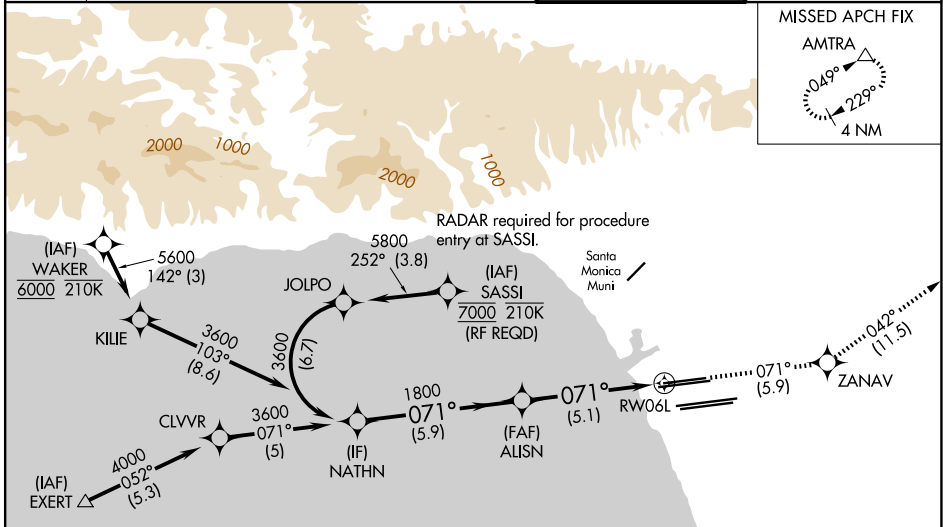
LOS ANGELES INTL (LAX)

▽ For uncompensated Baro-VNAV systems, procedure NA below 5°C (41°F) or above 54°C (130°F). Simultaneous approach authorized. GPS required. For inop MALSR, increase RNP 0.30 all Cats visibility to RVR 6000.

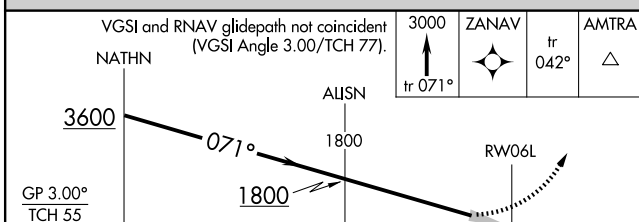
MALSR

MISSED APPROACH: Climb to 3000 on track 071° to ZANAV and on track 042° to AMTRA and hold.

D-ATIS	SOCAL APP CON		LOS ANGELES TOWER		GND CON	
133.8	124.3 363.2 (APCH from W)	124.9 269.0 (090°-224°)	133.9 239.3 (N)	121.65 327.0 (N)	121.75 327.0 (S)	121.4 327.0 (W)
	124.5 235.975 (225°-044°)	128.5 360.7 (045°-089°)	120.95 379.1 (S)			

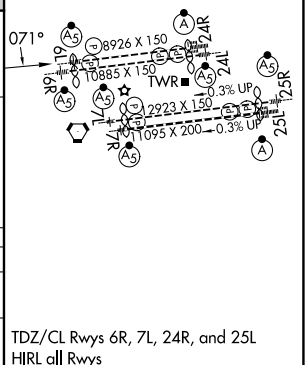
MISSED APCH FIX	
	



ELEV 128	D TDZE 119
----------	-------------------



CATEGORY	A	B	C	D
RNP 0.30 DA	484/40 365 (400-¾)			
AUTHORIZATION REQUIRED				



SW-3, 11 JUN 2026 to 09 JUL 2026

SW-3, 11 JUN 2026 to 09 JUL 2026

TDZ/CL Rwy 6R, 7L, 24R, and 25L
 HIRL all Rwy's