

APP CRS 071°	Rwy Ldg TDZE Apt Elev	9748 116 128
------------------------	-----------------------------	---

RNAV (RNP) Z RWY 6R

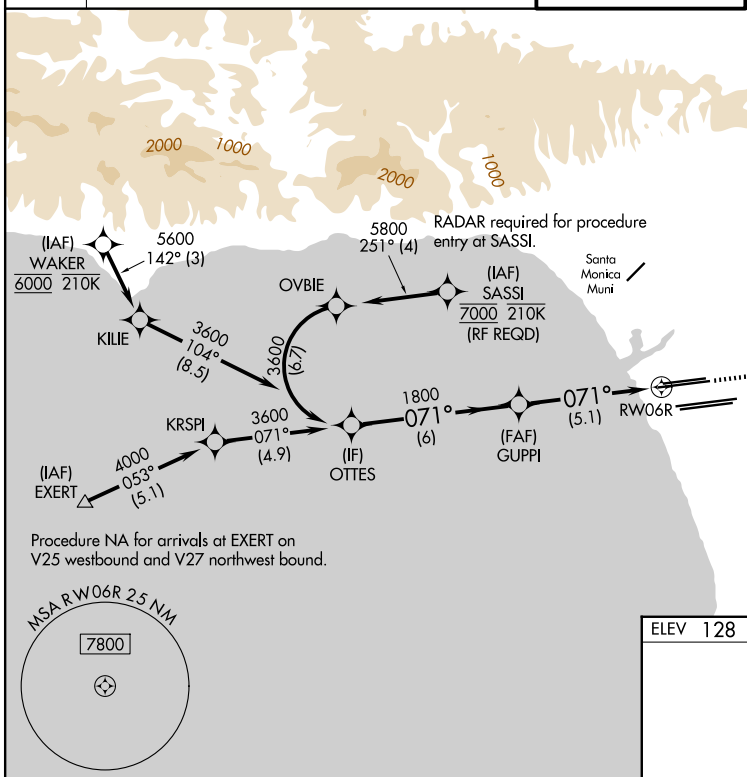
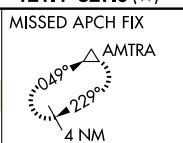
LOS ANGELES INTL (LAX)

For uncompensated Baro-VNAV systems, procedure NA below 5°C (41°F) or above 54°C (130°F). GPS required. Simultaneous approach authorized. For inop ALS, increase RNP 0.30 all Cats visibility to RVR 6000.



MISSED APPROACH: Climb to 3000 on track 071° to ZIMLO and on track 042° to AMTRA and hold.

D-ATIS 133.8	SOCAL APP CON		LOS ANGELES TOWER		GND CON
124.3 363.2 (APCH from W)	124.9 269.0 (090°-224°)	133.9 239.3 (N)	121.65 327.0 (N)	121.75 327.0 (S)	121.4 327.0 (W)
124.5 235.975 (225°-044°)	128.5 360.7 (045°-089°)	120.95 379.1 (S)			



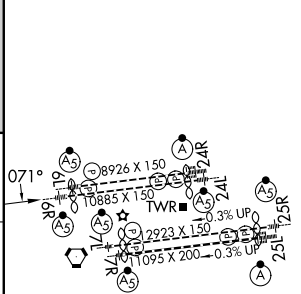
SW-3, 11 JUN 2026 to 09 JUL 2026

SW-3, 11 JUN 2026 to 09 JUL 2026



ELEV 128	D TDZE 116
----------	-------------------

VGSi and RNAV glidepath not coincident (VGSi Angle 3.00/TCH 69).			
OTTES	GUUPI	ZIMLO	AMTRA
3600	1800	tr 071°	tr 042°
GP 3.00° TCH 53	1800		
6 NM		5.1 NM	
CATEGORY	A	B	C
RNP 0.30	DA	471/40	355 (400-¾)
AUTHORIZATION REQUIRED			



TDZ/CL Rwy 6R, 7L, 24R, and 25L
HIRL all Rwy's