


APP CRS	Rwy Ldg	11259
071°	TDZE	128
	Apt Elev	128

RNAV (RNP) Z RWY 7L

LOS ANGELES INTL (LAX)

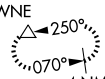
▽ For uncompensated Baro-VNAV systems, procedure NA below 5°C (41°F) or above 54°C (130°F). GPS required. Simultaneous approach authorized. For inop ALS, increase RNP 0.11 all Cats visibility to RVR 5000 and RNP 0.30 all Cats visibility to RVR 6000.

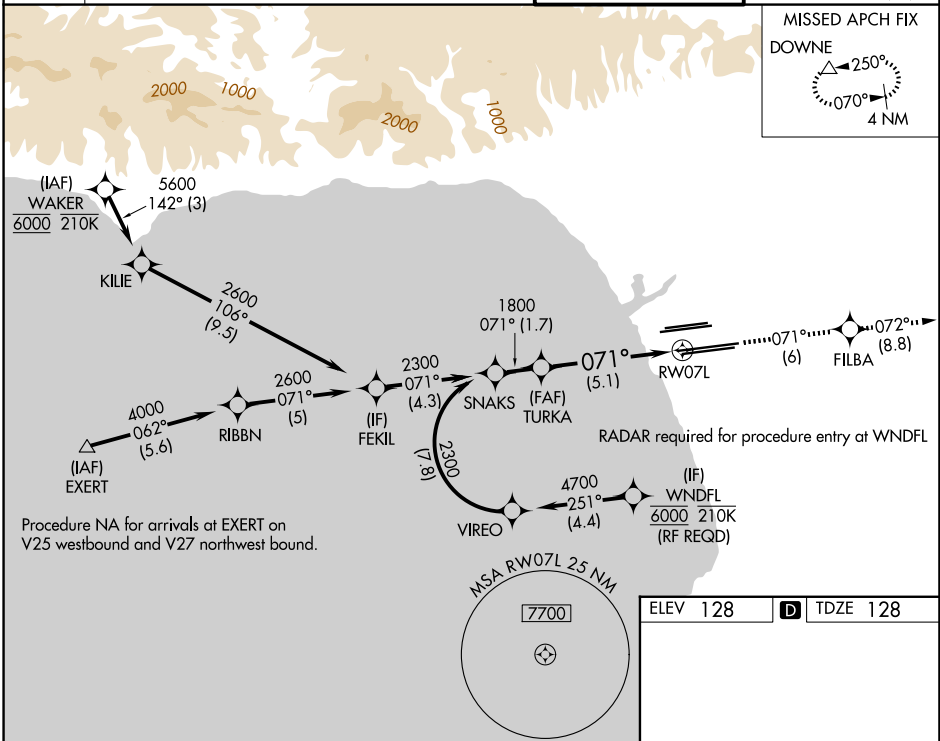
MALSR



MISSED APPROACH: Climb to 3000 on track 071° to FILBA and on track 072° to DOWNE and hold.

D-ATIS	SOCAL APP CON				LOS ANGELES TOWER	
133.8	124.3 363.2 (APCH from W)	124.9 269.0 (090°-224°)	128.5 360.7 (045°-089°)	133.9 239.3 (N)	120.95 379.1 (S)	GND CON
	124.5 235.975 (225°-044°)					121.65 327.0 (N)
						121.75 327.0 (S)
						121.4 327.0 (W)

MISSED APCH FIX	
DOWNE	
	250°
	070°
	4 NM



SW-3, 11 JUN 2026 to 09 JUL 2026

SW-3, 11 JUN 2026 to 09 JUL 2026

SNAKS	TURKA	RW07L		
2300	1800			
GP 3.00° TCH 59				
1.7 NM				
5.1 NM				
CATEGORY	A	B	C	D
RNP 0.11 DA		441/24	313 (400-½)	
RNP 0.30 DA		485/40	357 (400-¾)	
AUTHORIZATION REQUIRED				