

APP CRS 071°	Rwy Ldg 11095 TDZE 128 Apt Elev 128
------------------------	--

RNAV (RNP) Z RWY 7R

LOS ANGELES INTL (LAX)

▽ For uncompensated Baro-VNAV systems, procedure NA below 5°C (41°F) or above 54°C (130°F). For inop MALSR, increase RNP 0.11 all Cats visibility to RVR 4500. Simultaneous approach authorized.

MALSR

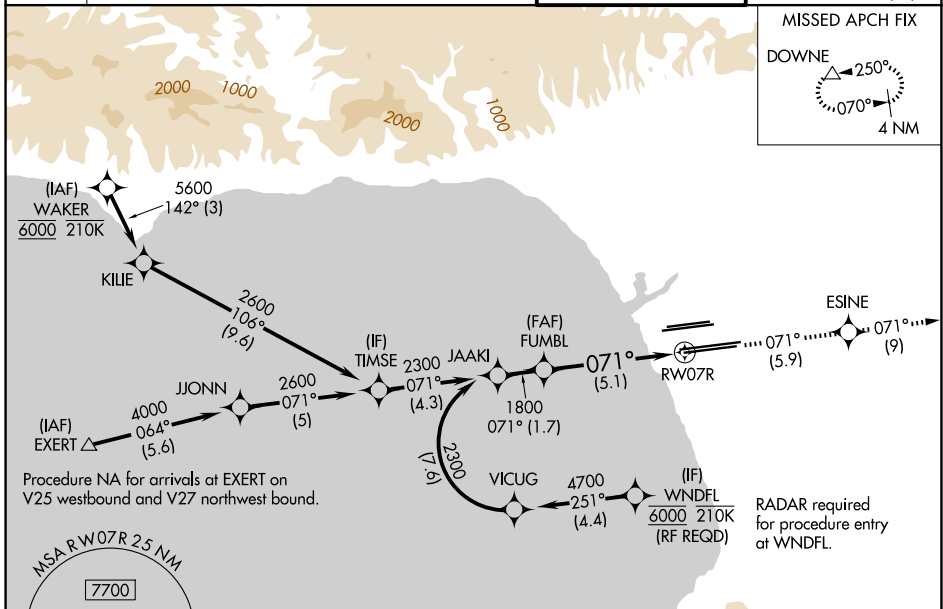


MISSED APPROACH: Climb to 3000 on track 071° to ESINE and on track 071° to DOWNE and hold.

D-ATIS 133.8	SOCAL APP CON 124.3 363.2 (APCH from W) 124.9 269.0 (090°-224°) 124.5 235.975 (225°-044°) 128.5 360.7 (045°-089°)
------------------------	---

LOS ANGELES TOWER 133.9 239.3 (N) 120.95 379.1 (S)
--

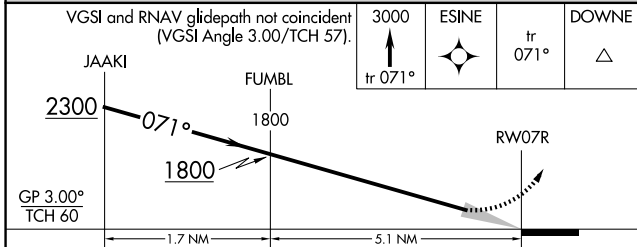
GND CON 121.65 327.0 (N) 121.75 327.0 (S) 121.4 327.0 (W)



SW-3, 11 JUN 2026 to 09 JUL 2026

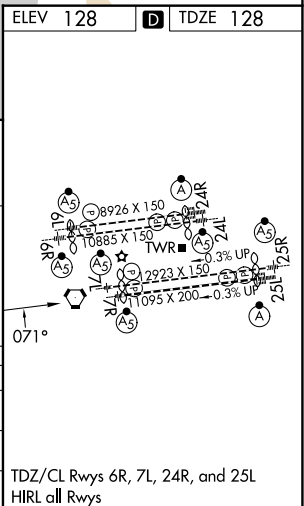
SW-3, 11 JUN 2026 to 09 JUL 2026

ELEV 128	D TDZE 128
----------	-------------------



CATEGORY	A	B	C	D
RNP 0.11 DA		414/24	286 (300-½)	
RNP 0.30 DA		538/45	410 (500-¾)	

AUTHORIZATION REQUIRED



TDZ/CL Rwy 6R, 7L, 24R, and 25L
HIRL all Rwy's