


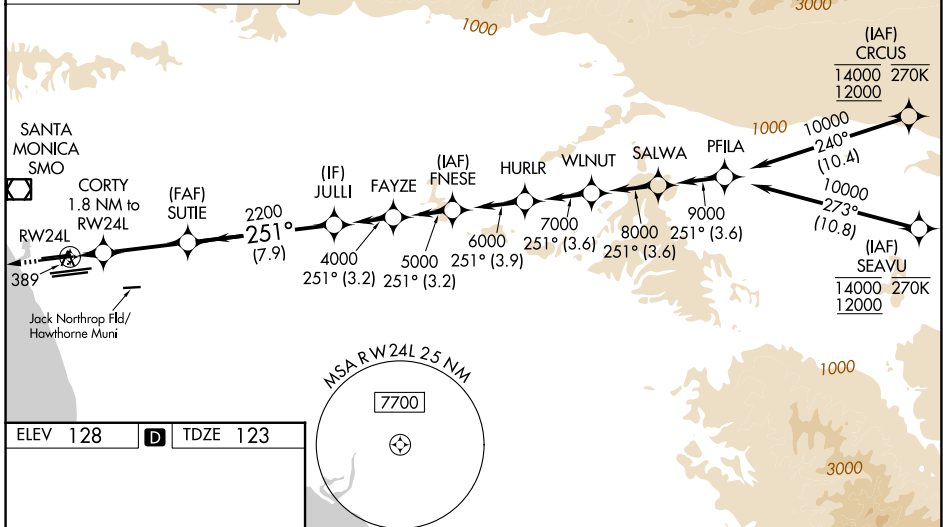
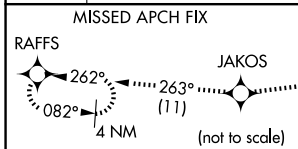
WAAS CH <b>56407</b> <b>W24B</b>	APP CRS <b>251°</b>	Rwy Ldg TDZE Apt Elev	<b>9483</b> <b>123</b> <b>128</b>
--	------------------------	-----------------------------	---

# RNAV (GPS) Y RWY 24L

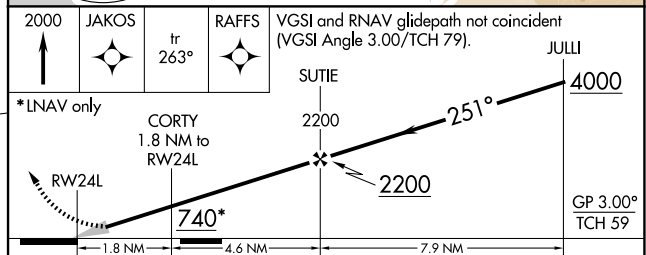
LOS ANGELES INTL (LAX)

RNP APCH.	<p>Simultaneous approach authorized. LNAV procedure NA during simultaneous operations. Use of FD or AP providing RNAV track guidance required during simultaneous operations. Simultaneous approach authorized with HHR. For uncompensated Baro-VNAV systems, LNAV/VNAV NA below 5°C or above 54°C. For inop ALS, increase LNAV/VNAV all Cats visibility to 1½ SM. #RVR 1800 authorized with use of FD or AP or HUD to DA.</p>	<p>MALSR</p> 	<p>MISSED APPROACH: Climb to 2000 direct JAKOS and on track 263° to RAFFS and hold.</p>
-----------	--	--	---

D-ATIS <b>133.8</b>	<p>SOCAL APP CON</p> <p><b>124.3 363.2</b> (APCH from W) <b>124.9 269.0</b> (090°-224°) <b>124.5 235.975</b> (225°-044°) <b>128.5 360.7</b> (045°-089°)</p>	<p>LOS ANGELES TOWER</p> <p><b>133.9 239.3</b> (N) <b>120.95 379.1</b> (S)</p>	<p>GND CON</p> <p><b>121.65 327.0</b> (N) <b>121.75 327.0</b> (S) <b>121.4 327.0</b> (W)</p>
------------------------	---	--	--



ELEV 128	<b>D</b>	TDZE 123
<p>TDZ/CL Rwy's 6R, 7L, 24R, and 25L HIRL all Rwy's</p>		



CATEGORY	A	B	C	D
LPV DA#		323/24	200 (200-½)	
LNAV/VNAV DA		608/50	485 (500-1)	
LNAV MDA	660/24	537 (600-½)	660/55	537 (600-1)

SW-3, 11 JUN 2026 to 09 JUL 2026

SW-3, 11 JUN 2026 to 09 JUL 2026