

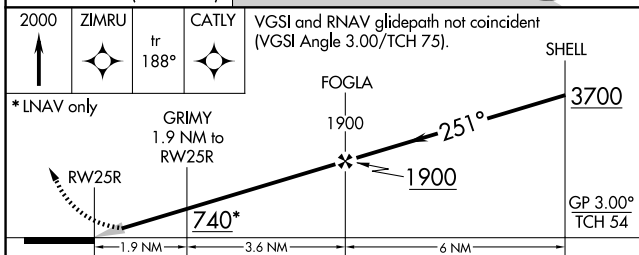
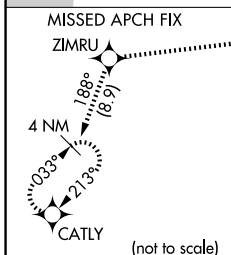
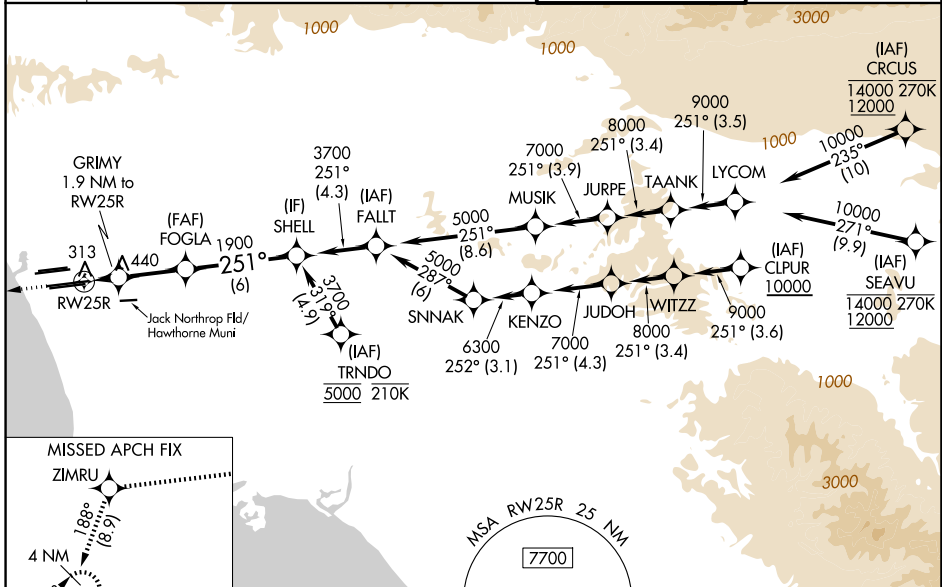
WAAS CH <b>49007</b> <b>W25B</b>	APP CRS <b>251°</b>	Rwy Ldg <b>11134</b> TDZE <b>104</b> Apt Elev <b>128</b>
--	------------------------	--

# RNAV (GPS) Y RWY 25R

LOS ANGELES INTL (LAX)

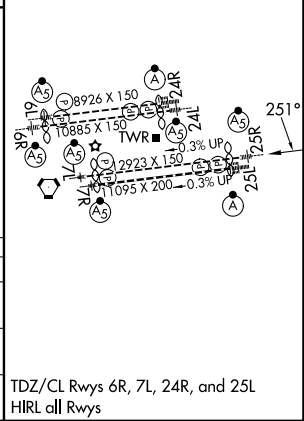
RNP APCH. ▼ For uncompensated Baro-VNAV systems, LNAV/VNAV NA below 5°C or above 54°C. Simultaneous approach authorized. Simultaneous approach authorized with HHR. LNAV procedure NA during simultaneous operations. Use of FD or AP required during simultaneous operations. #RVR 1800 authorized with use of FD or AP or HUD to DA.	MALSR 	MISSED APPROACH: Climb to 2000 direct ZIMRU and track 188° to CATLY and hold.
---	-----------	--

D-ATIS <b>133.8</b>	SOCAL APP CON <b>124.3 363.2</b> (APCH from W) <b>124.9 269.0</b> (090°-224°) <b>124.5 235.975</b> (225°-044°) <b>128.5 360.7</b> (045°-089°)	LOS ANGELES TOWER <b>133.9 239.3</b> (N) <b>120.95 379.1</b> (S)	GND CON <b>121.65 327.0</b> (N) <b>121.75 327.0</b> (S) <b>121.4 327.0</b> (W)
------------------------	---	--	---



CATEGORY	A	B	C	D
LPV DA#		304/24	200 (200-1/2)	
LNAV/VNAV DA		578/60	474 (500-1/4)	
LNAV MDA	640/24	536 (600-1/2)	640/55	536 (600-1)

ELEV 128	TDZE 104
----------	----------



SW-3, 11 JUN 2026 to 09 JUL 2026

SW-3, 11 JUN 2026 to 09 JUL 2026