

WAAS CH <b>61207</b> <b>W06B</b>	APP CRS <b>071°</b>	Rwy Ldg <b>9748</b> TDZE <b>116</b> Apt Elev <b>128</b>
--	------------------------	---

# RNAV (GPS) Y RWY 6R

LOS ANGELES INTL (LAX)

▼ For uncompensated Baro-VNAV systems, LNAV/VNAV NA below 5°C (41°F) or above 54°C (130°F). DME/DME RNP-0.3 NA. For inop ALS, increase LNAV/VNAV all Cats visibility to RVR 4500, LNAV Cat C and D visibility to RVR 5500. Simultaneous approach authorized. LNAV procedure NA during simultaneous operations. Use of FD or AP providing RNAV track guidance required during simultaneous operations. # RVR 1800 authorized with use of FD or AP or HUD to DA.

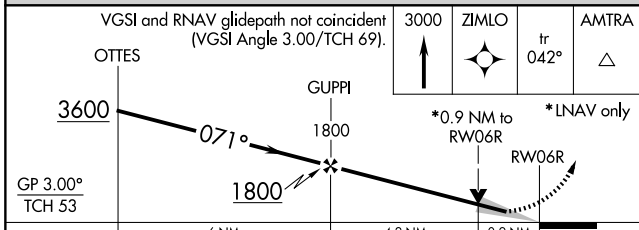
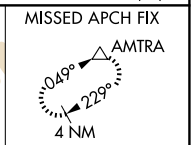
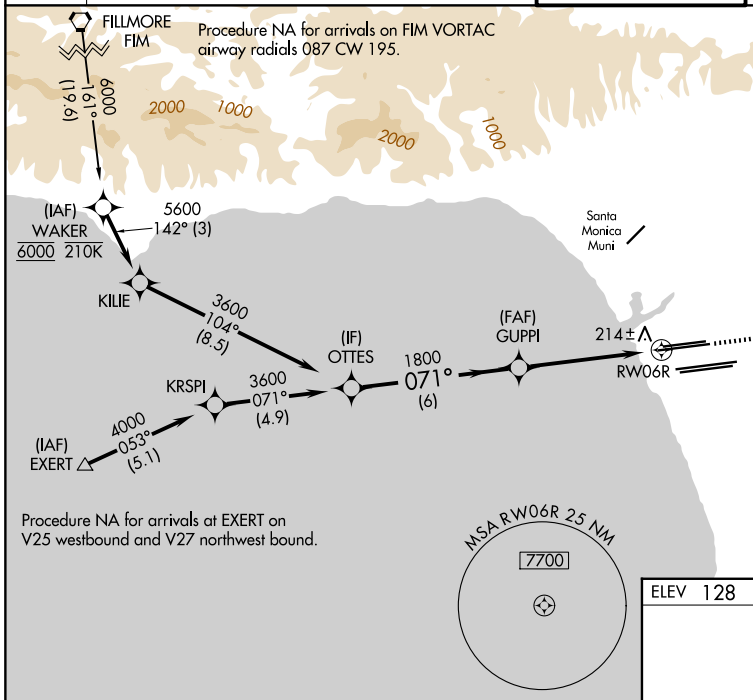
MALS



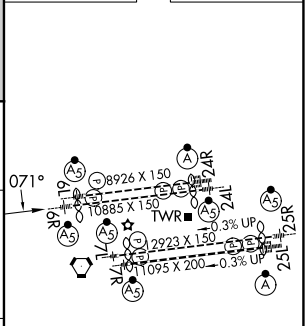
MISSED APPROACH:  
Climb to 3000 direct ZIMLO and track 042° to AMTRA and hold.

D-ATIS <b>133.8</b>	SOCAL APP CON		LOS ANGELES TOWER <b>133.9 239.3 (N)</b> <b>120.95 379.1 (S)</b>
	<b>124.3 363.2</b> (APCH from W)	<b>124.9 269.0</b> (090°-224°)	
	<b>124.5 235.975</b> (225°-044°)	<b>128.5 360.7</b> (045°-089°)	

GND CON	
<b>121.65 327.0 (N)</b>	<b>121.75 327.0 (S)</b>
<b>121.4 327.0 (W)</b>	



ELEV 128	<b>D</b> TDZE 116
----------	-------------------



CATEGORY	A	B	C	D
LPV DA#		316/24	200 (200-½)	
LNAV/VNAV DA		398/24	282 (300-½)	
LNAV MDA	480/24	364 (400-½)	480/35	364 (400-¾)

TDZ/CL Rwy 6R, 7L, 24R, and 25L  
HIRL all Rwy

SW-3, 11 JUN 2026 to 09 JUL 2026

SW-3, 11 JUN 2026 to 09 JUL 2026