

(SKWRL2.SKWRL) 25331

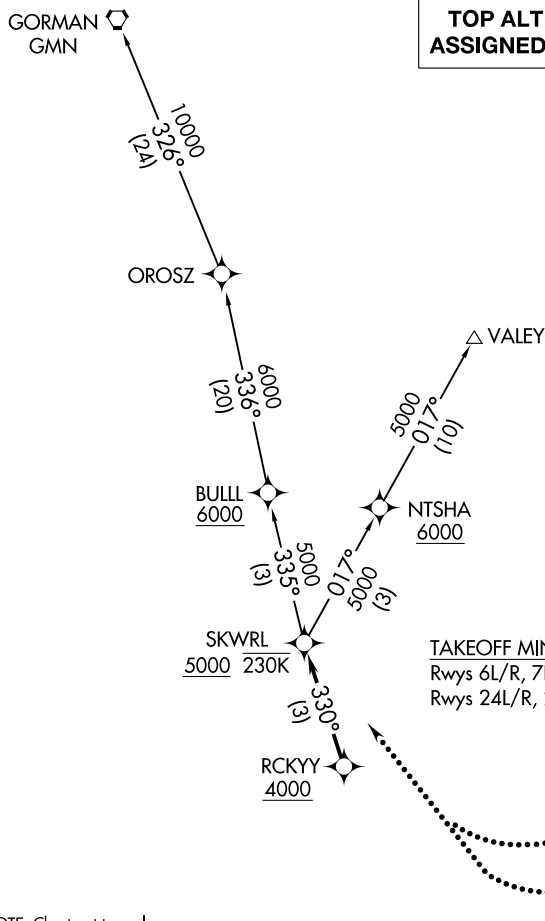
SKWRL TWO DEPARTURE (RNAV)

AL-237 (FAA)

LOS ANGELES INTL (LAX)
LOS ANGELES, CALIFORNIA

**TOP ALTITUDE:
ASSIGNED BY ATC**

SOCAL DEP CON
125.2 323.275
D-ATIS DEP
135.65
CLNC DEL
120.35 327.0
CPDLC
GND CON
(N) 121.65 327.0
(S) 121.75 327.0
(W) 121.4 327.0
LOS ANGELES TOWER
(N) 133.9 239.3
(S) 120.95 379.1

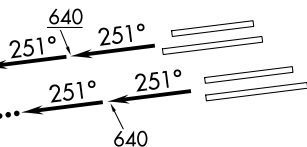


NOTE: DME/DME/IRU or GPS required.
 NOTE: RADAR required.
 NOTE: RNAV 1.
 NOTE: Turboprop aircraft only.

TAKEOFF MINIMUMS

Rwys 6L/R, 7L/R: NA-ATC.

Rwys 24L/R, 25L/R: Standard with minimum climb of 500' per NM to 640.



NOTE: Chart not to scale.

DEPARTURE ROUTE DESCRIPTION

TAKEOFF RUNWAYS 24L/R, 25 L/R: Climb heading 251° to 640, then on heading 251° or as assigned by ATC, expect vectors to cross RCKYY at or above 4000, then on track 330° to cross SKWRL at or above 5000, thence. . . .

. . . .on (transition). Maintain ATC assigned altitude. Expect filed altitude five minutes after departure.

LOST COMMUNICATIONS: If not in contact with departure control within five minutes after departure, turn right and proceed direct SKWRL WP, climb to 7000 or filed altitude whichever is lower, and when able proceed direct filed or assigned route/fix/transition. Aircraft filing 8000 or above, climb to filed altitude ten minutes after departure.

GORMAN TRANSITION (SKWRL2.GMN)

VALEY TRANSITION (SKWRL2.VALEY)

SKWRL TWO DEPARTURE (RNAV)

(SKWRL2.SKWRL) 17AUG17

LOS ANGELES, CALIFORNIA
LOS ANGELES INTL (LAX)

SW-3, 11 JUN 2026 to 09 JUL 2026

SW-3, 11 JUN 2026 to 09 JUL 2026