

# VISTA THREE ARRIVAL

AL-237 (FAA)

LOS ANGELES INTL (LAX)  
LOS ANGELES, CALIFORNIA

9202 2002 60 01 9202 2002 11 '8-MS

## ARRIVAL ROUTE DESCRIPTION

**JULIAN TRANSITION (JLI.VISTA3):** From over JLI VORTAC on JLI R-263 and OCN R-083 to VISTA. Thence, . . . .

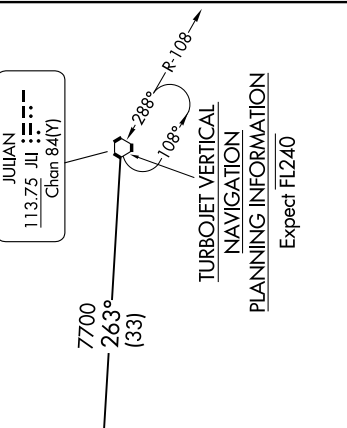
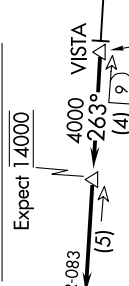
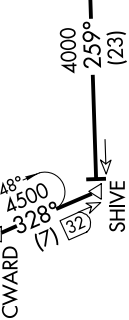
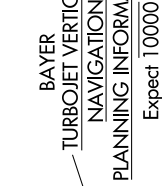
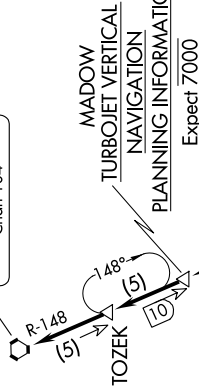
. . . . from VISTA to CYNDE on OCN R-083. From CYNDE to OCN VORTAC on OCN R-083. From OCN VORTAC to SHIVE on OCN R-259 and SJI R-148. From SHIVE to CWARD on SJI R-148. From CWARD to BAYER on SJI R-148. From BAYER to MADOW on SJI R-148. From MADOW to TOZEK on SJI R-148. From TOZEK to SJI VORTAC on SJI R-148. Expect RADAR vectors to final approach course for Runways 24 or 25.



SOCAL APP CON  
128.1 281.4  
D-ATIS ARR  
133.8



SEAL BEACH  
115.7 SJI  
Chan 104



NOTE: DME and RADAR required.  
NOTE: Chart not to scale.

# VISTA THREE ARRIVAL

LOS ANGELES, CALIFORNIA  
LOS ANGELES INTL (LAX)

SW-3, 11 JUN 2026 to 09 JUL 2026