

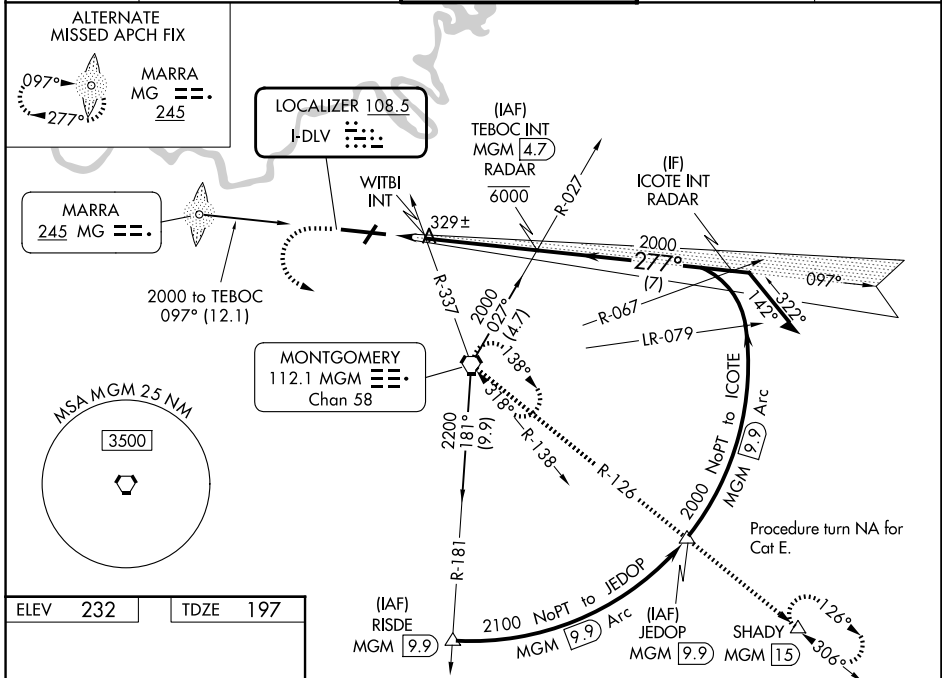
LOC I-DLV	APP CRS	Rwy Ldg	9020
108.5	277°	TDZE	197
		Apt Elev	232

ILS Y or LOC RWY 28

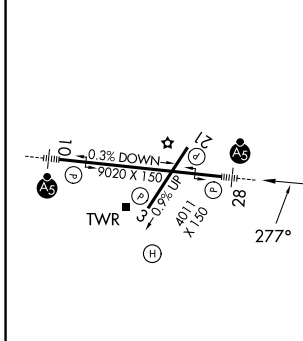
MONTGOMERY RGNL (DANNELLY FLD) (MGM)

	For inop ALS, increase S-ILS 28 Cat E visibility to ½ SM; S-LOC 28 Cat C/D/E visibility to 1 ¾ SM and increase WITBI fix minimums S-LOC 28 Cat E visibility to 1 ½ SM. Circling for Cat E NA north of Rwy 10-28.	MALSR 	MISSED APPROACH: Climb to 700 then climbing left turn to 3000 direct MGM VORTAC and hold, continue climb-in-hold to 3000 (TACAN aircraft continue climb to 3500 on MGM VORTAC R-126 to SHADY/MGM 15 DME and hold SE, RT, 306° inbound).

ATIS 120.675	MONTGOMERY APP CON* 124.0 363.025	DANNELLY TOWER* 119.7 (CTAF) 360.85	GND CON 121.7 348.6	UNICOM 122.95
------------------------	---	---	-------------------------------	-------------------------



ELEV 232	TDZE 197
----------	----------



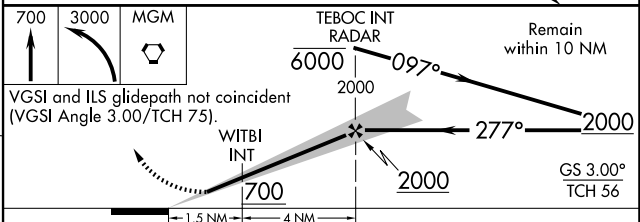
REIL Rwy 3

MIRL Rwy 3-21

HIRL Rwy 10-28

FAF to MAP 5.5 NM

Knots	60	90	120	150	180
Min:Sec	5:30	3:40	2:45	2:12	1:50



CATEGORY	A	B	C	D	E
S-ILS 28	397-1/2 200 (200-1/2)				
S-LOC 28	700-1/2	503 (500-1/2)	700-1 503 (500-1)		
CIRCLING	700-1	468 (500-1)	800-1/2 568 (600-1/2)	860-2 628 (700-2)	860-2 1/4 628 (700-2 1/4)
WITBI FIX MINIMUMS (DUAL VOR RECEIVERS REQUIRED)					
S-LOC 28	620-1/2	423 (400-1/2)	620-3/4	423 (400-3/4)	
CIRCLING	700-1	468 (500-1)	800-1/2 568 (600-1/2)	860-2 628 (700-2)	860-2 1/4 628 (700-2 1/4)

SE-4, 11 JUN 2026 to 09 JUL 2026

SE-4, 11 JUN 2026 to 09 JUL 2026