


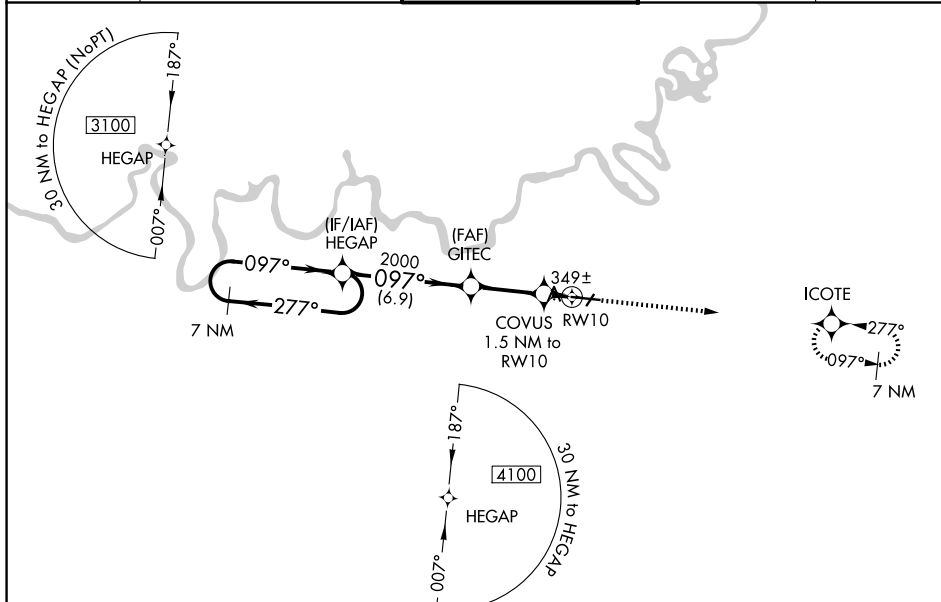
WAAS CH 50100 W10A	APP CRS 097°	Rwy Ldg TDZE Apt Elev	9020 219 232
--	------------------------	-----------------------------	---

RNAV (GPS) RWY 10

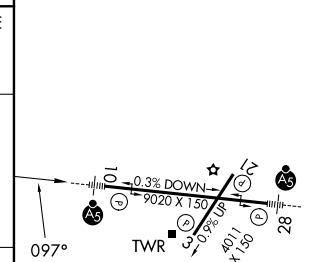
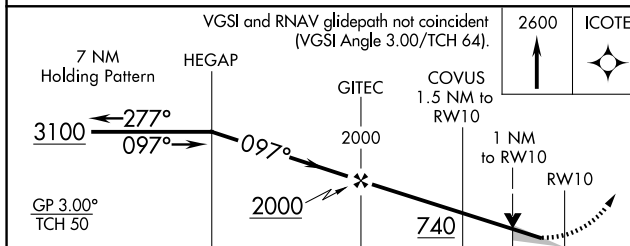
MONTGOMERY RGNL (DANNELLY FLD) (MGM)

RNP APCH-GPS		<p>For uncompensated Baro-VNAV systems, LNAV/VNAV NA below -8°C or above 54°C. For inop MALSR, increase LPV Cat E visibility to RVR 4000; increase LNAV/VNAV Cat E visibility to RVR 5000; increase LNAV Cats C/D/E visibility to 1½ mile. Circling for Cat E NA north of Rwy 10-28. **RVR 1800 authorized with use of FD or AP or HUD to DA.</p>		<p>MALSR</p> 	<p>MISSED APPROACH: Climb to 2600 direct ICOTE and hold.</p>
--------------	--	---	--	--	--

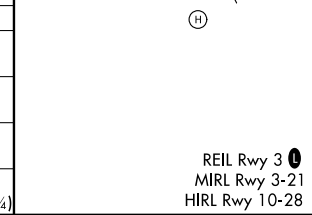
ATIS 120.675	MONTGOMERY APP CON* 124.0 363.025	DANNELLY TOWER* 119.7 (CTAF) 360.85	GND CON 121.7 348.6	UNICOM 122.95
------------------------	---	---	-------------------------------	-------------------------



ELEV	232	TDZE	219
------	-----	------	-----



CATEGORY	A	B	C	D	E
LPV DA **	419/24 200 (200-½)				
LNAV/VNAV DA	530/24 311 (300-½)				
LNAV MDA	600/24	381 (400-½)	600/35	381 (400-¾)	
CIRCLING	700-1	468 (500-1)	800-1½ 568 (600-1½)	860-2 628 (700-2)	860-2¼ 628 (700-2¼)



SE-4, 11 JUN 2026 to 09 JUL 2026

SE-4, 11 JUN 2026 to 09 JUL 2026