
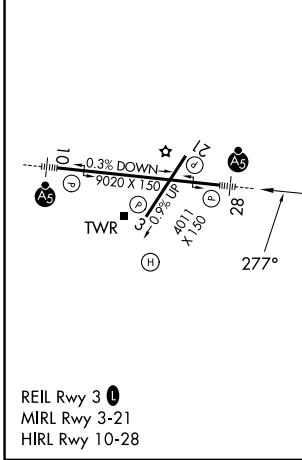
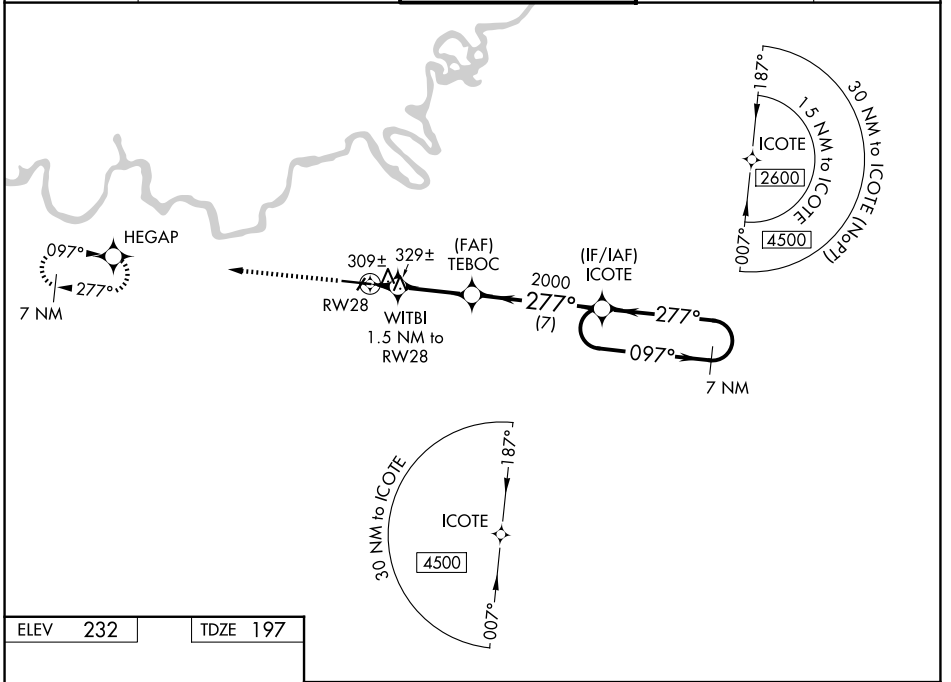


WAAS CH <b>56200</b> <b>W28A</b>	APP CRS <b>277°</b>	Rwy Ldg TDZE Apt Elev	<b>9020</b> <b>197</b> <b>232</b>
--	------------------------	-----------------------------	---

# RNAV (GPS) RWY 28

MONTGOMERY RGNL (DANNELLY FLD) (MGM)

RNP APCH-GPS. ▼ For uncompensated Baro-VNAV systems, LNAV/VNAV NA below -8°C or above 54°C. ▲ For inop MALS, increase LPV Cat E visibility to 3/4 mile; increase LNAV/VNAV Cat E visibility to 1 3/8 mile; increase LNAV Cat E visibility to 1 1/8 mile. Circling for Cat E NA north of Rwy 10-28.		MALS 	MISSED APPROACH: Climb to 3100 direct HEGAP and hold.	
ATIS <b>120.675</b>	MONTGOMERY APP CON* <b>124.0 363.025</b>	DANNELLY TOWER* <b>119.7 (CTAF) 360.85</b>	GND CON <b>121.7 348.6</b>	UNICOM <b>122.95</b>



3100	HEGAP	VGSI and RNAV glidepath not coincident (VGSI Angle 3.00/TCH 75).		7 NM Holding Pattern	
	WITBI	TEBOC	ICOTE		
	1.5 NM to RWY 28	2000	277°	097° → 2600	
	1 NM to RWY 28	720	2000	← 277°	
	1 NM	0.5	4 NM	7 NM	
CATEGORY	A	B	C	D	E
LPV DA	397-1/2		200 (200-1/2)		
LNAV/VNAV DA	606-7/8		409 (400-7/8)		
LNAV MDA	580-1/2	383 (400-1/2)	580-5/8		383 (400-5/8)
CIRCLING	700-1	468 (500-1)	800-1/2 568 (600-1/2)	860-2 628 (700-2)	860-2 1/4 628 (700-2 1/4)

GP 3.00°  
TCH 56

SE-4, 11 JUN 2026 to 09 JUL 2026

SE-4, 11 JUN 2026 to 09 JUL 2026