

# HI-TACAN Y RWY 25

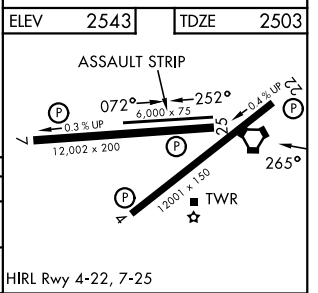
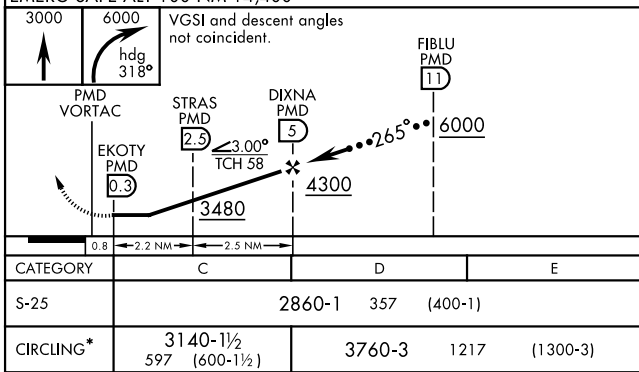
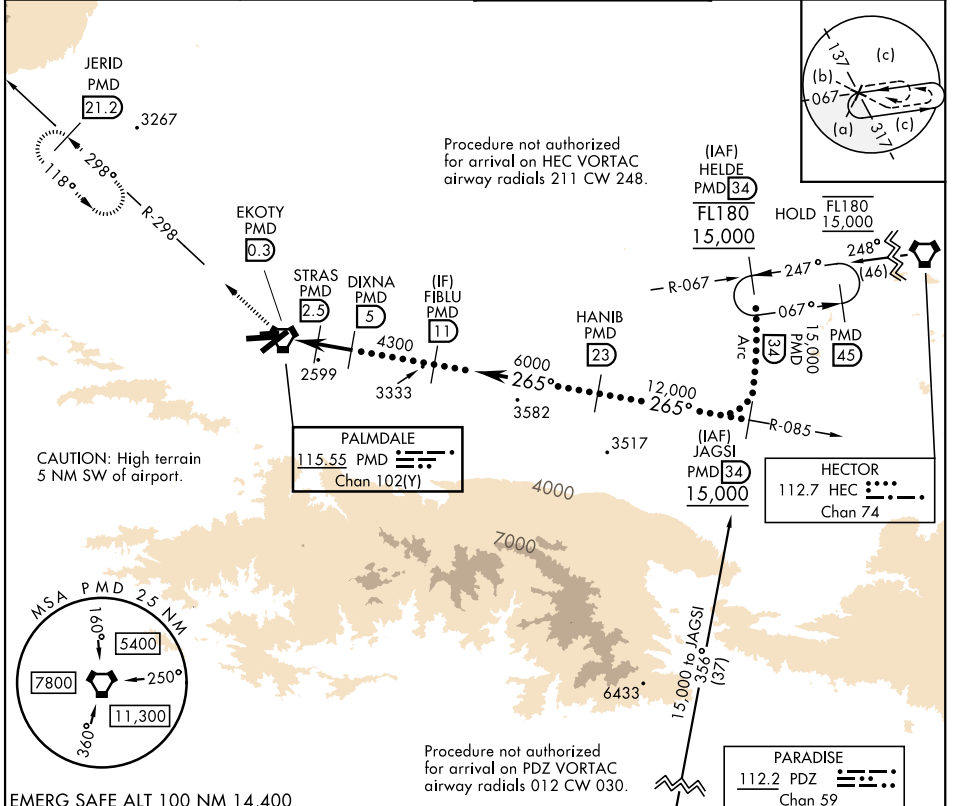
TACAN PMD Chan <b>102(Y)</b>	APCH CRS <b>265°</b>	Rwy Idg <b>12,002</b> TDZE <b>2503</b> Arprt Elev <b>2543</b>
---------------------------------	-------------------------	---

[USAF]

PALMDALE USAF PLANT 42 (KPMDF)

**∇** \* Circling not authorized S of Rwy 4 and 25.  
**▲** MISSED APPROACH: Climb to 3000 then climbing right turn to 6000 on heading 318° and on PMD VORTAC R-298 to JERID INT/PMD 21.2 DME and hold.

ATIS <b>118.275</b>	JOSHUA APP CON <b>124.55 363.0</b>	TOWER★ <b>123.7 (CTAF) 317.6</b>	GND CON <b>121.9 317.6</b>
------------------------	---------------------------------------	-------------------------------------	-------------------------------



# HI-TACAN Y RWY 25

SW-3, 11 JUN 2026 to 09 JUL 2026

SW-3, 11 JUN 2026 to 09 JUL 2026