

WAAS CH <b>82712</b> <b>W11A</b>	APP CRS <b>112°</b>	Rwy Ldg <b>4808</b> TDZE <b>1487</b> Apt Elev <b>1497</b>
--	------------------------	---

# RNAV (GPS) RWY 11

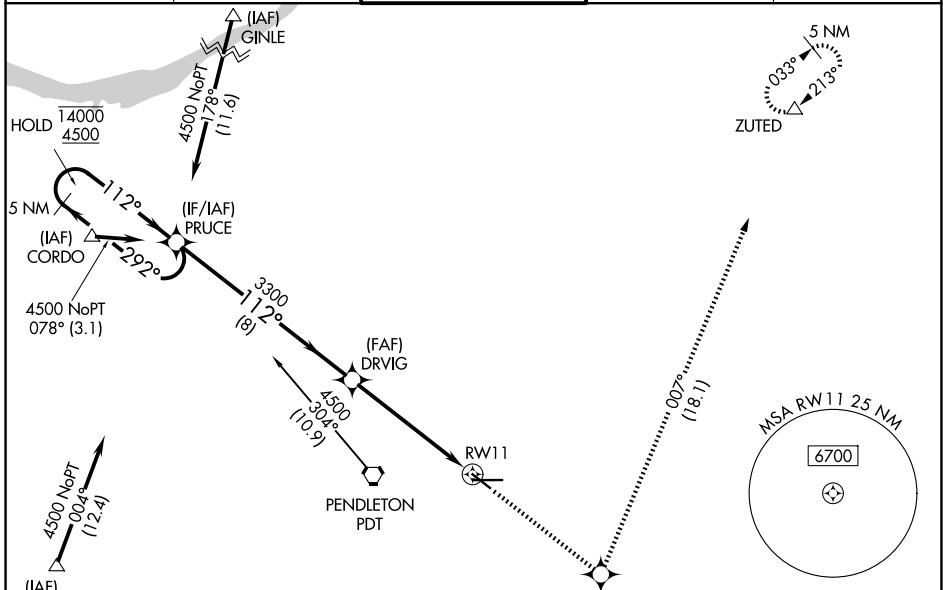
EASTERN OREGON RGNL AT PENDLETON (PDT)

**RNP APCH.**

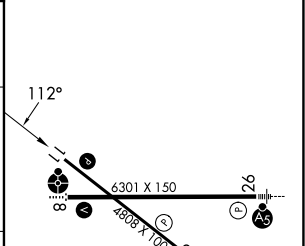
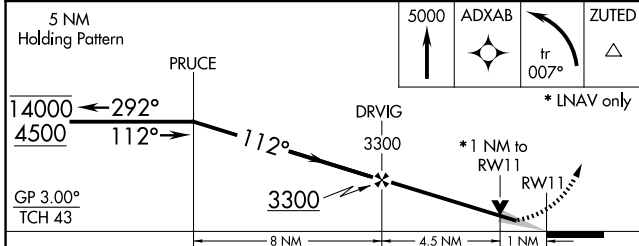
**Baro-VNAV and VDP NA when using Walla Walla altimeter setting. For uncompensated Baro-VNAV systems, LNAV/VNAV NA below -17°C or above 54°C. When local altimeter setting not received, use Walla Walla altimeter setting and increase all DA/MDA 120 feet; VNAV all Cats visibility 1/8 SM, LNAV Cat C visibility 3/8 SM, and Cat D visibility 1/8 SM, Circling Cat C visibility 1/4 SM and Circling Cat D visibility 1/2 SM.**

**MISSED APPROACH:** Climb to 5000 direct ADXAB and on track 007° to ZUTED and hold.

ASOS <b>118.325</b>	SPOKANE APP CON * <b>133.15 379.15</b>	PENDLETON TOWER * <b>119.7 (CTAF) 257.8</b>	GND CON <b>121.9 257.8</b>	UNICOM <b>122.95</b>
------------------------	---	--	-------------------------------	-------------------------



ELEV 1497	<b>D</b>	TDZE 1487
-----------	----------	-----------



CATEGORY	A	B	C	D
LPV DA	1737-1 250 (300-1)			
LNAV/VNAV DA	1850-1¼ 363 (400-1¼)			
LNAV MDA	1860-1 373 (400-1)		1860-1¼ 373 (400-1¼)	
CIRCLING	1920-1 423 (500-1)	1960-1 463 (500-1)	1980-1½ 483 (500-1½)	2200-2¼ 703 (800-2¼)

REIL Rwy 11 and 29 **L**

MIRL Rwy 11-29 **L**

HIRL Rwy 8-26 **L**

NW-1, 11 JUN 2026 to 09 JUL 2026

NW-1, 11 JUN 2026 to 09 JUL 2026