


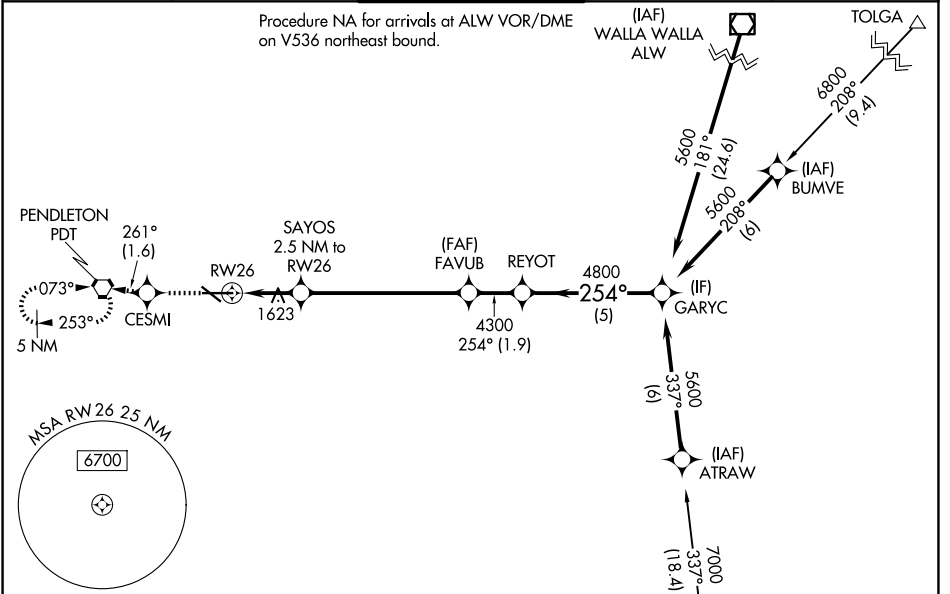
WAAS CH <b>78412</b> W26A	APP CRS <b>254°</b>	Rwy Ldg TDZE Apt Elev	<b>6301</b> <b>1487</b> <b>1497</b>
---------------------------------	------------------------	-----------------------------	---

# RNAV (GPS) RWY 26

EASTERN OREGON RGNL AT PENDLETON (PDT)

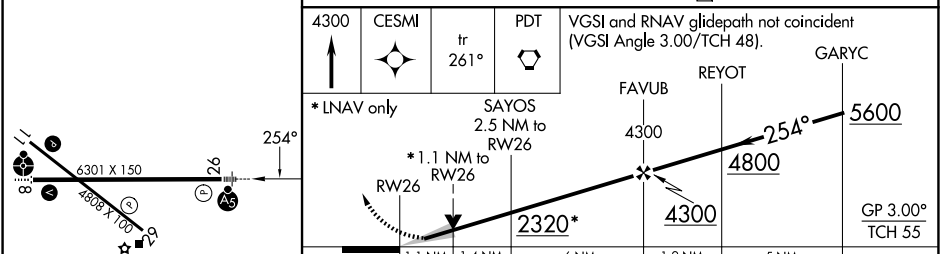
<p>RNP APCH.</p> <p><b>⚠</b> Circling Rwy 11 NA at night. For uncompensated Baro-VNAV systems, LNAV/VNAV NA below -17°C or above 54°C. For inop ALS, increase LNAV/VNAV all Cats visibility to RVR 4500. #RVR 1800 authorized with the use of FD or AP or HUD to DA.</p>	<p>MALSR</p> 	<p>MISSED APPROACH: Climb to 4300 direct CESMI and on track 261° to PDT VORTAC and hold, continue climb-in-hold to 4300.</p>
--	--	--

ASOS <b>118.325</b>	SPOKANE APP CON * <b>133.15 379.15</b>	PENDLETON TOWER * <b>119.7 (CTAF) 257.8</b>	GND CON <b>121.9 257.8</b>	UNICOM <b>122.95</b>
------------------------	---	--	-------------------------------	-------------------------



ELEV <b>1497</b>	<b>D</b>	TDZE <b>1487</b>
------------------	----------	------------------

Procedure NA for arrivals at LACED on V4 southeast bound.



REIL Rwy 11 and 29 <b>Ⓛ</b>	MIRL Rwy 11-29 <b>Ⓛ</b>	HIRL Rwy 8-26 <b>Ⓛ</b>																									
<table border="1" style="width: 100%;"> <tr> <th>CATEGORY</th> <th>A</th> <th>B</th> <th>C</th> <th>D</th> </tr> <tr> <td>LPV DA#</td> <td colspan="4">1687/24 200 (200-½)</td> </tr> <tr> <td>LNAV/VNAV DA</td> <td colspan="4">1800/24 313 (400-½)</td> </tr> <tr> <td>LNAV MDA</td> <td>1880/24 393 (400-½)</td> <td colspan="2">1880/40 393 (400-¾)</td> <td></td> </tr> <tr> <td>CIRCLING</td> <td>1920-1 423 (500-1)</td> <td>1960-1 463 (500-1)</td> <td>1980-1½ 483 (500-1½)</td> <td>2200-2¼ 703 (800-2¼)</td> </tr> </table>			CATEGORY	A	B	C	D	LPV DA#	1687/24 200 (200-½)				LNAV/VNAV DA	1800/24 313 (400-½)				LNAV MDA	1880/24 393 (400-½)	1880/40 393 (400-¾)			CIRCLING	1920-1 423 (500-1)	1960-1 463 (500-1)	1980-1½ 483 (500-1½)	2200-2¼ 703 (800-2¼)
CATEGORY	A	B	C	D																							
LPV DA#	1687/24 200 (200-½)																										
LNAV/VNAV DA	1800/24 313 (400-½)																										
LNAV MDA	1880/24 393 (400-½)	1880/40 393 (400-¾)																									
CIRCLING	1920-1 423 (500-1)	1960-1 463 (500-1)	1980-1½ 483 (500-1½)	2200-2¼ 703 (800-2¼)																							

NW-1, 11 JUN 2026 to 09 JUL 2026

NW-1, 11 JUN 2026 to 09 JUL 2026